

This certificate is valid for Building Regulations & associated technical guidance in force on the date of registration and for the regulations in the countries indicated

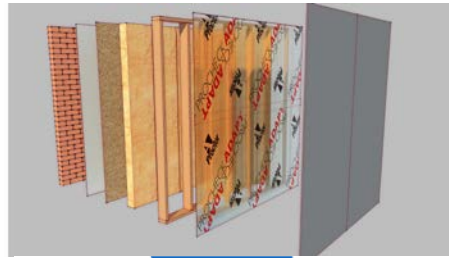
## Procheck Adapt

### Description of Product

This is an assessment of Proctor Procheck Adapt, which is a high performance variable permeability vapour control layer.

The vapour control layer is designed to protect the building fabric from potential risks of condensation and acts as an airtight barrier.

The barrier adapts to seasonal changes and humidity levels and becomes more resistant in winter and more permeable in summer.



### Key Factors Assessed

- Mechanical Resistance & Stability
- Safety in case of Fire
- Health Hygiene and Environmental
- Safety in Use
- Energy Economy and heat retention
- Durability serviceability and identification

### Validity

This certificate was first issued on 31<sup>st</sup> March 2018 and is valid until 31<sup>st</sup> March 2022.

Issue Dated 21<sup>st</sup> March 2019

## Scope of Registration

Procheck Adapt is designed to protect the fabric of a building from potential risks of condensation; it also acts as an airtight barrier.

The material is high performance and has a variable permeability. It can be used in a variety of commercial and residential applications.

Its permeability adapts during the seasons and changes in humidity levels becoming more resistant in winter and more permeable in summer.

This means the building fabric is protected from the damaging moisture levels associated with the cold and wet months of the winter and also it will allow the fabric to dry out effectively in the warmer and drier months.

The physical properties are:

Property	Test Method	Mean Results
Roll Size	-	1.5m x 50m
Weight	ISO 539	110g/m <sup>2</sup>
Nail Tear Resistance	EN 12310-1	MD 350N CD 375N
Tensile Strength	EN 12311-1	MD 350N/50mm CD 315N/50mm
Elongation	EN 12311-1	MD 20% CD 20%
Vapour Resistance	EN 12572	Sd 0.4m - 90m
Reaction to Fire	EN 13501-1	Class E

The material is translucent which aids the onsite fixing to structural frames. The product can be rolled out either, vertically or horizontally on to the internal face of the insulation.

It is held in place by fixing using mechanical fixings at approx.100-150mm centres. Overlaps on the material should be a minimum of 100mm wide; there is also an integral sealing lap tape that allows for a fast installation time, however it is important these laps line up without undue stress or wrinkles.

LABC and LABSS consider that, Procheck Adapt will meet the functional requirements of the Building Regulations (listed below) if the criteria detailed in this certificate are met;



## The Building Regulations 2010 (as amended) England & Wales

Regulation 7	Materials and workmanship
Note:	The product is acceptable.
AD B	Fire Safety
Note:	The product is acceptable as per the Scope of Registration.
AD C	Resistance to Moisture
Note:	The product is acceptable as per the Scope of Registration.
AD F	Ventilation
Note:	The product is acceptable as per the Scope of Registration.
AD L1A	Conservation of Fuel and Power in new dwellings
Note:	The product will contribute to the building's energy performance as increased airtightness and energy performance is achieved without the associated moisture and condensation issues that can arise.
AD L1B	Conservation of Fuel and Power in existing dwellings
Note:	The product will contribute to the building's energy performance as increased airtightness and energy performance is achieved without the associated moisture and condensation issues that can arise.
AD L2A	Conservation of Fuel and Power in new buildings other than dwellings
Note:	The product will contribute to the building's energy performance as increased airtightness and energy performance is achieved without the associated moisture and condensation issues that can arise.
AD L2B	Conservation of Fuel and Power in existing buildings other than dwellings
Note:	The product will contribute to the building's energy performance as increased airtightness and energy performance is achieved without the associated moisture and condensation issues that can arise.



## The Building Regulations 2010 (as amended) England

AD B	Fire Safety
Note:	The product is acceptable as per the Scope of Registration.
AD L1A	Conservation of Fuel and Power in new dwellings
Note:	The product will contribute to the building's energy performance as increased airtightness and energy performance is achieved without the associated moisture and condensation issues that can arise.
AD L1B	Conservation of Fuel and Power in existing dwellings
Note:	The product will contribute to the building's energy performance as increased airtightness and energy performance is achieved without the associated moisture and condensation issues that can arise.

## Non-Regulatory Information



### LABC Warranty

The use of the Procheck Adapt has not been assessed to meet the requirements of the LABC Warranty Technical Manual. If you would like to discuss a specific use please make an enquiry to [technical.services@labcwarranty.co.uk](mailto:technical.services@labcwarranty.co.uk)

## Supporting Documentation

Fire test certificate from BTTG Testing and Certification Ltd: report reference 27/03630/08/15

French certificate from the CSTB (Centre scientifique et technique du bâtiment): Report number EMI 17-26068633

Declaration of Performance (DOP-00001-01)

Procheck Adapt data sheet

Procheck Adapt installation guide

## Contact Information

A. Proctor Group Ltd  
The Haugh  
Blairgowrie  
PH10 7ER  
Tel: 01250 872261  
Email: [contact@proctorgroup.com](mailto:contact@proctorgroup.com)  
Web: [www.proctorgroup.com](http://www.proctorgroup.com)