



Certificate No: EWS976



This certificate is valid for Building Regulations & associated technical guidance in force on the date of registration and for the regulations in the countries indicated

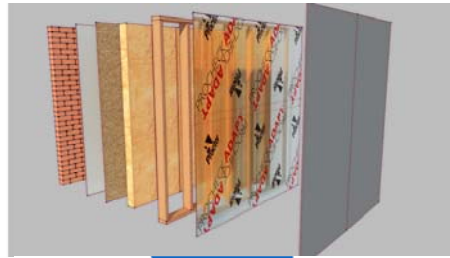
Procheck Adapt

Description of Product

This is an assessment of Proctor Procheck Adapt, which is a high performance variable permeability vapour control layer.

The vapour control layer is designed to protect the building fabric from potential risks of condensation and acts as an airtight barrier.

The barrier adapts to seasonal changes and humidity levels and becomes more resistant in winter and more permeable in summer.



Key Factors Assessed

- Mechanical Resistance & Stability
- Safety in case of Fire
- Health Hygiene and Environmental
- Safety in Use
- Energy Economy and heat retention
- Durability serviceability and identification

Validity

This certificate was first issued on 31st March 2018 and is valid until 31st March 2019.

Issue Dated 31st March 2018

Scope of Registration

Procheck Adapt is designed to protect the fabric of a building from potential risks of condensation; it also acts as an airtight barrier.

The material is high performance and has a variable permeability. It can be used in a variety of commercial and residential applications.

Its permeability adapts during the seasons and changes in humidity levels becoming more resistant in winter and more permeable in summer.

This means the building fabric is protected from the damaging moisture levels associated with the cold and wet months of the winter and also it will allow the fabric to dry out effectively in the warmer and drier months.

The physical properties are:

Property	Test Method	Mean Results
Roll Size	-	1.5m x 50m
Weight	ISO 539	110g/m ²
Nail Tear Resistance	EN 12310-1	MD 350N CD 375N
Tensile Strength	EN 12311-1	MD 350N/50mm CD 315N/50mm
Elongation	EN 12311-1	MD 20% CD 20%
Vapour Resistance	EN 12572	Sd 0.4m - 90m
Reaction to Fire	EN 13501-1	Class E

The material is translucent which aids the onsite fixing to structural frames. The product can be rolled out either, vertically or horizontally on to the internal face of the insulation.

It is held in place by fixing using mechanical fixings at approx.100-150mm centres. Overlaps on the material should be a minimum of 100mm wide; there is also an integral sealing lap tape that allows for a fast installation time, however it is important these laps line up without undue stress or wrinkles.

Conditions of Certificate

Cuts should be neatly formed around all penetrations as the membrane should be air and vapour tight. Profoil tape can be used for this sealing purpose and can also be used for scuffs or damage less than 25mm in size. Further guidance on installation can be obtained from the manufacturer.

The product must be installed as per the manufacturer's recommendations.

For Scotland purposes:

Preparation of the Substrate

Before installing Procheck adapt, ensure surfaces should be clean and dry.

Weather Conditions

Laying lightweight membranes in high wind conditions is difficult and appropriate precautions should be taken during installation.

Laps

Procheck Adapt can be rolled out either vertically or horizontally on the internal face of the insulation.

It can be held in place by fixing back to the substrate using applicable mechanical fixings at approx. 100-150mm centres. If using the Procheck Adapt with blown insulation the centres of fixing should be reduced to 50-100mm centres. A temporary fix back to the substrate can be made by using Probond Tape. Mechanical fixings can be made through the runs of Probond Tape to increase their vapour tightness.

If required to support insulation cross battens can be utilised and internal linings can be fixed to the battens as per normal drylining practices.

Overlaps should be a minimum of 100mm wide. Procheck Adapt has integral lap tape therefore ensure that lap lines up, without undue stress, or wrinkles in lap line, before removing release liner. As release liner is removed smooth the adhesive overlap line together and apply appropriate pressure to ensure full bonding of tape to membrane and sealing of overlap.

Where an overlap or join in the membrane does not coincide with the Integrated Tape the leading edge of the overlap can be sealed using the Profoil singled sided tape. The Profoil Tape should be installed in a similar manner to the integrated tape with appropriate hand pressure applied to ensure a continuous seal without wrinkles or folds.

Penetrations/Opening

Procheck Adapt should be cut and neatly formed around all openings and penetrations. Procheck Adapt should be made air and vapour tight with Profoil Tape.

Puncture Damage

Where puncture damage is unavoidable, apply a good sized patch of membrane (min. 150mm beyond damaged area) over the puncture, ensuring that there is a continuous seal of tape all the way around the hole. For small scuff type damage of less than 25mm, Profoil Tape may be used as an alternative.

Details

Attention to detail is important. Procheck Adapt needs to be continuous, and particular care is required sealing around penetrations and at perimeters and junctions.

Delivery & Site Handling

Rolls of Procheck Adapt are supplied to site with a label clearly identifying product name and grade. Rolls should be stored flat or upright on a clean, level surface and kept under cover.

Accessories

Profoil Tape and Probond Tape.

Health & Safety

There are no health and safety hazards associated with normal usage of Procheck Adapt.

The specifications and materials referred to have been assessed in accordance with the Building (Scotland) Regulations 2004 and in accordance with the supporting guidance in the Domestic Technical Handbooks which came into force with effect from 1 July 2017.

Where reference is made on a plan or specification document to any Code of Practice, British or European Standard or manufacturer's instruction it shall be construed as a reference to such publication in the form in which it is in force at the date of this Registered Detail.

The materials specified shall be for purposes of this Registered Detail and should not be changed without first gaining approval so to do from Local Authority Building Standards Scotland [LABSS]. Failure to do so will invalidate the Registered Detail.

The Registered Detail shall be valid for a period of 12 months from the date of issue or until otherwise invalidated by formal notice by LABSS.

The Registered Detail may be re-validated after 12 months following a request and payment of an annual renewal fee from the Registered Detail Holder.

This Registered Detail should not be regarded as a formal approval under the building warrant process prescribed by the Building (Scotland) Act 2003 enacted from 1 May 2005

This Registered Detail shall contribute to compliance with relevant Mandatory Standards specified under the Building (Scotland) Regulations 2004 as amended when read with the scope, conditions and regulations sections to this Registered Detail.

LABC and LABSS consider that, Procheck Adapt will meet the functional requirements of the Building Regulations (listed below) if the criteria detailed in this certificate are met;



The Building Regulations 2010 (as amended) England & Wales

Regulation 7	Materials and workmanship
Note:	The product is acceptable.
AD B	Fire Safety
Note:	The product is acceptable as per the Scope of Registration.
AD C	Resistance to Moisture
Note:	The product is acceptable as per the Scope of Registration.
AD F	Ventilation
Note:	The product is acceptable as per the Scope of Registration.
AD L1A	Conservation of Fuel and Power in new dwellings
Note:	The product will contribute to the building's energy performance as increased airtightness and energy performance is achieved without the associated moisture and condensation issues that can arise.
AD L1B	Conservation of Fuel and Power in existing dwellings
Note:	The product will contribute to the building's energy performance as increased airtightness and energy performance is achieved without the associated moisture and condensation issues that can arise.
AD L2A	Conservation of Fuel and Power in new buildings other than dwellings
Note:	The product will contribute to the building's energy performance as increased airtightness and energy performance is achieved without the associated moisture and condensation issues that can arise.
AD L2B	Conservation of Fuel and Power in existing buildings other than dwellings
Note:	The product will contribute to the building's energy performance as increased airtightness and energy performance is achieved without the associated moisture and condensation issues that can arise.



The Building Regulations 2010 (as amended) England

AD B	Fire Safety
Note:	The product is acceptable as per the Scope of Registration.
AD L1A	Conservation of Fuel and Power in new dwellings
Note:	The product will contribute to the building's energy performance as increased airtightness and energy performance is achieved without the associated moisture and condensation issues that can arise.
AD L1B	Conservation of Fuel and Power in existing dwellings
Note:	The product will contribute to the building's energy performance as increased airtightness and energy performance is achieved without the associated moisture and condensation issues that can arise.

AD L2A Conservation of Fuel and Power in new buildings other than dwellings
Note: The product will contribute to the building's energy performance as increased airtightness and energy performance is achieved without the associated moisture and condensation issues that can arise.

AD L2B Conservation of Fuel and Power in existing buildings other than dwellings
Note: The product will contribute to the building's energy performance as increased airtightness and energy performance is achieved without the associated moisture and condensation issues that can arise.



The Building Regulations 2010 (as amended) Wales

AD B Fire Safety
Note: The product is acceptable as per the Scope of Registration.

AD L1A Conservation of Fuel and Power in new dwellings
Note: The product will contribute to the building's energy performance as increased airtightness and energy performance is achieved without the associated moisture and condensation issues that can arise.

AD L1B Conservation of Fuel and Power in existing dwellings
Note: The product will contribute to the building's energy performance as increased airtightness and energy performance is achieved without the associated moisture and condensation issues that can arise.

AD L2A Conservation of Fuel and Power in new buildings other than dwellings
Note: The product will contribute to the building's energy performance as increased airtightness and energy performance is achieved without the associated moisture and condensation issues that can arise.

AD L2B Conservation of Fuel and Power in existing buildings other than dwellings
Note: The product will contribute to the building's energy performance as increased airtightness and energy performance is achieved without the associated moisture and condensation issues that can arise.



The Building (Scotland) Regulations 2004 (as amended)

Technical Handbooks Domestic and Non-Domestic

Regulation 8 Durability, workmanship and fitness of materials
0.8.5: Ways of establishing the fitness of materials
Note: Procheck Adapt is covered by a harmonized standard and is CE marked to EN 13984, Type A.

Regulation 9 Building Standards applicable to construction
Note: Construction shall be carried out so that the work complies with the applicable requirements of schedule 5.

Mandatory

Standard 3.10

Precipitation

Note:

The system is acceptable provided it is constructed in accordance with the manufacturer's details and by an accredited contractor.

Mandatory

Standard 3.15

Condensation

Note:

The system is acceptable provided it is constructed in accordance with the manufacturer's details and by an accredited contractor.

Mandatory

Standard 6.2

Building insulation envelope

Note:

The system will achieve the required U-value provided it is constructed in accordance with the manufacturer's details and by an accredited contractor.

Non-Regulatory Information



LABC Warranty

The use of the Procheck Adapt has not been assessed to meet the requirements of the LABC Warranty Technical Manual. If you would like to discuss a specific use please make an enquiry to technical.services@labcwarranty.co.uk

Supporting Documentation

Fire test certificate from BTTG Testing and Certification Ltd: report reference 27/03630/08/15

French certificate from the CSTB (Centre scientifique et technique du bâtiment): Report number EMI 17-26068633

Declaration of Performance (DOP-00001-01)

Procheck Adapt data sheet

Procheck Adapt installation guide

Contact Information

A. Proctor Group Ltd
The Haugh
Blairgowrie
PH10 7ER
Tel: 01250 872261
Email: contact@proctorgroup.com
Web: www.proctorgroup.com