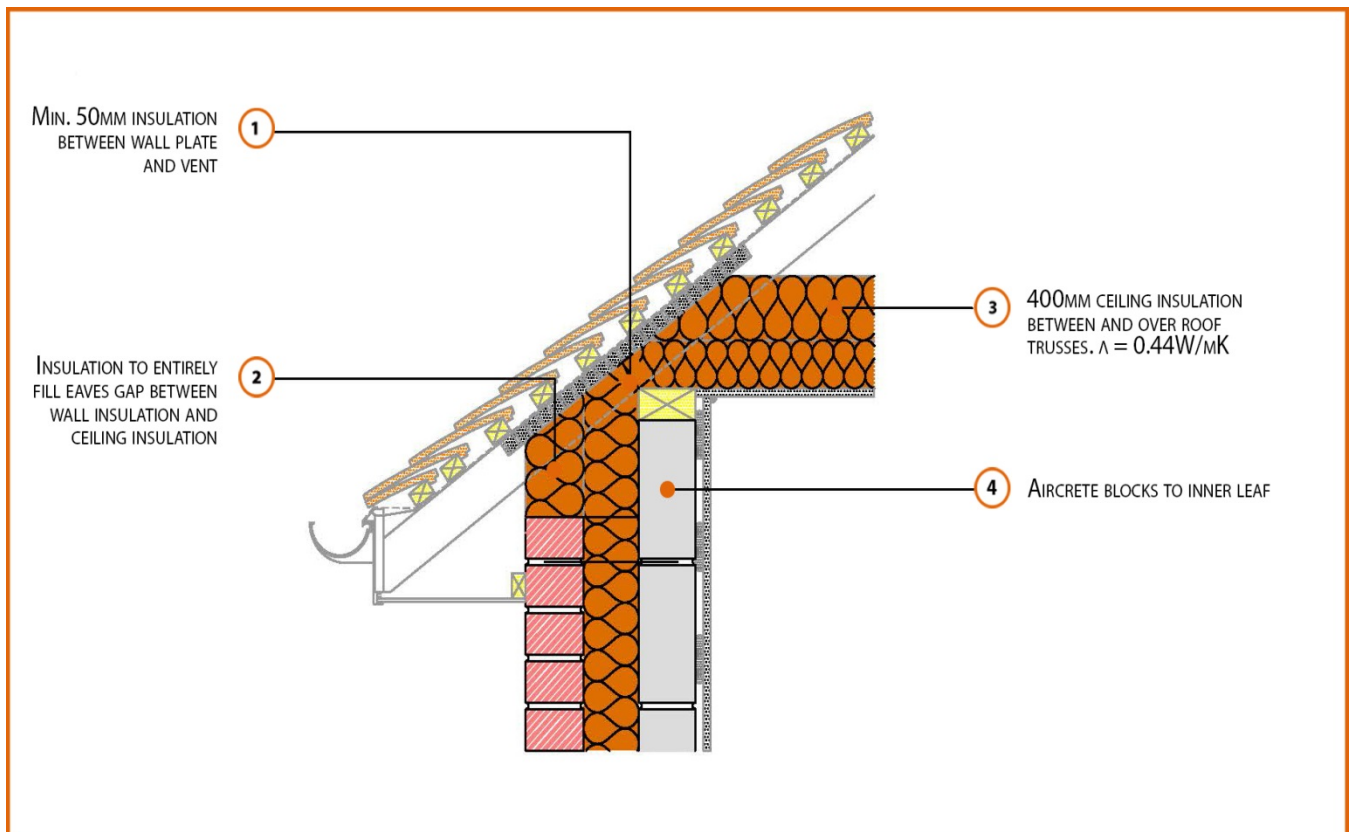


# LABC Registered Construction Details Masonry



Registration Number: E10MCFF4



## Build Up

External Masonry Cavity Wall

Masonry Outer Leaf ( $\lambda = 0.77$ )

100mm Aircrete Block Inner Leaf ( $\lambda = 0.11 \text{ W/mK}$ )

Full Fill Insulation

Pitched Roof Eaves (minimum pitch 40°)

400mm insulation quilt ( $0.044 \text{ W/mK}$ ) at Ceiling Level

Ventilated Loft



## Calculated $\psi$ -values

	Inner leaf blockwork
	Aircrete Block $\lambda = 0.11 \text{ W/mK}$
Cavity Insulation	$\psi$ -value $\text{W/mK}$
100mm $\lambda=0.037$	0.078
150mm $\lambda=0.037$	0.088
100mm $\lambda=0.032$	0.083
150mm $\lambda=0.032$	0.093

## Points to Watch

- Ensure cavities are kept clean of mortar snots and other debris during construction
- Ensure gap between wall plate and eaves ventilator is fully filled to maintain continuity of insulation through the junction.
- Any vapour permeable roof underlay should be used in accordance with manufacturer's recommendations where it may be in contact with the insulation.
- The eaves insulation should not compromise the cross flow ventilation or free water drainage below timber battens.
- Fire resistance will also be required for room in roof situations.
- Fix ceiling plasterboard first and seal all gaps between ceiling and masonry then seal all penetrations through air barrier with flexible sealant.
- Read in conjunction with roof details E12 and E13.