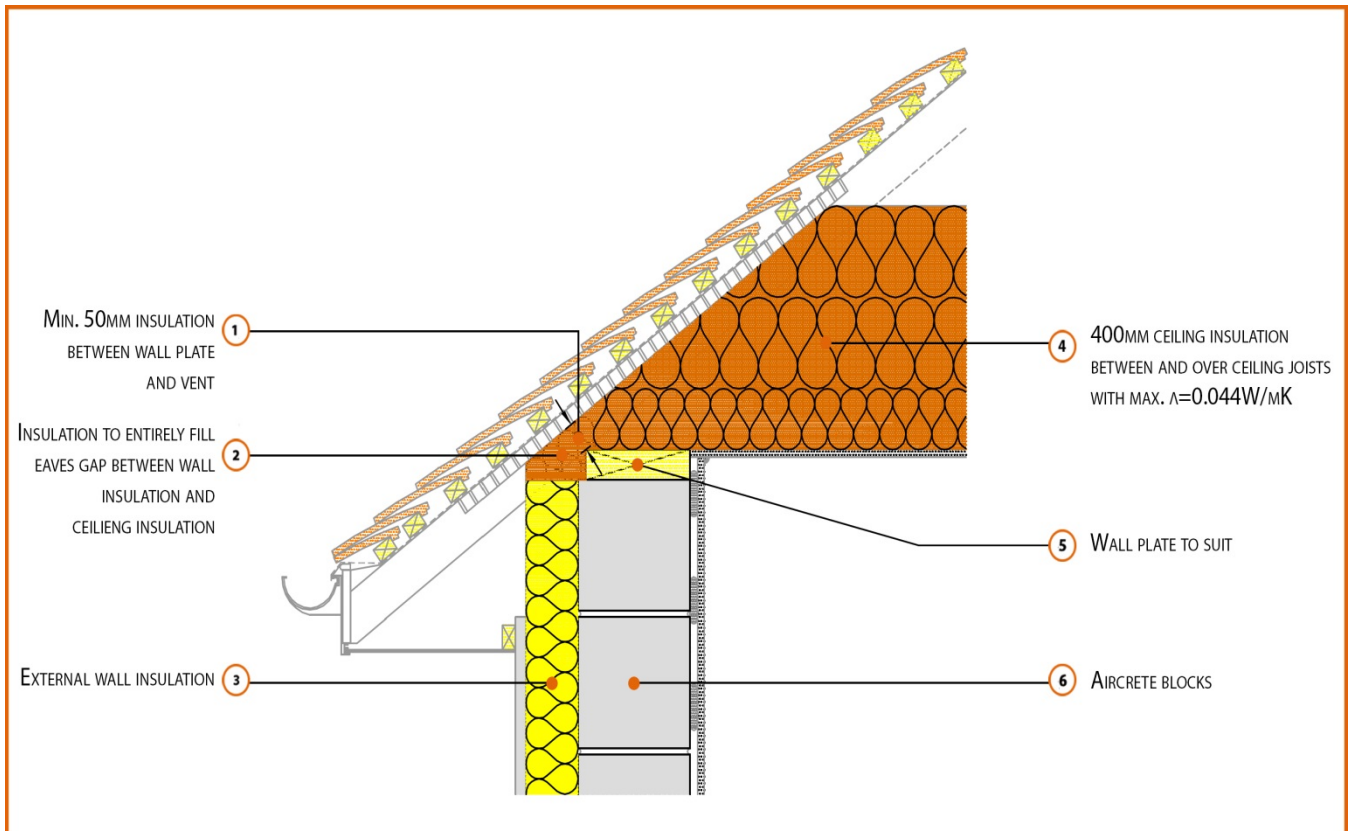


LABC Registered Construction Details Masonry



Registration Number: E10SMEW1



Build Up

Solid External Masonry Wall

215mm Aircrete Solid Wall ($\lambda \leq 0.11 \text{ W/mK}$)

Render & Insulation ($\lambda = 0.022 \text{ W/mK}$)

Pitched Roof Eaves (minimum pitch 40°)

400mm insulation quilt (0.044W/mK) at Ceiling Level



Calculated ψ -values

	Inner leaf blockwork
	Aircrete Block $\lambda \leq 0.11 \text{ W/mK}$
Cavity Insulation	ψ -value W/mK
50mm $\lambda=0.022$	0.091
75mm $\lambda=0.022$	0.098
100mm $\lambda=0.022$	0.105

Points to Watch

- Ensure block face is kept clean of mortar snots and other debris during construction to permit tight fit of external wall insulation.
- Ensure continuity between external wall insulation and roof insulation at junction.
- Any vapour permeable roof underlay should be used in accordance with manufacturer's recommendations where it may be in contact with the insulation.
- The eaves insulation should not compromise the cross flow ventilation or free water drainage below timber battens.
- Fire resistance will also be required for room in roof situations.
- Fix ceiling plasterboard first and seal all gaps between ceiling and masonry then seal all penetrations through air barrier with flexible sealant.
- Read in conjunction with roof details E12 and E13.