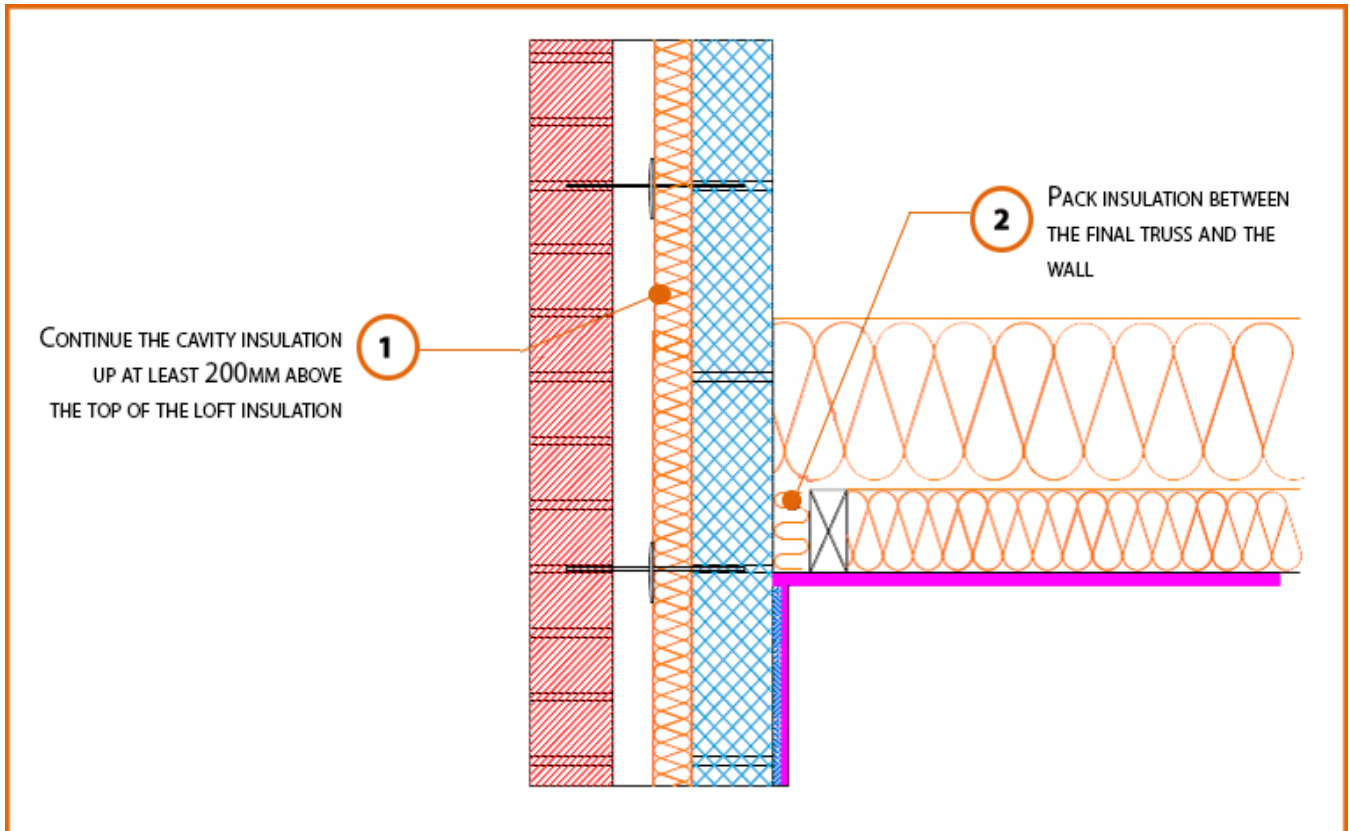


LABC Registered Construction Details Masonry



Registration Number: E12MCPF1



Build Up

External Masonry Cavity Wall

Masonry Outer Leaf ($\lambda = 0.77$)

Ultra Lightweight Concrete Block $\lambda \leq 0.28$ W/mK

Partial Fill Insulation

Pitched Roof Gable

400mm insulation (0.044W/Mk) at Ceiling Level

Ventilated Loft



Calculated ψ -values

	Inner leaf blockwork
	Ultra Lightweight Concrete Block $\lambda \leq 0.28$ W/mK
Cavity Insulation	Ψ -value W/mK
50mm $\lambda=0.022$	0.057
100mm $\lambda=0.022$	0.049

Points to Watch

- Ensure cavities are kept clean of mortar snots and other debris during construction
- Read in conjunction with roof details E10 and E11
- Fix ceiling plasterboard first and seal all gaps between ceiling and masonry then seal all penetrations through air barrier with flexible sealant.