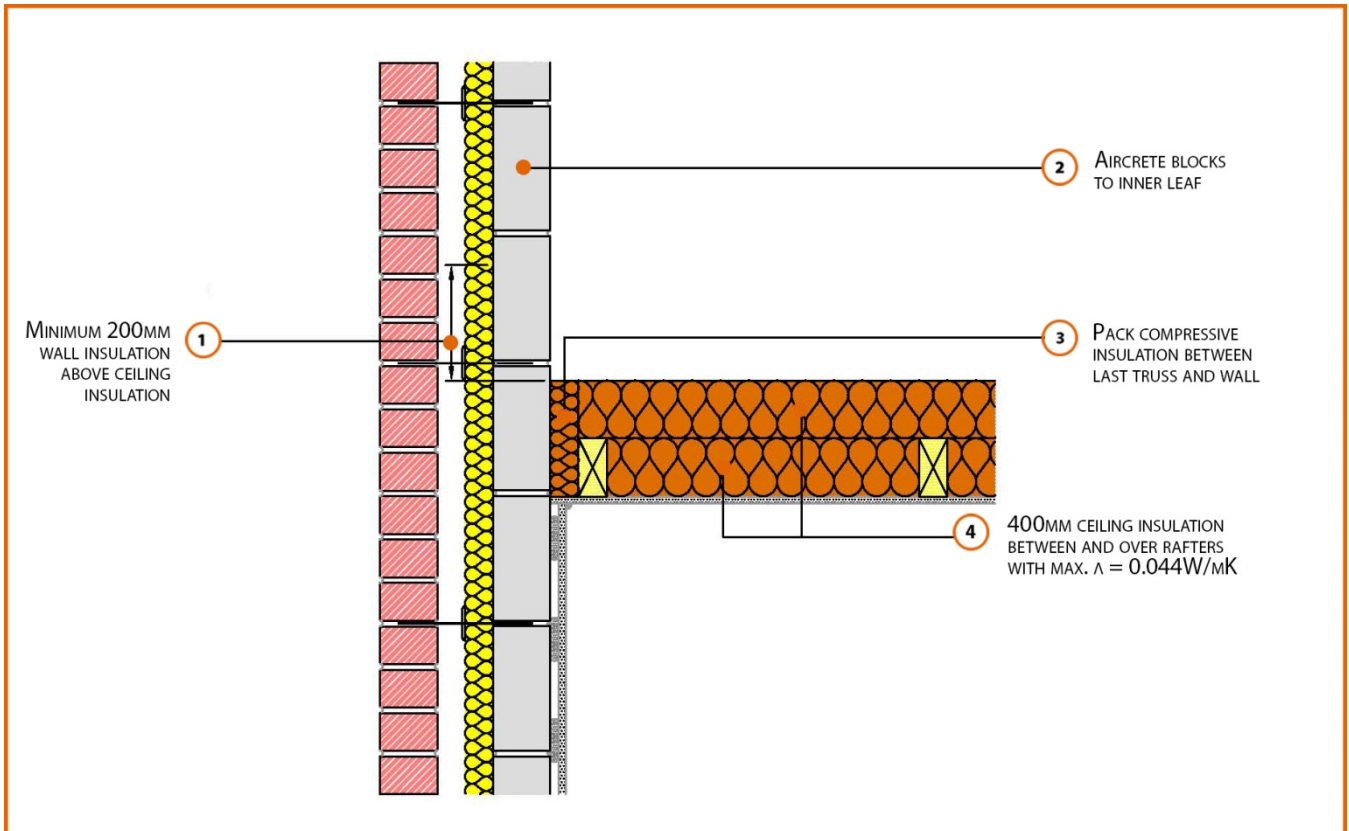


# LABC Registered Construction Details

## Masonry



Registration Number: E12MCPF4



### Build Up

External Masonry Cavity Wall

Masonry Outer Leaf ( $\lambda = 0.77$ )

100mm Aircrete Block Inner Leaf ( $\lambda = 0.11 \text{ W/mK}$ )

Partial Fill Insulation

Pitched Roof Gable

400mm insulation quilt ( $0.044\text{W/mK}$ ) at Ceiling Level

Ventilated Loft



## Calculated $\psi$ -values

Cavity Insulation	Inner leaf blockwork
	Aircrete Block $\lambda = 0.11$ W/mK
	$\psi$ -value W/mK
50mm $\lambda=0.022$	0.048
100mm $\lambda=0.022$	0.042

## Points to Watch

- Ensure cavities are kept clean of mortar snots and other debris during construction
- Read in conjunction with roof details E10 and E11
- Fix ceiling plasterboard first and seal all gaps between ceiling and masonry then seal all penetrations through air barrier with flexible sealant.