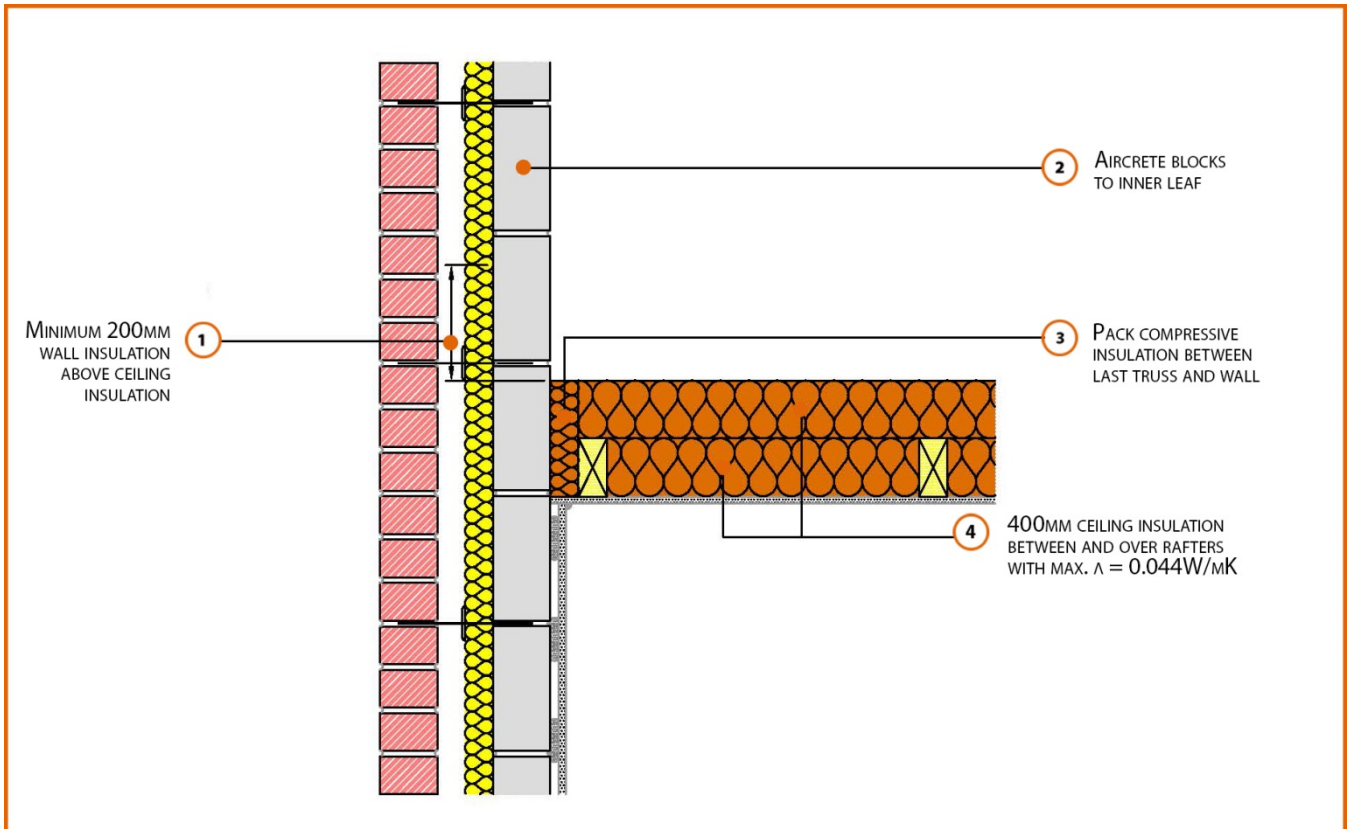


Registration Number: E12MCPF6



Build Up

External Masonry Cavity Wall

Masonry Outer Leaf ($\lambda = 0.77$)

100mm Aircrete Block Inner Leaf ($\lambda = 0.19 \text{ W/mK}$)

Partial Fill Insulation

Pitched Roof Gable

400mm insulation quilt (0.044W/mK) at Ceiling Level

Ventilated Loft

Calculated ψ -values

	Inner leaf blockwork
	Aircrete Block $\lambda = 0.19 \text{ W/mK}$
Cavity Insulation	ψ -value W/mK
50mm $\lambda=0.022$	0.061
100mm $\lambda=0.022$	0.055

Points to Watch

- Ensure cavities are kept clean of mortar snots and other debris during construction
- Read in conjunction with roof details E10 and E11
- Fix ceiling plasterboard first and seal all gaps between ceiling and masonry then seal all penetrations through air barrier with flexible sealant.