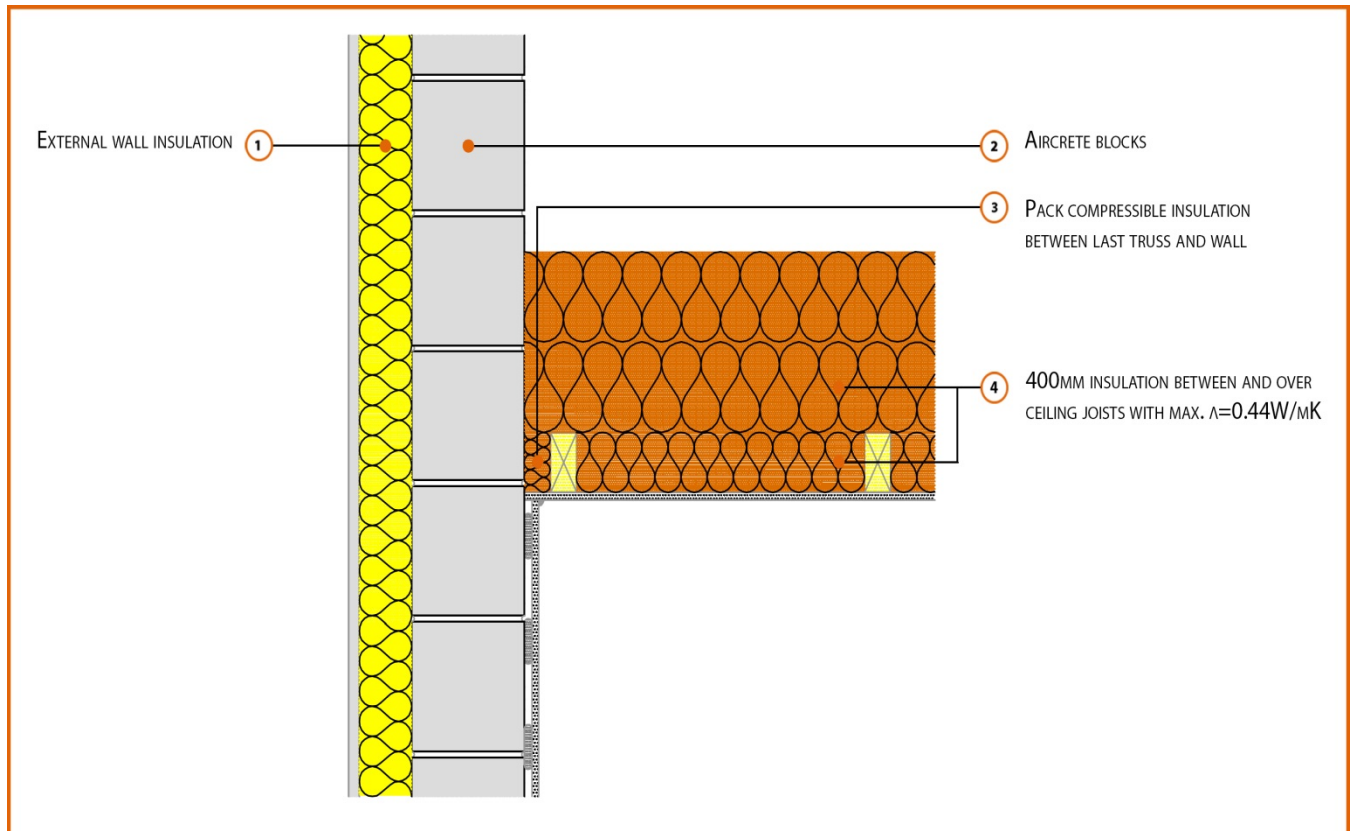


LABC Registered Construction Details Masonry



Registration Number: E12SMEW1



Build Up

Solid External Masonry Wall

215mm Aircrete Solid Wall ($\lambda \leq 0.11 \text{ W/mK}$)

Render & Insulation ($\lambda = 0.022 \text{ W/mK}$)

Pitched Roof Gable

400mm insulation quilt (0.044 W/mK) at Ceiling Level



Calculated ψ -values

	Inner leaf blockwork
	Aircrete Block $\lambda \leq 0.11$ W/mK
Cavity Insulation	ψ -value W/mK
50mm $\lambda=0.022$	0.052
75mm $\lambda=0.022$	0.050
100mm $\lambda=0.022$	0.050

Points to Watch

- Ensure block face is kept clean of mortar snots and other debris during construction to permit tight fit of external wall insulation.
- Read in conjunction with roof details E10 and E11.
- Fix ceiling plasterboard first and seal all gaps between ceiling and masonry then seal all penetrations through air barrier with flexible sealant.
- Ensure that the full depth of insulation extends to the inner face of the wall.
- Tightly pack compressible material between last truss/joist and gable wall.