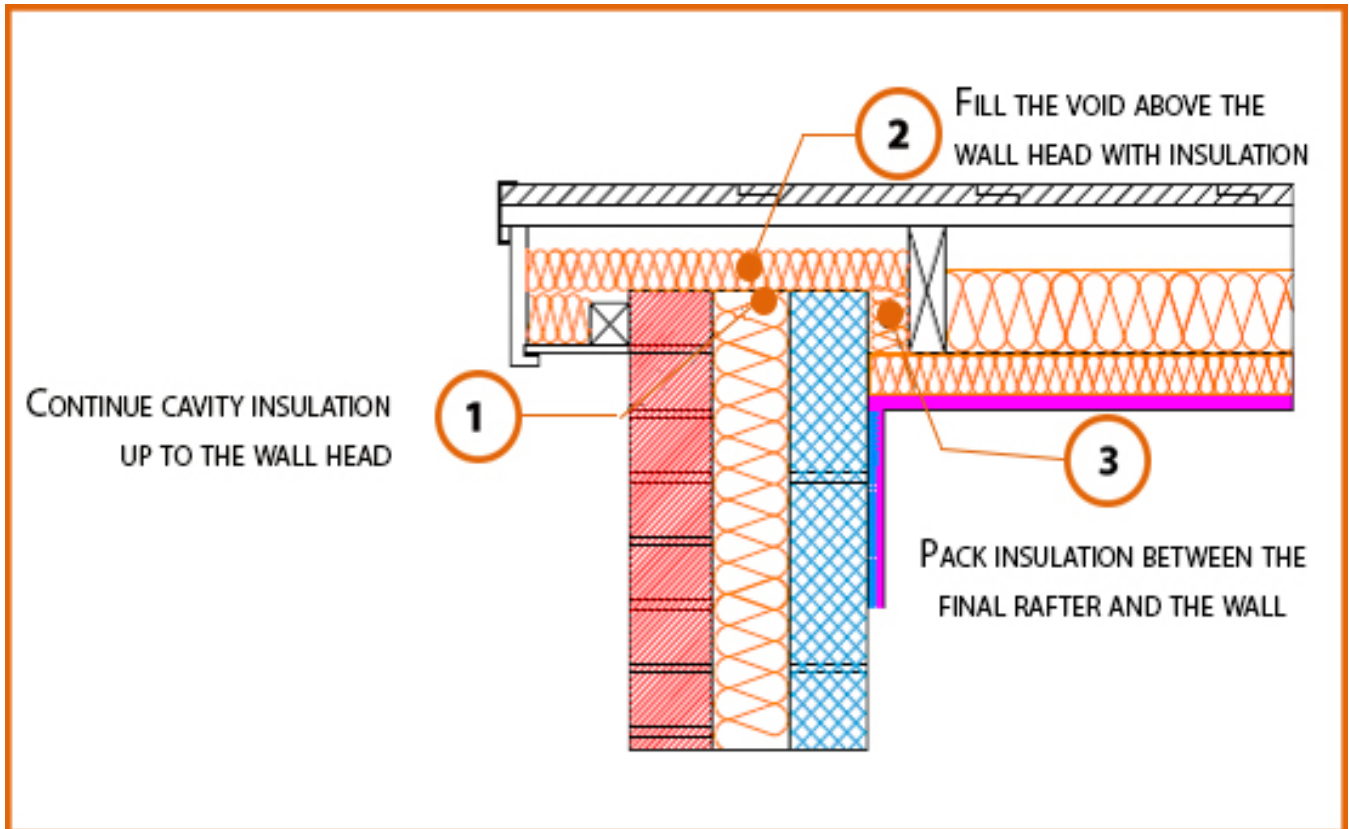


Registration Number: E13MCFF1



Build Up

External Masonry Cavity Wall

Masonry Outer Leaf ($\lambda = 0.77$)

Ultra Lightweight Concrete Block $\lambda \leq 0.28$ W/mK

Full Fill Insulation

Pitched Roof Gable

150mm insulation (0.022W/Mk) between rafters

50mm insulation (0.022W/Mk) beneath rafters

Calculated ψ -values

Cavity Insulation	Inner leaf blockwork
	Ultra Lightweight Concrete Block $\lambda \leq 0.28$ W/mK
	ψ -value W/mK
100mm $\lambda=0.037$	0.055
100mm $\lambda=0.032$	0.056
150mm $\lambda=0.037$	0.059
150mm $\lambda=0.032$	0.058

Points to Watch

- Ensure cavities are kept clean of mortar snots and other debris during construction
- Any vapour permeable roof underlay should be used in accordance with manufacturer's recommendations where it may be in contact with the insulation.
- Consider whether a vapour control plasterboard or separate vapour control barrier is required.
- Fix ceiling plasterboard first and seal all gaps between ceiling and masonry then seal all penetrations through air barrier with flexible sealant.
- Ensure that the insulation between the rafters is tightly cut and packed and in contact with the under rafter insulation.