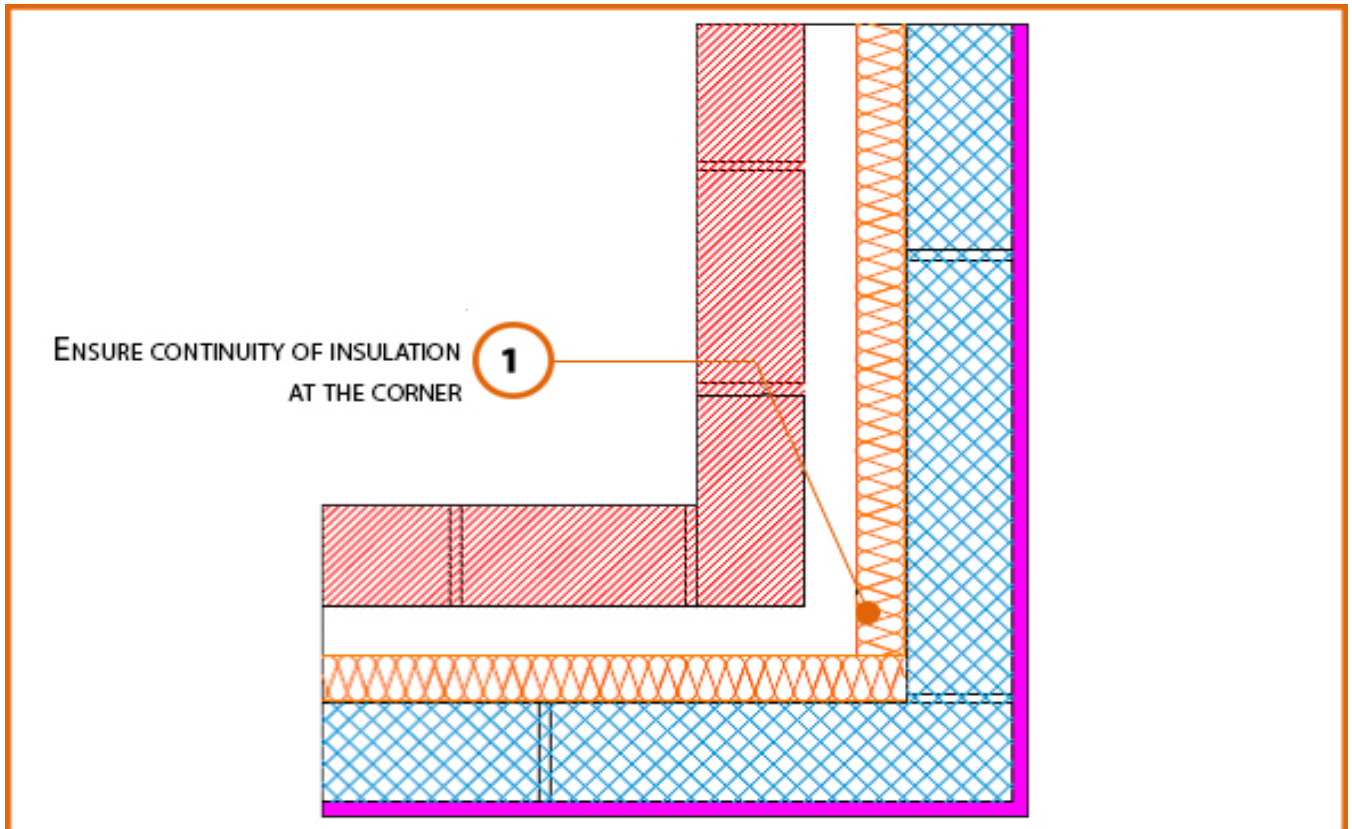


# LABC Registered Construction Details

## Masonry



Registration Number: E17MCPF2



### Build Up

External Masonry Cavity Wall

Masonry Outer Leaf ( $\lambda = 0.77$ )

Lightweight Concrete Block Inner Leaf  $\lambda \leq 0.60$  W/mK

Partial Fill Insulation

Inverted Corner



## Calculated $\psi$ -values

	Inner leaf blockwork
	Lightweight Concrete Block $\lambda \leq 0.60$ W/mK
Cavity Insulation	$\psi$ -value W/mK
50mm $\lambda=0.022$	-0.110
100mm $\lambda=0.022$	-0.059

## Points to Watch

- Ensure cavities are kept clean of mortar snots and other debris during construction.
- Seal all penetrations through air barrier with flexible sealant.