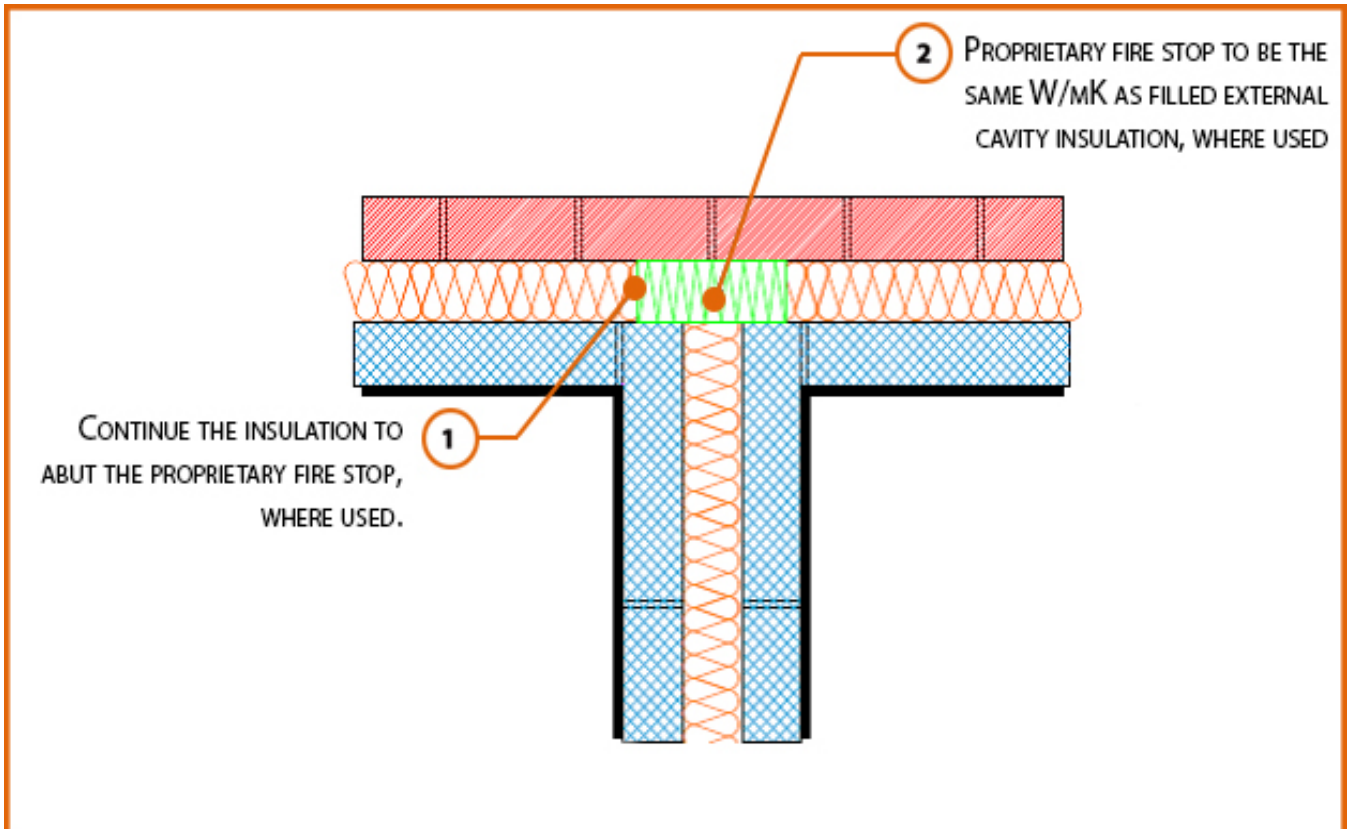


Registration Number: E18MCFF1



Build Up

External Masonry Cavity Wall

Masonry Outer Leaf ($\lambda = 0.77$)

100mm Ultra Lightweight Concrete Block $\lambda \leq 0.28$ W/mK Inner Leaf

Full Fill Insulation

2 x Lightweight Blockwork Leaves to Party (Separating) Wall

LABC Registered Construction Details Masonry



Calculated ψ -values

| Cavity Insulation | Inner leaf blockwork |
|-----------------------|---|
| | Ultra Lightweight Concrete Block $\lambda \leq 0.28$ W/mK |
| | ψ -value W/mK |
| 100mm $\lambda=0.037$ | 0.084 |
| 100mm $\lambda=0.032$ | 0.075 |
| 150mm $\lambda=0.037$ | 0.062 |
| 150mm $\lambda=0.032$ | 0.055 |

* Half the ψ -value shown should be applied to each dwelling

Points to Watch

- Ensure cavities are kept clean of mortar snots and other debris during construction
- Seal all penetrations through air barrier with flexible sealant.
- Separating walls require additional layers and components to comply with Fire and Noise requirements.
- This detail conforms with the MIMA good practice guide, when full fill insulation is used the cavity barrier is NOT a requirement of Approved Document Part B.
- Cavity barriers may require an additional vertical DPC and/or cavity tray.

