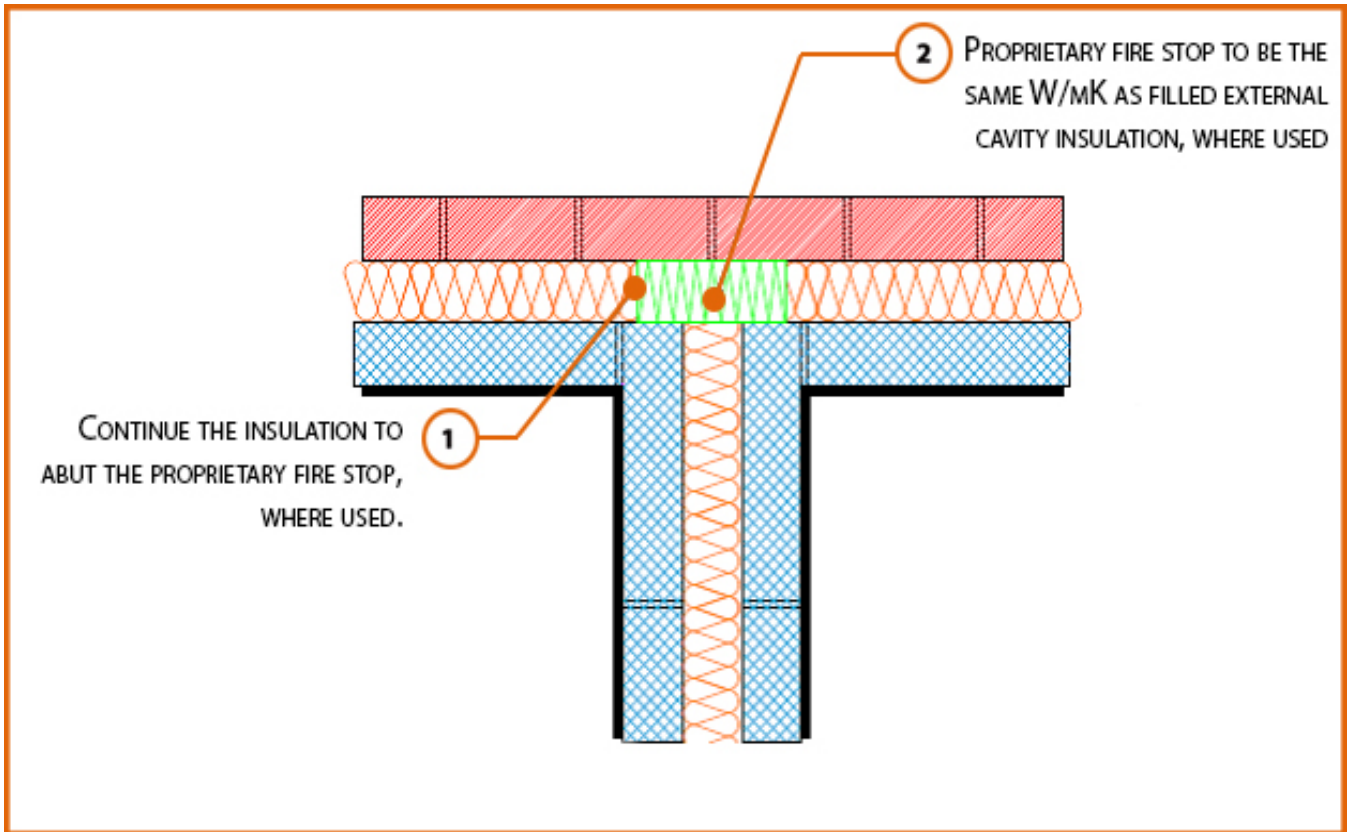


## Registration Number: E18MCFF6



### Build Up

External Masonry Cavity Wall

Masonry Outer Leaf ( $\lambda = 0.77$ )

100mm Dense Concrete Block  $\lambda \leq 1.33$  W/mK Inner Leaf

Full Fill Insulation

2 x Dense Blockwork Leaves to Party (Separating) Wall

# LABC Registered Construction Details Masonry



## Calculated $\psi$ -values

Cavity Insulation	Inner leaf blockwork
	Dense Concrete Block $\lambda \leq 1.33$ W/mK
$\psi$ -value W/mK	
100mm $\lambda=0.037$	0.096
100mm $\lambda=0.032$	0.084
150mm $\lambda=0.037$	0.067
150mm $\lambda=0.032$	0.060

\* Half the  $\psi$ -value shown should be applied to each dwelling

## Points to Watch

- Ensure cavities are kept clean of mortar snots and other debris during construction
- Seal all penetrations through air barrier with flexible sealant.
- Separating walls require additional layers and components to comply with Fire and Noise requirements.
- This detail conforms with the MIMA good practice guide, when full fill insulation is used the cavity barrier is NOT a requirement of Approved Document Part B.
- Cavity barriers may require an additional vertical DPC and/or cavity tray.

