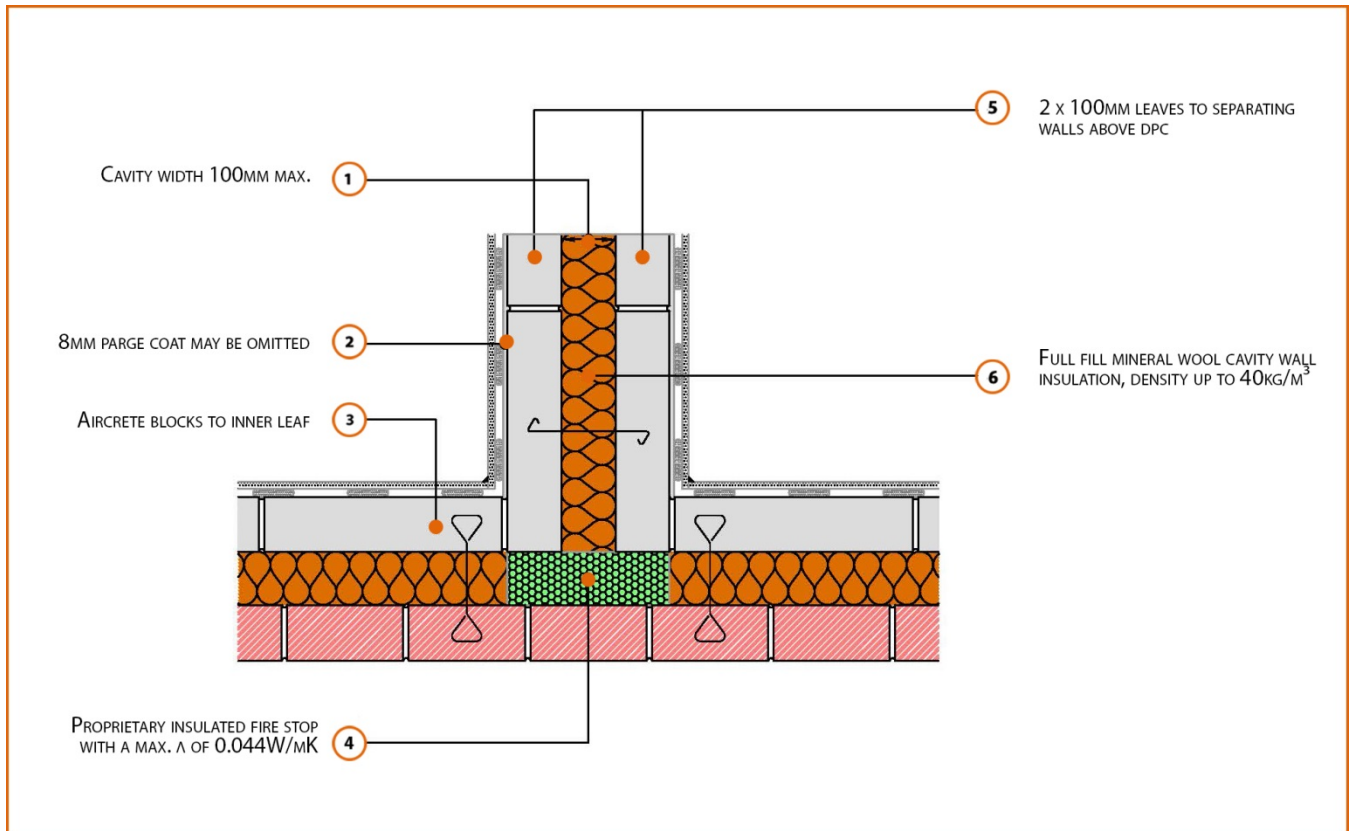


Registration Number: E18MCFF8



Build Up

External Masonry Cavity Wall

Masonry Outer Leaf ($\lambda = 0.77$)

100mm Aircrete Block Inner Leaf ($\lambda \leq 0.15$ W/mK)

Full Fill Insulation

2 x 100mm Aircrete Block (0.15W/m²K) Party (Separating) Wall

100mm cavity fully filled with insulation (0.044W/mK)

Calculated ψ -values

	Inner leaf blockwork
	Aircrete Block $\lambda = 0.15 \text{ W/mK}$
Cavity Insulation	ψ -value W/mK
100mm $\lambda=0.037$	0.044
150mm $\lambda=0.037$	0.034
100mm $\lambda=0.032$	0.044
150mm $\lambda=0.032$	0.034

Points to Watch

- Ensure cavities are kept clean of mortar snots and other debris during construction
- Seal all penetrations through air barrier with flexible sealant.
- Separating walls require additional layers and components to comply with Fire and Noise requirements.
- This detail conforms with the MIMA good practice guide, when full fill insulation is used the cavity barrier is NOT a requirement of Approved Document Part B.
- Cavity barriers may require an additional vertical DPC and/or cavity tray.