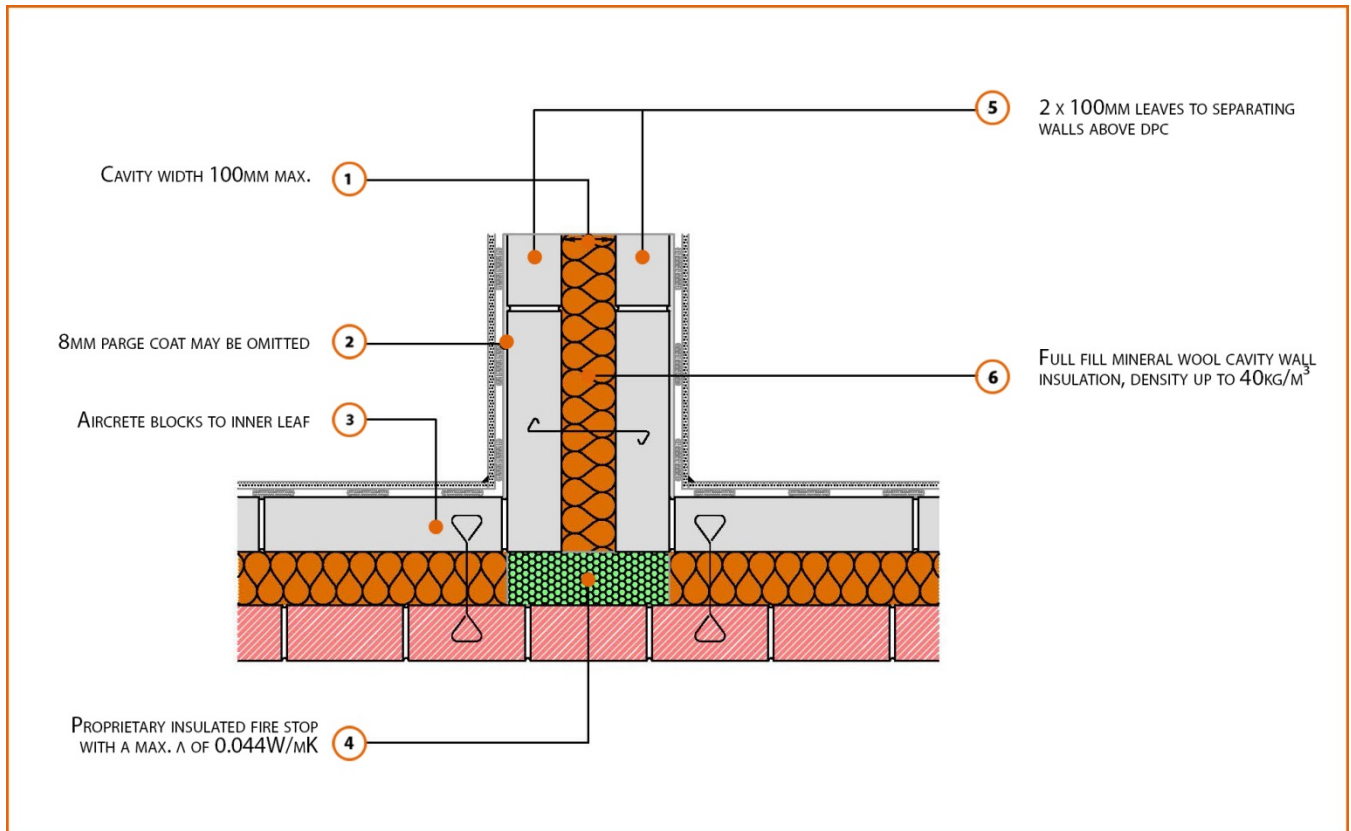


LABC Registered Construction Details Masonry



Registration Number: E18MCFF9



Build Up

External Masonry Cavity Wall

Masonry Outer Leaf ($\lambda = 0.77$)

100mm Aircrete Block Inner Leaf ($\lambda = 0.19$ W/mK)

Full Fill Insulation

2 x 100mm Aircrete Block ($0.15\text{W/m}^2\text{K}$) Party (Separating) Wall

100mm cavity fully filled with insulation (0.044W/mK)



Calculated ψ -values

	Inner leaf blockwork
	Aircrete Block $\lambda = 0.19 \text{ W/Mk}$
Cavity Insulation	ψ -value W/mK
100mm $\lambda=0.037$	0.045
150mm $\lambda=0.037$	0.035
100mm $\lambda=0.032$	0.044
150mm $\lambda=0.032$	0.034

Points to Watch

- Ensure cavities are kept clean of mortar snots and other debris during construction
- Seal all penetrations through air barrier with flexible sealant.
- Separating walls require additional layers and components to comply with Fire and Noise requirements.
- This detail conforms with the MIMA good practice guide, when full fill insulation is used the cavity barrier is NOT a requirement of Approved Document Part B.
- Cavity barriers may require an additional vertical DPC and/or cavity tray.