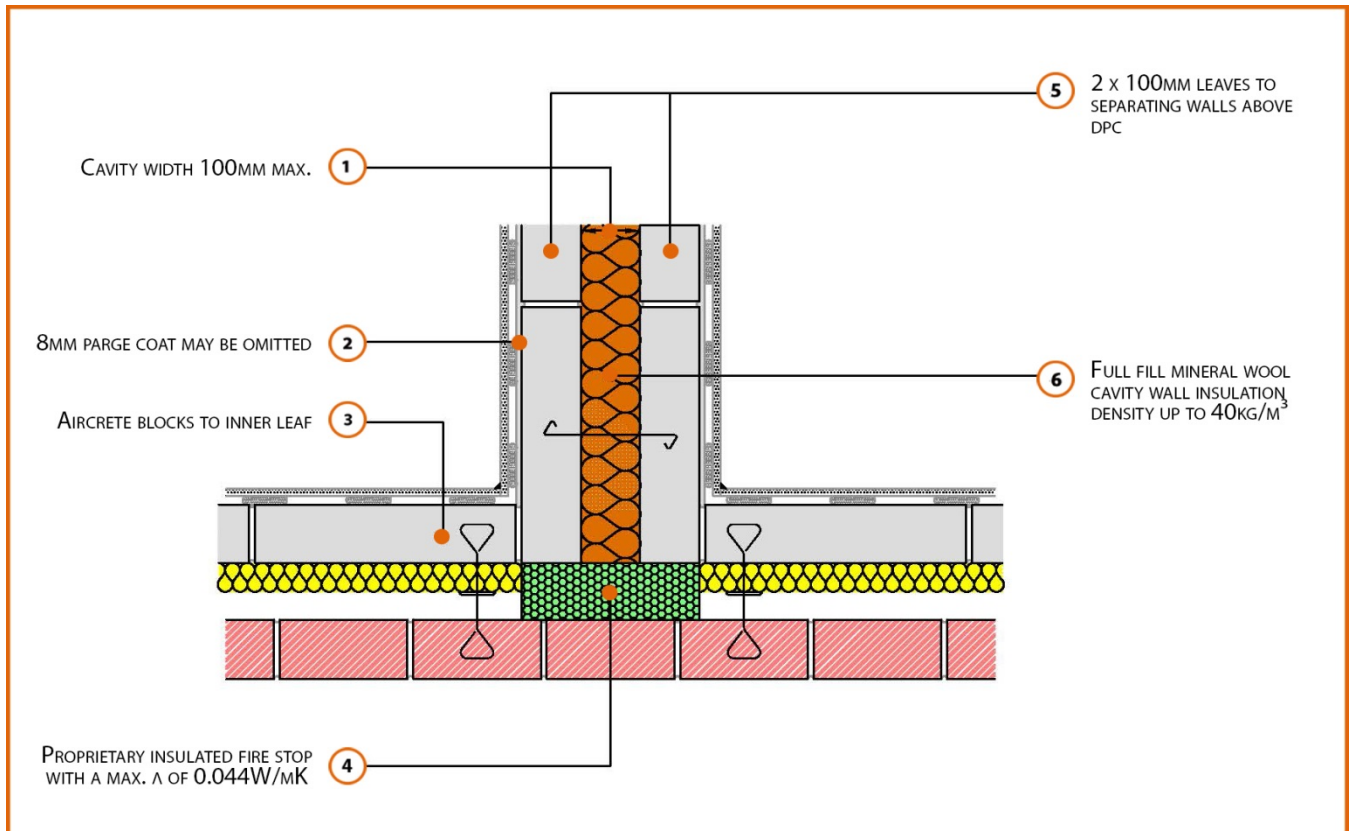


## Registration Number: E18MCPF12



### Build Up

External Masonry Cavity Wall

Masonry Outer Leaf ( $\lambda = 0.77$ )

100mm Aircrete Block Inner Leaf ( $\lambda = 0.19$  W/mK)

Partial Fill Insulation

Proprietary Insulated Firestop ( $\lambda = 0.044$ W/mK)

2 x 100mm Aircrete Block (0.19W/m<sup>2</sup>K) Party  
(Separating) Wall

100mm cavity fully filled with insulation  
(0.044W/mK)

## Calculated $\psi$ -values

	Inner leaf blockwork
	Aircrete Block $\lambda = 0.19$ W/mK
Cavity Insulation	$\psi$ -value W/mK
50mm $\lambda=0.022$	0.047
100mm $\lambda=0.022$	0.036

## Points to Watch

- Ensure cavities are kept clean of mortar snots and other debris during construction
- Seal all penetrations through air barrier with flexible sealant.
- Separating walls require additional layers and components to comply with Fire and Noise requirements.
- Cavity barriers may require an additional vertical DPC and/or cavity tray.
- Refer to ADBV2 Paragraphs 9.13 - 9.15 for construction and fixing of cavity barriers
- Refer to ADBV2 Appendix A Tables A1 and A2 for minimum periods of fire resistance