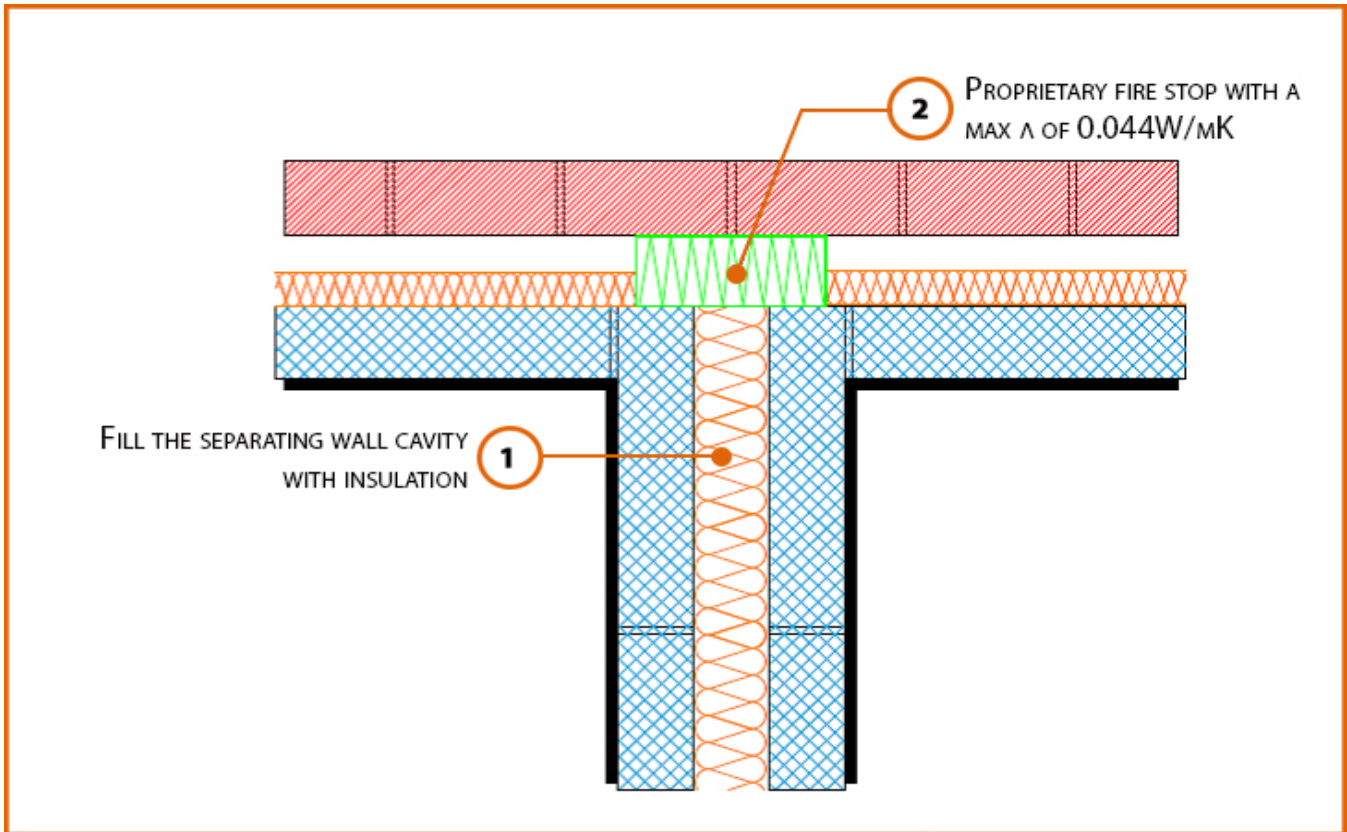


Registration Number: E18MCPF1



Build Up

External Masonry Cavity Wall

Masonry Outer Leaf ($\lambda = 0.77$)

100mm Ultra Lightweight Concrete Block $\lambda \leq 0.28 \text{ W/mK}$ Inner Leaf

Partial Fill Insulation

2 x Lightweight Blockwork Leaves to Party (Separating) Wall

LABC Registered Construction Details Masonry



Calculated ψ -values

	Inner leaf blockwork
	Ultra Lightweight Concrete Block $\lambda \leq 0.28$ W/mK
Cavity Insulation	ψ -value W/mK
50mm $\lambda=0.022$	0.083
100mm $\lambda=0.022$	0.052

* Half the ψ -value shown should be applied to each dwelling

Points to Watch

- Ensure cavities are kept clean of mortar snots and other debris during construction
- Seal all penetrations through air barrier with flexible sealant.
- Separating walls require additional layers and components to comply with Fire and Noise requirements.
- Cavity barriers may require an additional vertical DPC and/or cavity tray.
- Refer to ADBV2 Paragraphs 9.13 - 9.15 for construction and fixing of cavity barriers
- Refer to ADBV2 Appendix A Tables A1 and A2 for minimum periods of fire resistance

