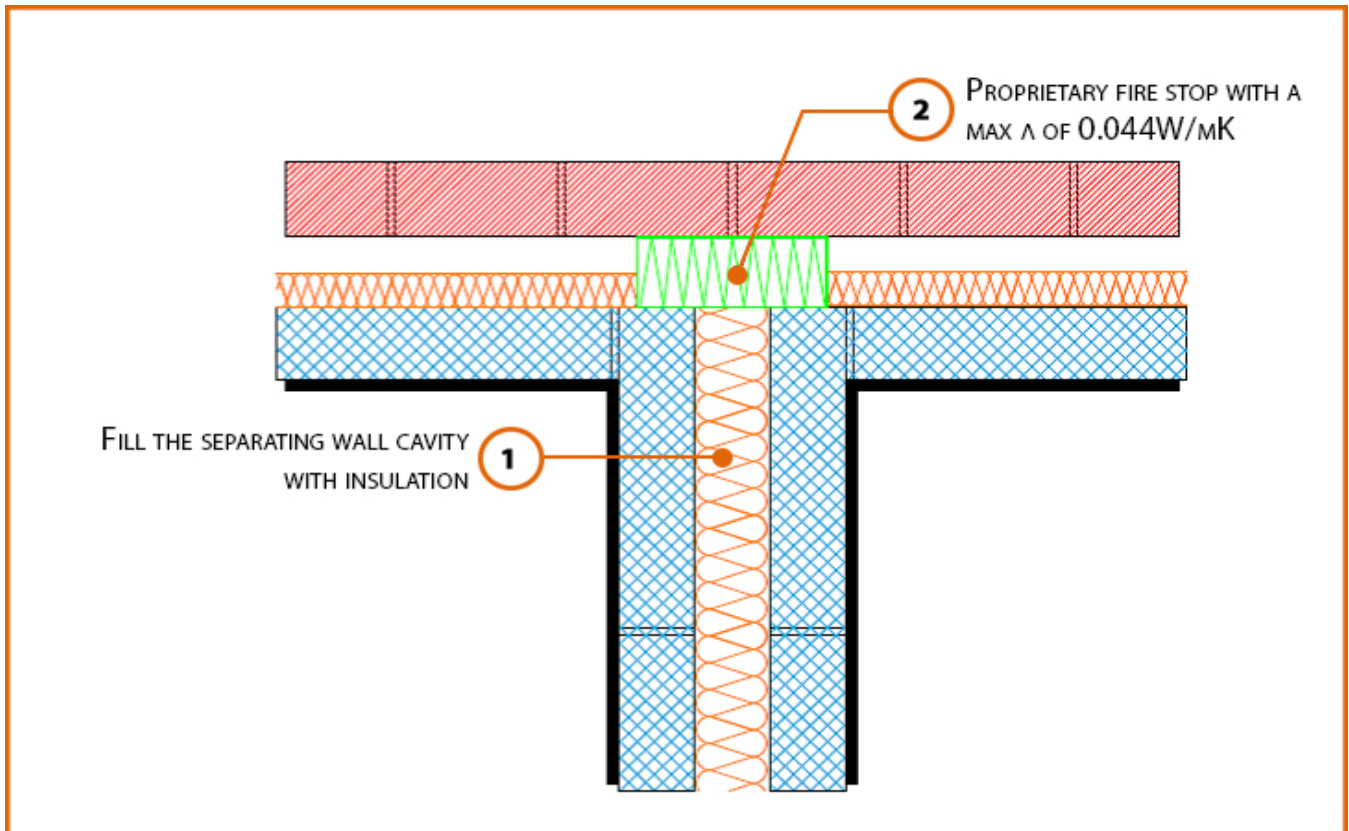


## Registration Number: E18MCPF5



### Build Up

External Masonry Cavity Wall

Masonry Outer Leaf ( $\lambda = 0.77$ )

100mm Lightweight Concrete Block  $\lambda \leq 0.60 \text{ W/mK}$  Inner Leaf

Partial Fill Insulation

2 x Dense Blockwork Leaves to Party (Separating) Wall

# LABC Registered Construction Details Masonry



## Calculated $\psi$ -values

	Inner leaf blockwork
	Lightweight Concrete Block $\lambda \leq 0.60$ W/mK
Cavity Insulation	$\psi$ -value W/mK
50mm $\lambda=0.022$	<b>0.091</b>
100mm $\lambda=0.022$	<b>0.055</b>

\* Half the  $\psi$ -value shown should be applied to each dwelling

## Points to Watch

- Ensure cavities are kept clean of mortar snots and other debris during construction
- Seal all penetrations through air barrier with flexible sealant.
- Separating walls require additional layers and components to comply with Fire and Noise requirements.
- Cavity barriers may require an additional vertical DPC and/or cavity tray.
- Refer to ADBV2 Paragraphs 9.13 - 9.15 for construction and fixing of cavity barriers
- Refer to ADBV2 Appendix A Tables A1 and A2 for minimum periods of fire resistance

