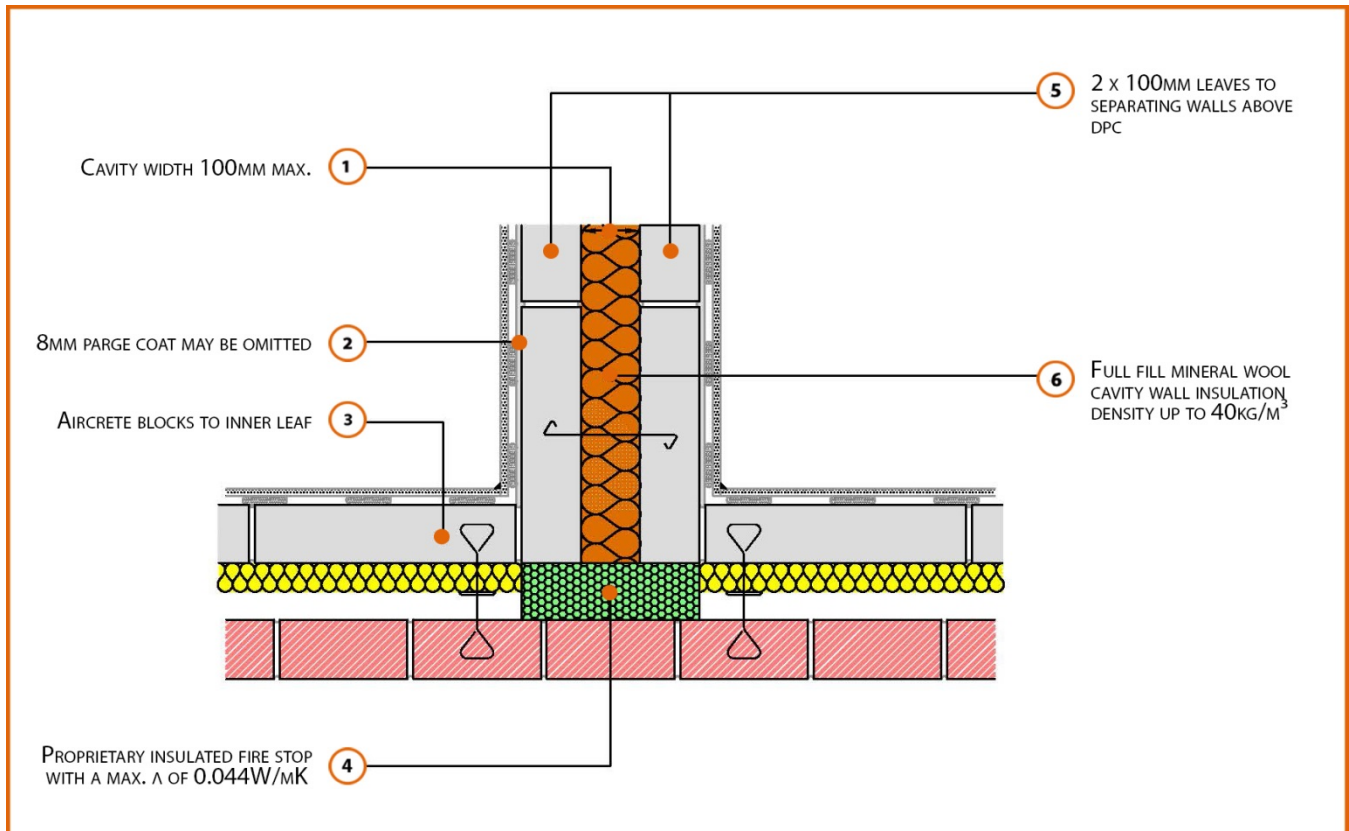


Registration Number: E18MCPF9



Build Up

External Masonry Cavity Wall

Masonry Outer Leaf ($\lambda = 0.77$)

100mm Aircrete Block Inner Leaf ($\lambda = 0.19$ W/mK)

Partial Fill Insulation

Proprietary Insulated Firestop ($\lambda = 0.044$ W/mK)

2 x 100mm Aircrete Block (0.15W/m²K) Party
(Separating) Wall

100mm cavity fully filled with insulation
(0.044W/mK)

Calculated ψ -values

	Inner leaf blockwork
	Aircrete Block $\lambda = 0.19 \text{ W/mK}$
Cavity Insulation	ψ -value W/mK
50mm $\lambda=0.022$	0.045
100mm $\lambda=0.022$	0.035

Points to Watch

- Ensure cavities are kept clean of mortar snots and other debris during construction
- Seal all penetrations through air barrier with flexible sealant.
- Separating walls require additional layers and components to comply with Fire and Noise requirements.
- Cavity barriers may require an additional vertical DPC and/or cavity tray.
- Refer to ADBV2 Paragraphs 9.13 - 9.15 for construction and fixing of cavity barriers
- Refer to ADBV2 Appendix A Tables A1 and A2 for minimum periods of fire resistance