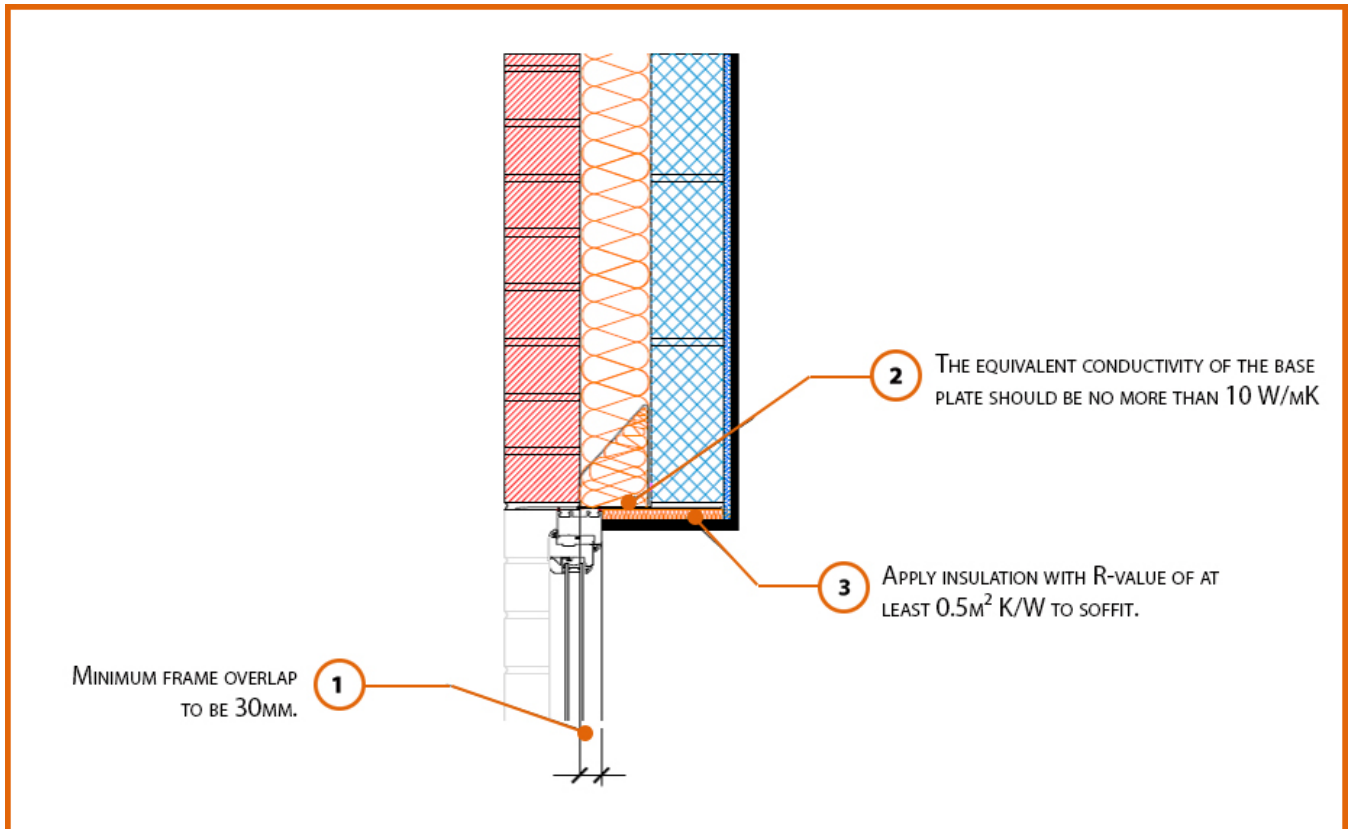


## Registration Number: E1MCFF1



### Build Up

External Masonry Cavity Wall

Masonry Outer Leaf ( $\lambda = 0.77$ )

Ultra Lightweight Concrete Block Inner Leaf ( $\lambda \leq 0.28$  W/mK)

Full Fill Insulation

2mm Folded Steel Lintel with Perforated Baseplate

(Insulated Soffit)

## Calculated $\psi$ -values

	Inner leaf blockwork
	Ultra Lightweight Concrete Block $\lambda \leq 0.28$ W/mK
Cavity Insulation	$\psi$ -value W/mK
100mm $\lambda=0.037$	0.292
100mm $\lambda=0.032$	0.302
150mm $\lambda=0.037$	0.305
150mm $\lambda=0.032$	0.313

## Points to Watch

- In certain situations, the lintel may also require fire resistance.
- Ensure that a 2mm thick lintel is available for the required opening width.
- A flexible sealant should be used between all interfaces of the internal air barrier and the window / door frame members.
- Ensure cavities are kept clean of mortar snots and other debris during construction.