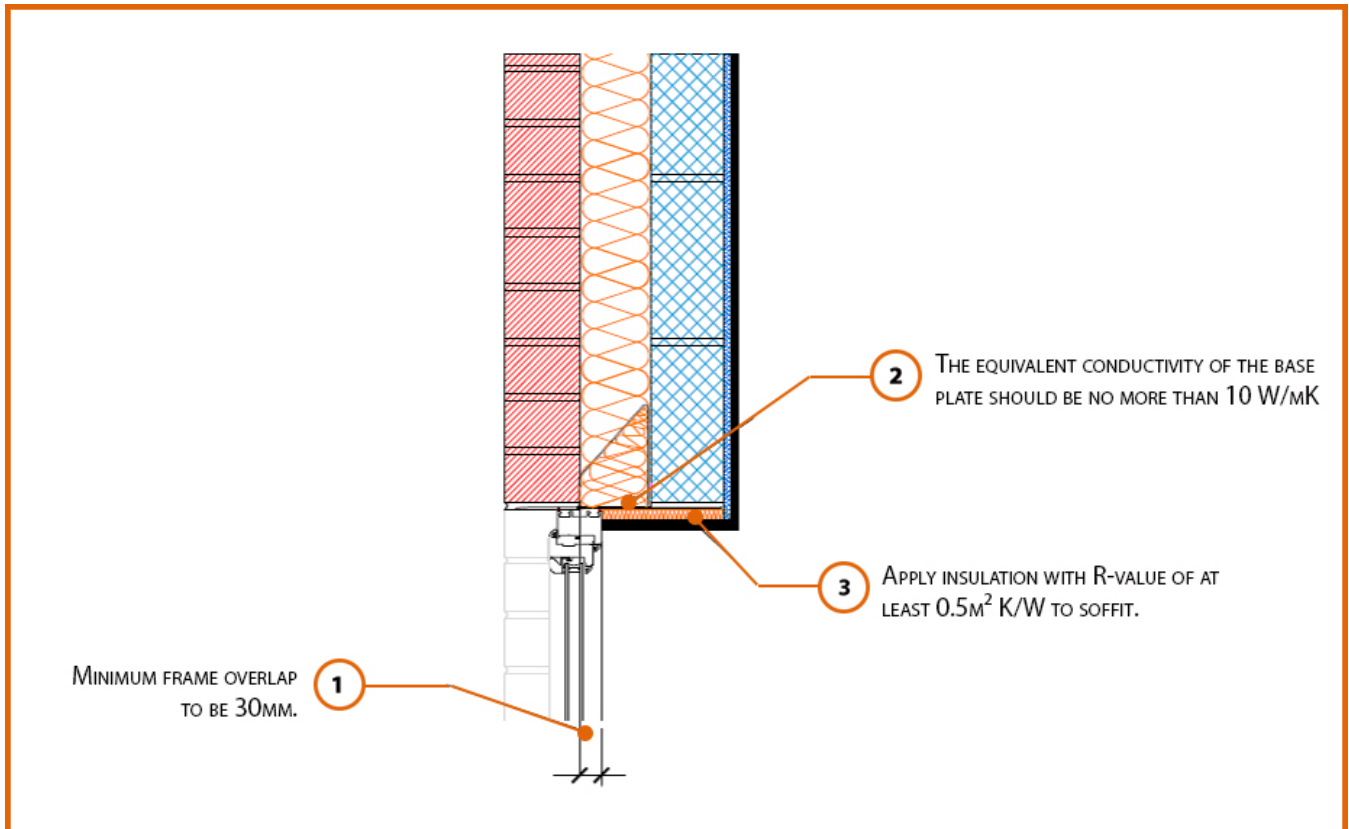


LABC Registered Construction Details Masonry



Registration Number: E1MCFF2



Build Up

External Masonry Cavity Wall

Masonry Outer Leaf ($\lambda = 0.77$)

Lightweight Concrete Block Inner Leaf ($\lambda \leq 0.60$ W/mK)

Full Fill Insulation

2mm Folded Steel Lintel with Perforated Baseplate

(Insulated Soffit)



Calculated ψ -values

	Inner leaf blockwork
	Lightweight Concrete Block $\lambda \leq 0.60 \text{ W/mK}$
Cavity Insulation	ψ -value W/mK
100mm $\lambda=0.037$	0.346
100mm $\lambda=0.032$	0.358
150mm $\lambda=0.037$	0.350
150mm $\lambda=0.032$	0.358

Points to Watch

- In certain situations, the lintel may also require fire resistance.
- Ensure that a 2mm thick lintel is available for the required opening width.
- A flexible sealant should be used between all interfaces of the internal air barrier and the window / door frame members.
- Ensure cavities are kept clean of mortar snots and other debris during construction.