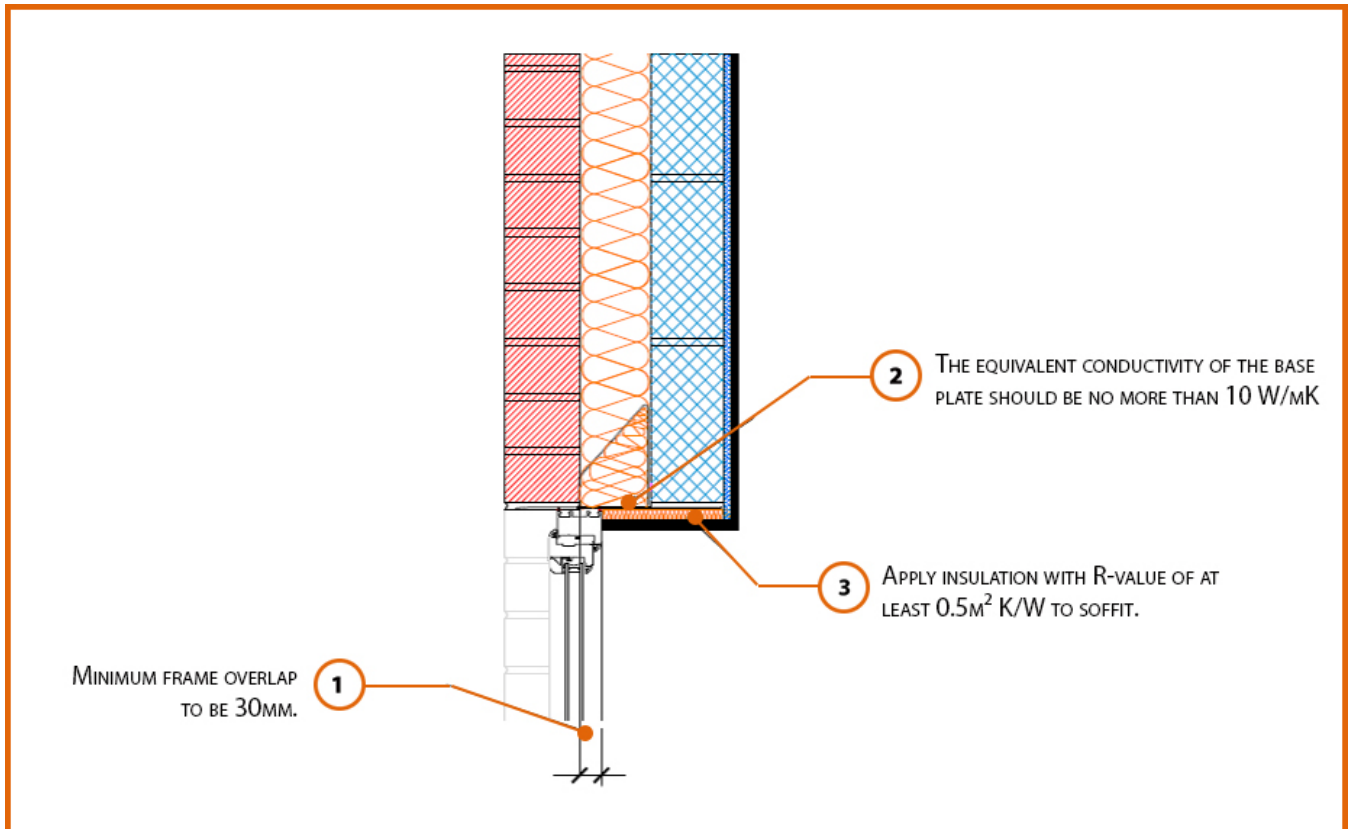


LABC Registered Construction Details

Masonry



Registration Number: E1MCFF3



Build Up

External Masonry Cavity Wall

Masonry Outer Leaf ($\lambda = 0.77$)

Dense Concrete Block Inner Leaf ($\lambda \leq 1.33$ W/mK)

Full Fill Insulation

2mm Folded Steel Lintel with Perforated Baseplate
(Insulated Soffit)



Calculated ψ -values

	Inner leaf blockwork
	Dense Concrete Block $\lambda \leq 1.33$ W/mK
Cavity Insulation	ψ -value W/mK
100mm $\lambda=0.037$	0.396
100mm $\lambda=0.032$	0.408
150mm $\lambda=0.037$	0.390
150mm $\lambda=0.032$	0.398

Points to Watch

- In certain situations, the lintel may also require fire resistance.
- Ensure that a 2mm thick lintel is available for the required opening width.
- A flexible sealant should be used between all interfaces of the internal air barrier and the window / door frame members.
- Ensure cavities are kept clean of mortar snots and other debris during construction.