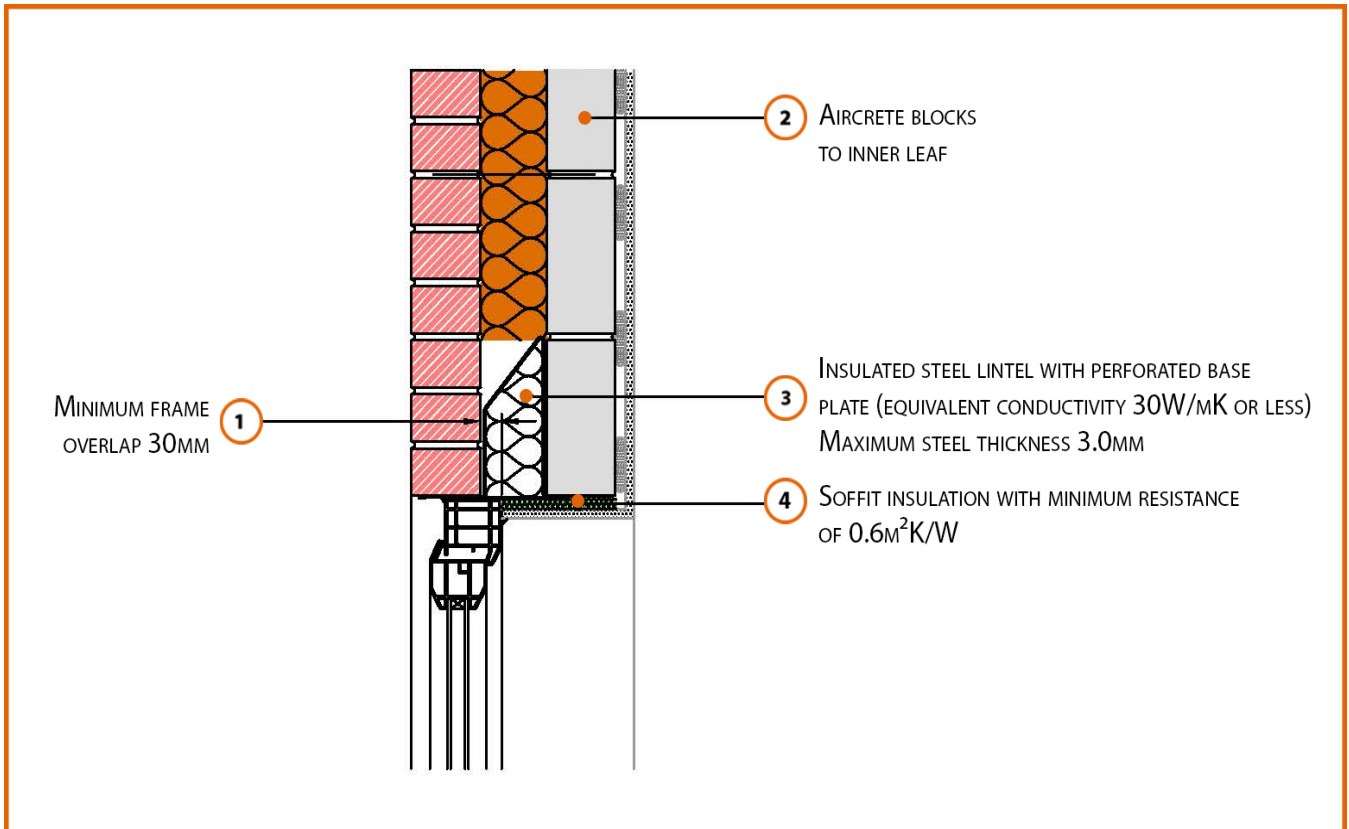


Registration Number: E1MCFF4



Build Up

External Masonry Cavity Wall

Masonry Outer Leaf ($\lambda = 0.77$)

100mm Aircrete Block Inner Leaf ($\lambda = 0.11$ W/mK)

Full Fill Insulation

3.0mm Steel Lintel with Perforated Baseplate

(Insulated Soffit)

Calculated ψ -values

Cavity Insulation	Inner leaf blockwork
	Aircrete Block $\lambda = 0.11$ W/mK
	ψ -value W/mK
100mm $\lambda=0.037$	0.347
150mm $\lambda=0.037$	0.361
100mm $\lambda=0.032$	0.353
150mm $\lambda=0.032$	0.366

Points to Watch

- In certain situations, the lintel may also require fire resistance
- Ensure that a 3mm thick lintel is available for the required opening width
- A flexible sealant should be used between all interfaces of the internal air barrier and the window / door frame members.
- Ensure cavities are kept clean of mortar snots and other debris during construction