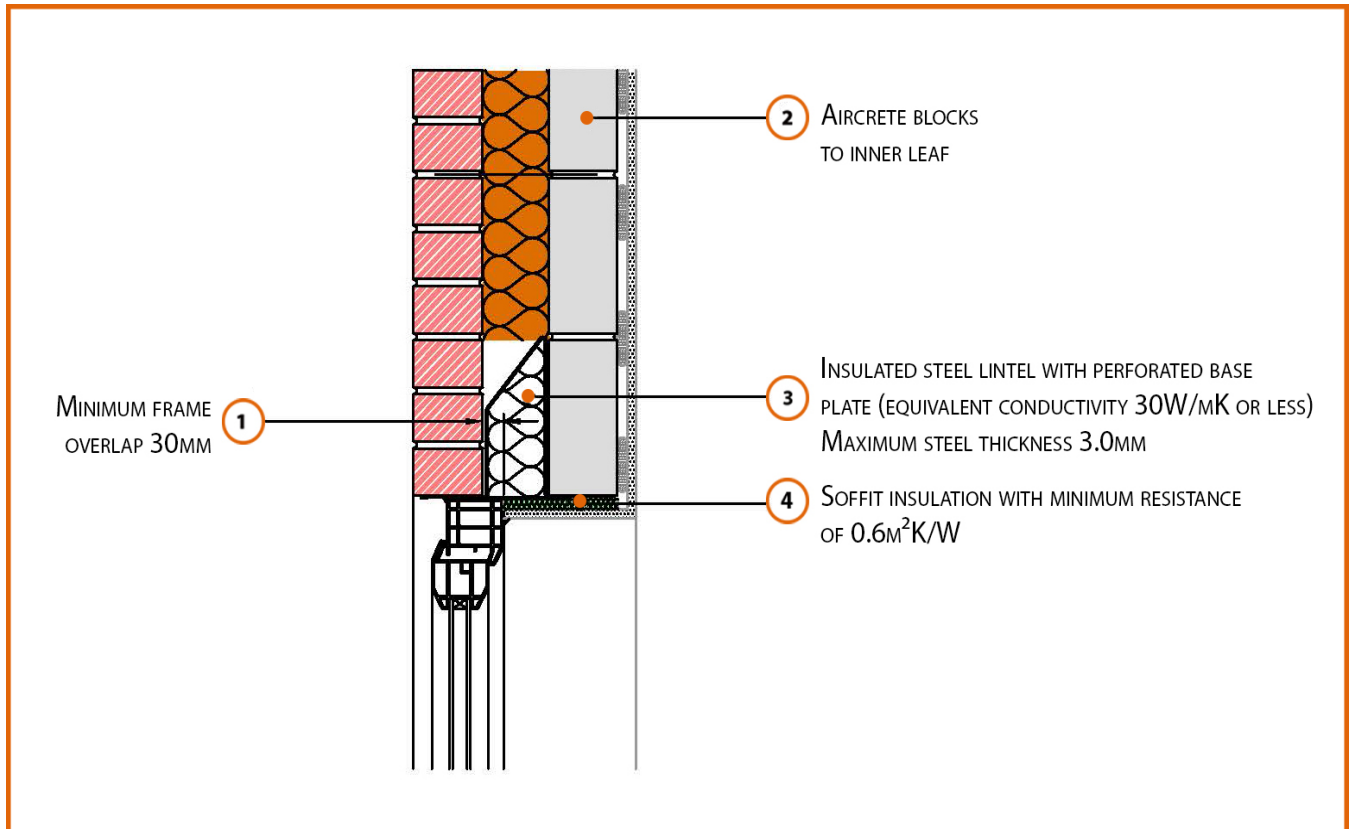


### Registration Number: E1MCFF6



#### Build Up

External Masonry Cavity Wall

Masonry Outer Leaf ( $\lambda = 0.77$ )

100mm Aircrete Block Inner Leaf ( $\lambda = 0.19$  W/mK)

Full Fill Insulation

3.0mm Steel Lintel with Perforated Baseplate

(Insulated Soffit)

## Calculated $\psi$ -values

	Inner leaf blockwork
	Aircrete Block $\lambda = 0.19 \text{ W/mK}$
Cavity Insulation	$\psi$ -value $\text{W/mK}$
100mm $\lambda=0.037$	0.371
150mm $\lambda=0.037$	0.383
100mm $\lambda=0.032$	0.378
150mm $\lambda=0.032$	0.388

## Points to Watch

- In certain situations, the lintel may also require fire resistance
- Ensure that a 3mm thick lintel is available for the required opening width
- A flexible sealant should be used between all interfaces of the internal air barrier and the window / door frame members.
- Ensure cavities are kept clean of mortar snots and other debris during construction