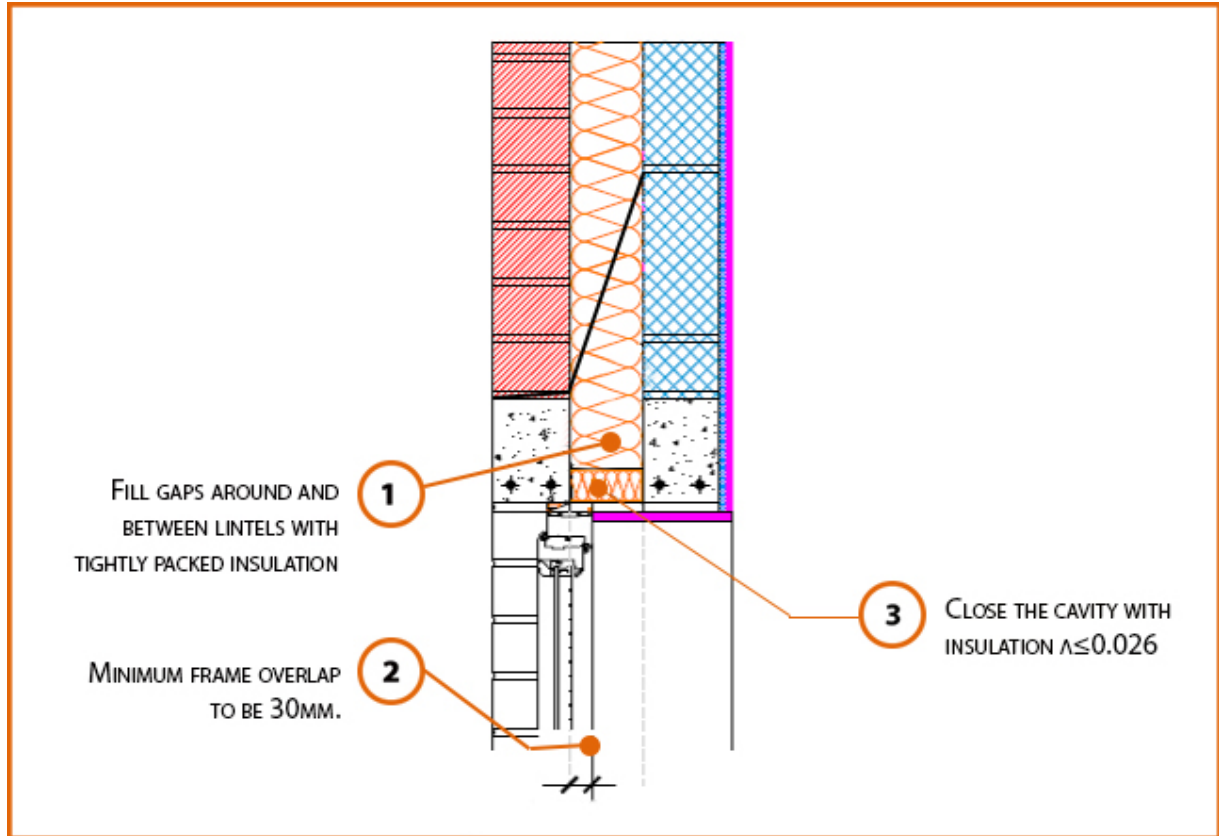


Registration Number: E2MCFF1



Build Up

External Masonry Cavity Wall

Masonry Outer Leaf ($\lambda = 0.77$)

Ultra Lightweight Concrete Block $\lambda \leq 0.28$ W/mK

Full Fill Insulation

Independent Concrete Lintel

Soffit Insulation

LABC Registered Construction Details Masonry



Calculated ψ -values

Cavity Insulation	Inner leaf blockwork
	Ultra Lightweight Concrete Block $\lambda \leq 0.28$ W/mK
	ψ -value W/mK
100mm $\lambda=0.037$	0.028
100mm $\lambda=0.032$	0.028
150mm $\lambda=0.037$	0.020
150mm $\lambda=0.032$	0.021

Points to Watch

- In certain situations, the lintel may also require fire resistance.
- A flexible sealant should be used between all interfaces of the internal air barrier and the window / door frame members.
- Cavity should be closed with a proprietary cavity closer or block of insulation.
- Ensure the cavity closer is in contact with the insulation within the cavity and the window / door frame.
- Ensure cavities are kept clean of mortar snots and other debris during construction.

