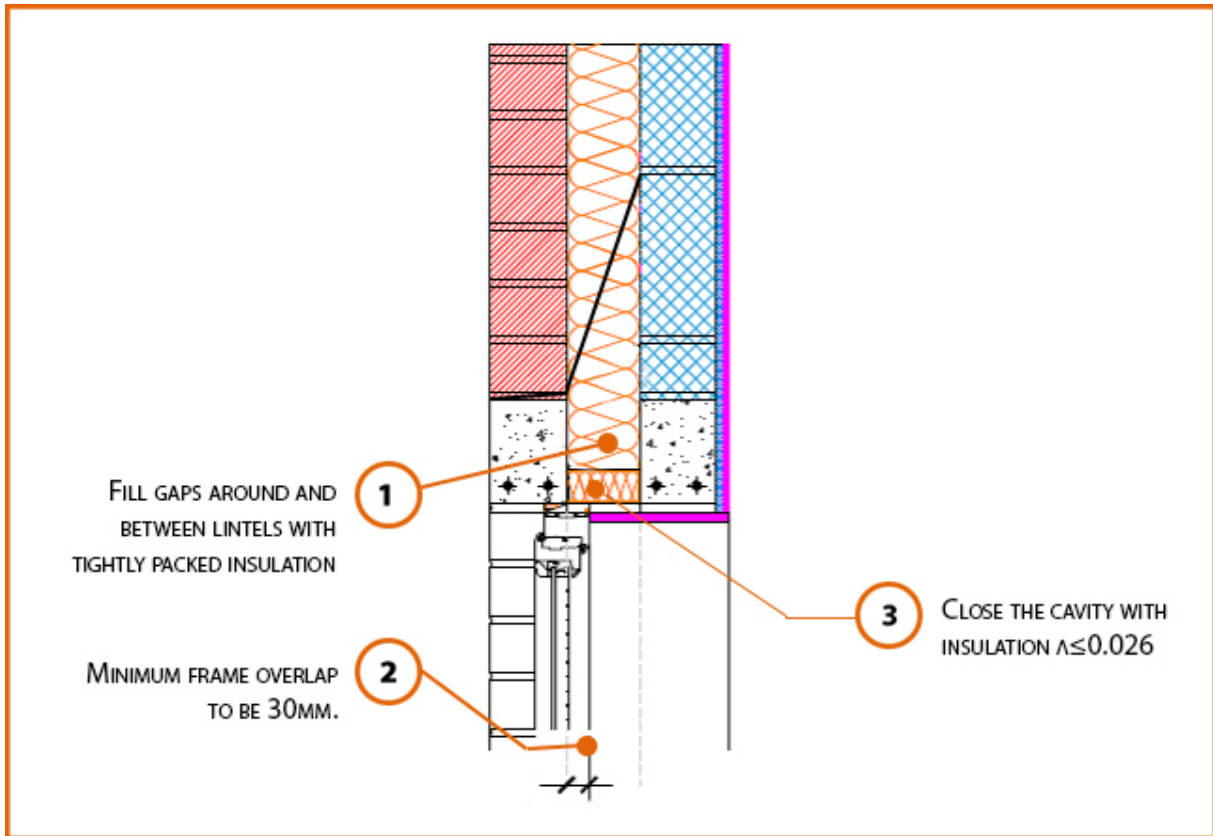


## Registration Number: E2MCFF2



### Build Up

External Masonry Cavity Wall

Masonry Outer Leaf ( $\lambda = 0.77$ )

Lightweight Concrete Block  $\lambda \leq 0.60$  W/mK

Full Fill Insulation

Independent Concrete Lintel

Soffit Insulation

## Calculated $\psi$ -values

Cavity Insulation	Inner leaf blockwork
	Lightweight Concrete Block $\lambda \leq 0.60$ W/mK
	$\psi$ -value W/mK
100mm $\lambda=0.037$	<b>0.023</b>
100mm $\lambda=0.032$	<b>0.024</b>
150mm $\lambda=0.037$	<b>0.018</b>
150mm $\lambda=0.032$	<b>0.019</b>

## Points to Watch

- In certain situations, the lintel may also require fire resistance.
- A flexible sealant should be used between all interfaces of the internal air barrier and the window / door frame members.
- Cavity should be closed with a proprietary cavity closer or block of insulation.
- Ensure the cavity closer is in contact with the insulation within the cavity and the window / door frame.
- Ensure cavities are kept clean of mortar snots and other debris during construction.