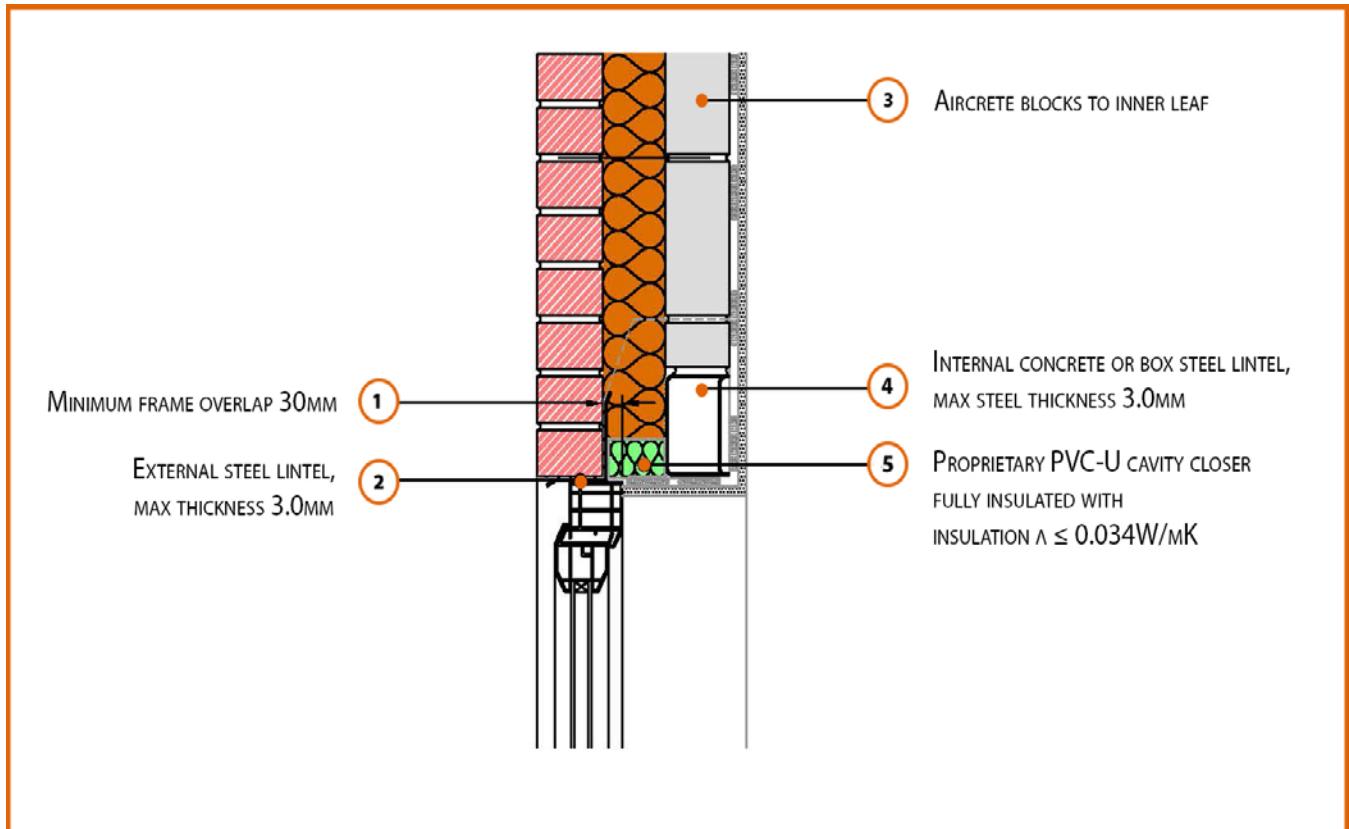


# LABC Registered Construction Details Masonry



Registration Number: E2MCFF4



## Build Up

External Masonry Cavity Wall

Masonry Outer Leaf ( $\lambda = 0.77$ )

100mm Aircrete Block Inner Leaf ( $\lambda = 0.11 \text{ W/mK}$ )

Full Fill Insulation

Independent Lintel (Max 3.0mm)

Proprietary PVC-U Cavity Closer



## Calculated $\psi$ -values

	Inner leaf blockwork
	Aircrete Block $\lambda = 0.11 \text{ W/mK}$
Cavity Insulation	$\psi$ -value $\text{W/mK}$
100mm $\lambda=0.037$	0.044
150mm $\lambda=0.037$	0.044
100mm $\lambda=0.032$	0.042
150mm $\lambda=0.032$	0.044

## Points to Watch

- In certain situations, the lintel may also require fire resistance
- Ensure that a max 3mm thick lintel is available for the required opening width
- A flexible sealant should be used between all interfaces of the internal air barrier and the window / door frame members.
- Cavity should be closed with a proprietary cavity closer or block of insulation
- Ensure the cavity closer is in contact with the insulation within the cavity and the window / door frame.
- Ensure cavities are kept clean of mortar snots and other debris during construction