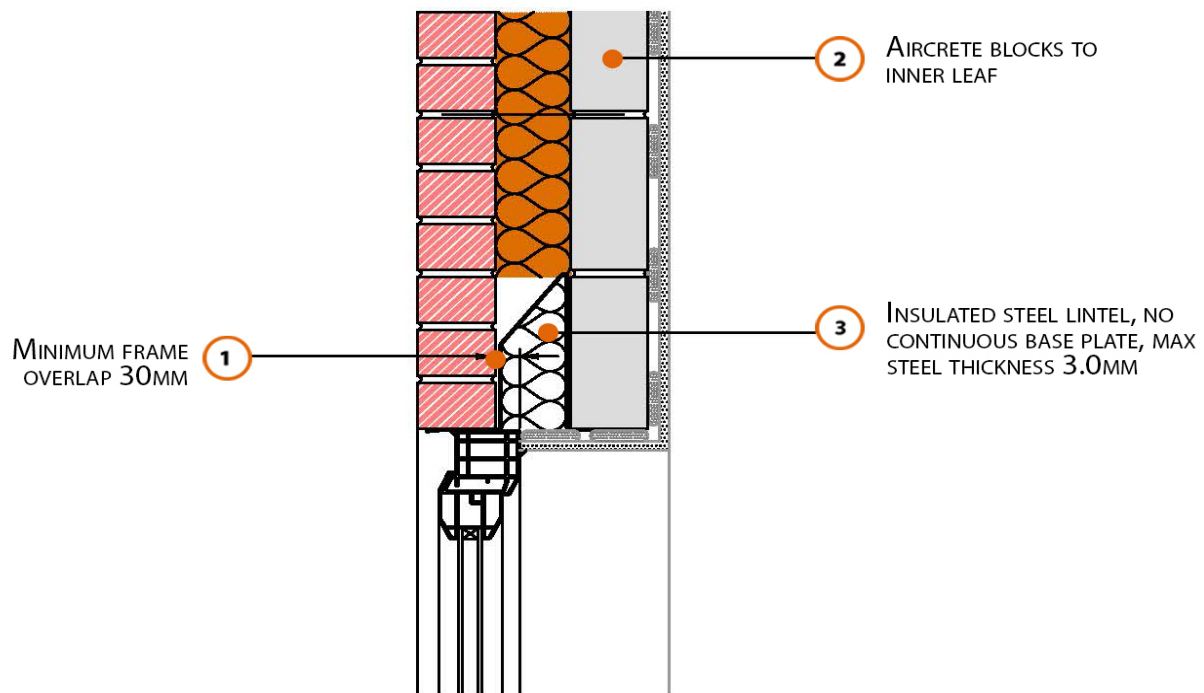


LABC Registered Construction Details Masonry



Registration Number: E2MCFF9



Build Up

External Masonry Cavity Wall

Masonry Outer Leaf ($\lambda = 0.77$)

100mm Aircrete Block Inner Leaf ($\lambda = 0.19 \text{ W/mK}$)

Full Fill Insulation

Steel Lintel, Open Back

(No continuous base plate)



Calculated ψ -values

	Inner leaf blockwork
	Aircrete Block $\lambda = 0.19 \text{ W/mK}$
Cavity Insulation	ψ -value W/mK
100mm $\lambda=0.037$	0.291
150mm $\lambda=0.037$	0.290
100mm $\lambda=0.032$	0.297
150mm $\lambda=0.032$	0.295

Points to Watch

- In certain situations, the lintel may also require fire resistance.
- A flexible sealant should be used between all interfaces of the internal air barrier and the window / door frame members.
- Cavity should be closed with a proprietary cavity closer or block of insulation.
- Ensure the cavity closer is in contact with the insulation within the cavity and the window / door frame.
- Ensure cavities are kept clean of mortar snots and other debris during construction.
- Ensure that a 3mm thick lintel is available for the required opening width.