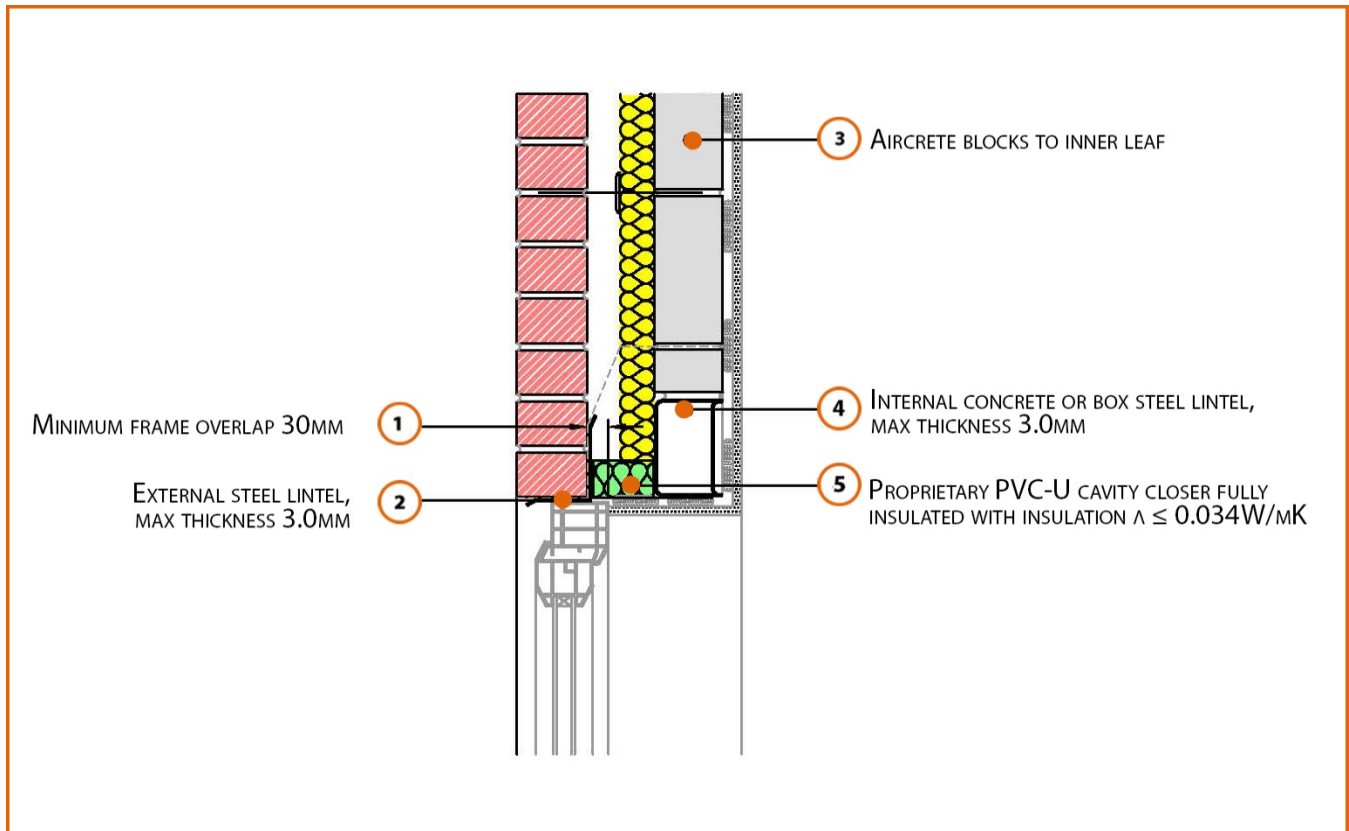


LABC Registered Construction Details Masonry



Registration Number: E2MCPF5



Build Up

External Masonry Cavity Wall

Masonry Outer Leaf ($\lambda = 0.77$)

100mm Aircrete Block Inner Leaf ($\lambda = 0.15 \text{ W/mK}$)

Partial Fill Insulation

Independent Lintel (Max 3.0mm)

Proprietary PVC-U Cavity Closer



Calculated ψ -values

	Inner leaf blockwork
	Aircrete Block $\lambda = 0.15 \text{ W/mK}$
Cavity Insulation	ψ -value W/mK
50mm $\lambda=0.022$	0.048
100mm $\lambda=0.022$	0.051

Points to Watch

- In certain situations, the lintel may also require fire resistance.
- A flexible sealant should be used between all interfaces of the internal air barrier and the window / door frame members.
- Cavity barriers around openings may be formed by the window or door frame if the frame is steel (0.5mm thick) or timber (38mm thick).
- Ensure the cavity closer is in contact with the insulation within the cavity and the window / door frame.
- Ensure cavities are kept clean of mortar snots and other debris during construction.
- Ensure that a 3mm thick lintel is available for the required opening width
- Cavity barriers may require an additional vertical DPC and/or cavity tray.
- Fire rated cavity barrier / closer may be required depending on position and type of window and construction of soffit