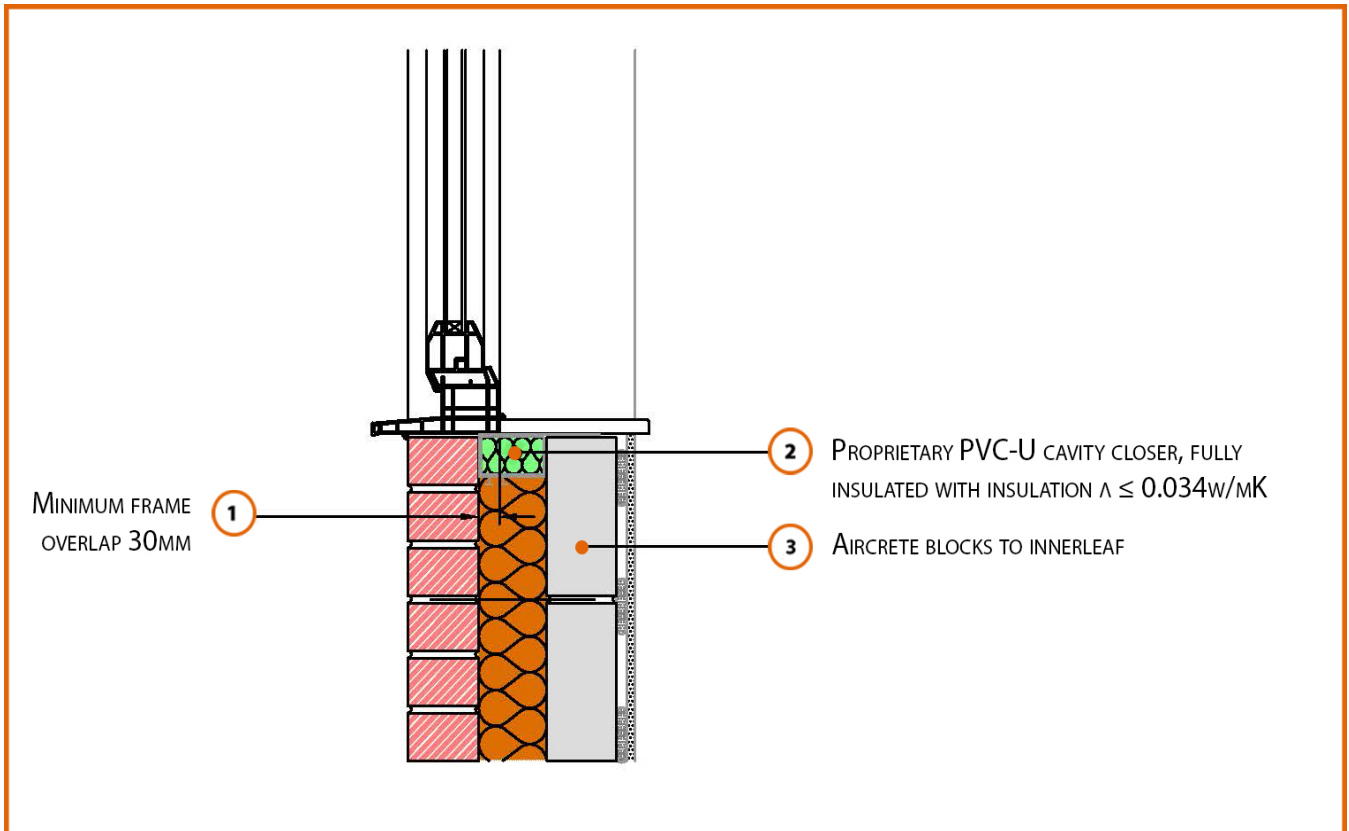


LABC Registered Construction Details

Masonry



Registration Number: E3MCFF4



Build Up

External Masonry Cavity Wall

Masonry Outer Leaf ($\lambda = 0.77$)

100mm Aircrete Block Inner Leaf ($\lambda = 0.11 \text{ W/mK}$)

Full Fill Insulation

Window Sill



Calculated ψ -values

| | Inner leaf blockwork |
|-----------------------|--------------------------------------|
| | Aircrete Block $\lambda = 0.11$ W/mK |
| Cavity Insulation | ψ -value W/mK |
| 100mm $\lambda=0.037$ | 0.027 |
| 150mm $\lambda=0.037$ | 0.033 |
| 100mm $\lambda=0.032$ | 0.028 |
| 150mm $\lambda=0.032$ | 0.034 |

Points to Watch

- Cavity should be closed with a proprietary cavity closer or block of insulation
- Ensure the cavity closer is in contact with the insulation within the cavity and the window / door frame.
- Ensure cavities are kept clean of mortar snots and other debris during construction
- A flexible sealant should be applied to the junction between the plaster/ plasterboard, sill board and window frame member
- Sealant should be added to the front and back of the sill board
- Ensure that the damp proof course is correctly positioned.