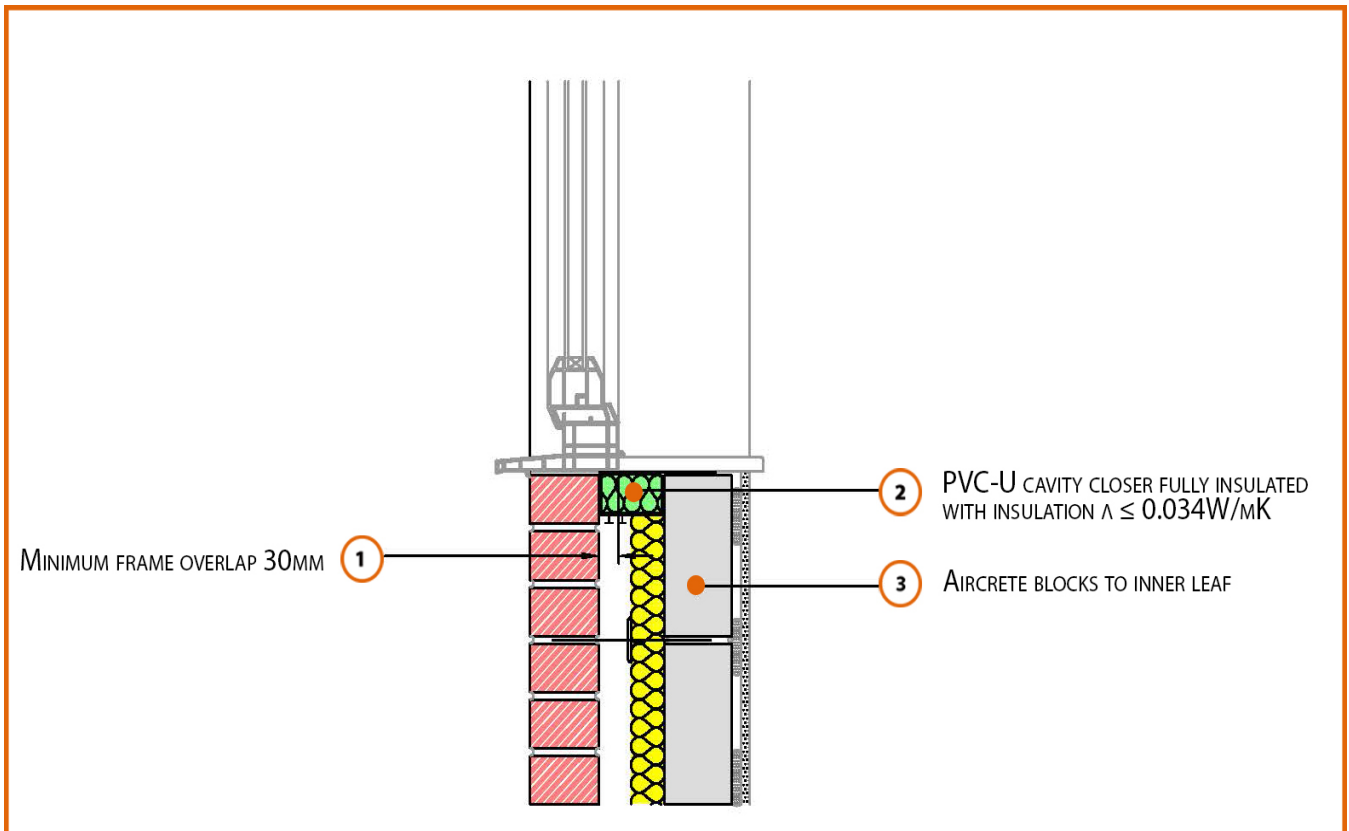


LABC Registered Construction Details

Masonry



Registration Number: E3MCPF4



Build Up

External Masonry Cavity Wall

Masonry Outer Leaf ($\lambda = 0.77$)

100mm Aircrete Block Inner Leaf ($\lambda = 0.11 \text{ W/mK}$)

Partial Fill Insulation

Window Sill



Calculated ψ -values

	Inner leaf blockwork
	Aircrete Block $\lambda = 0.11$ W/mK
Cavity Insulation	ψ -value W/mK
50mm $\lambda=0.022$	0.034
100mm $\lambda=0.022$	0.042

Points to Watch

- Cavity barriers around openings may be formed by the window or door frame if the frame is steel (0.5mm thick) or timber (38mm thick).
- Ensure the cavity closer is in contact with the insulation within the cavity and the window / door frame.
- Ensure cavities are kept clean of mortar snots and other debris during construction
- A flexible sealant should be applied to the junction between the plaster/ plasterboard, sill board and window frame member
- Sealant should be added to the front and back of the sill board
- Ensure that the damp proof course is correctly positioned.
- Cavity barriers may require an additional vertical DPC and/or cavity tray.
- Fire rated cavity barrier / closer may be required depending on position and type of window and thickness of window board