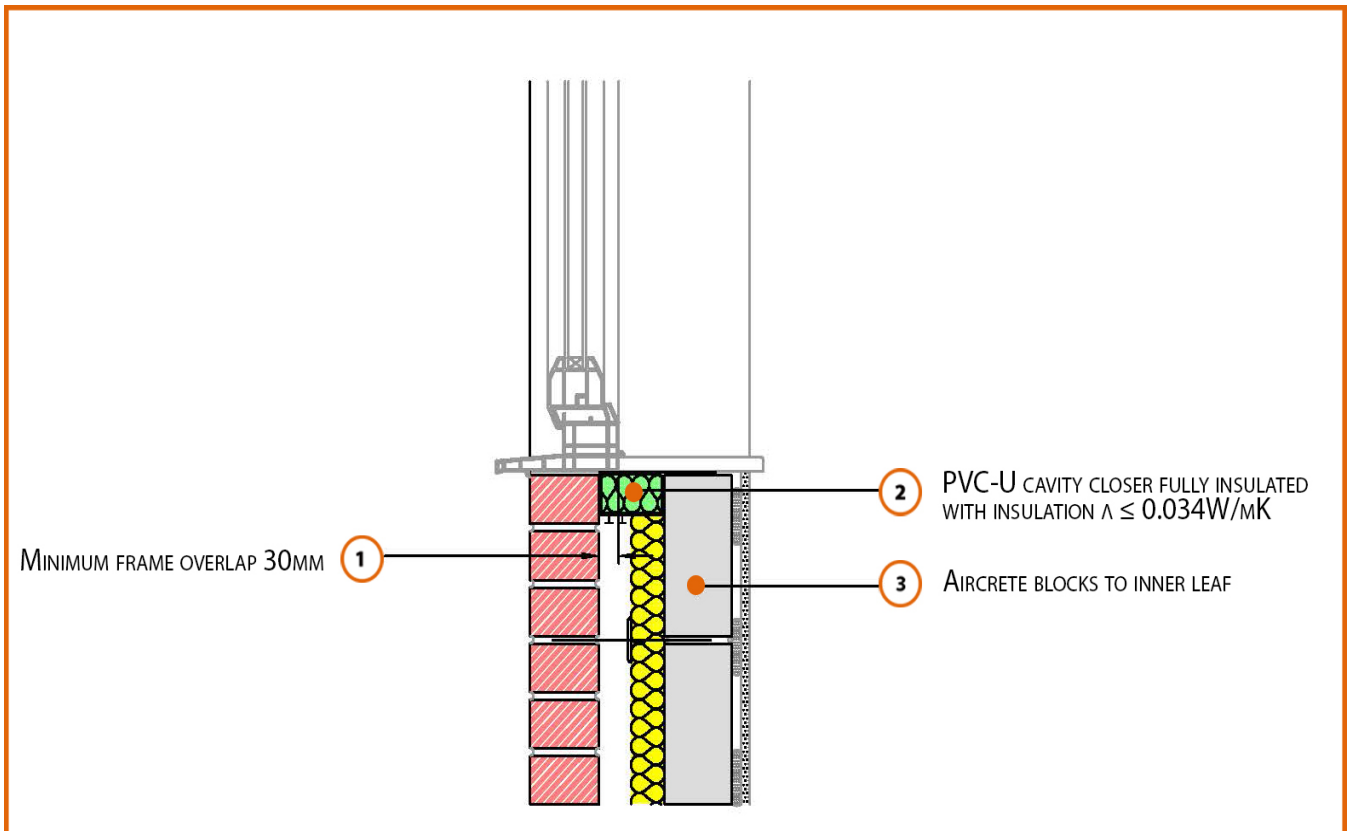


# LABC Registered Construction Details

## Masonry



Registration Number: E3MCPF6



### Build Up

External Masonry Cavity Wall

Masonry Outer Leaf ( $\lambda = 0.77$ )

100mm Aircrete Block Inner Leaf ( $\lambda = 0.19 W/mK$ )

Partial Fill Insulation

Window Sill



## Calculated $\psi$ -values

	Inner leaf blockwork
	Aircrete Block $\lambda = 0.19 \text{ W/mK}$
Cavity Insulation	$\psi$ -value $\text{W/mK}$
50mm $\lambda=0.022$	0.032
100mm $\lambda=0.022$	0.040

## Points to Watch

- Cavity barriers around openings may be formed by the window or door frame if the frame is steel (0.5mm thick) or timber (38mm thick).
- Ensure the cavity closer is in contact with the insulation within the cavity and the window / door frame.
- Ensure cavities are kept clean of mortar snots and other debris during construction
- A flexible sealant should be applied to the junction between the plaster/ plasterboard, sill board and window frame member
- Sealant should be added to the front and back of the sill board
- Ensure that the damp proof course is correctly positioned.
- Cavity barriers may require an additional vertical DPC and/or cavity tray.
- Fire rated cavity barrier / closer may be required depending on position and type of window and thickness of window board