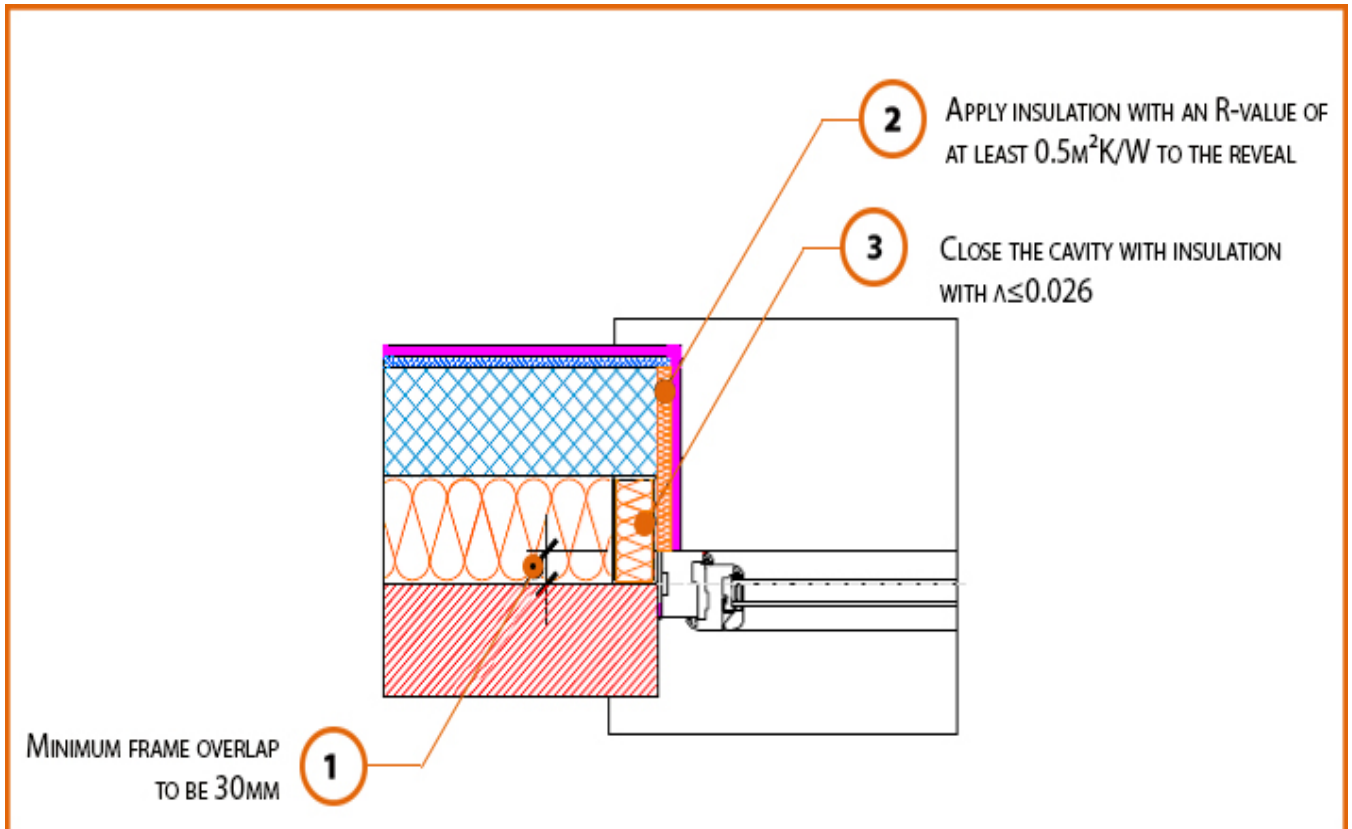


LABC Registered Construction Details

Masonry



Registration Number: E4MCFF1



Build Up

External Masonry Cavity Wall

Masonry Outer Leaf

Ultra Lightweight Concrete Block $\lambda \leq 0.28\text{ W/mK}$

Full Fill Insulation

Window Jamb



Calculated ψ -values

Cavity Insulation	Inner leaf blockwork
	Ultra Lightweight Concrete Block $\lambda \leq 0.28$ W/mK
	ψ -value W/mK
100mm $\lambda=0.037$	0.010
100mm $\lambda=0.032$	0.011
150mm $\lambda=0.037$	0.016
150mm $\lambda=0.032$	0.017

Points to Watch

- A flexible sealant should be used between all interfaces of the internal air barrier and the window / door frame members.
- Cavity should be closed with a proprietary cavity closer or block of insulation.
- Ensure the cavity closer is in contact with the insulation within the cavity and the window / door frame.
- Ensure cavities are kept clean of mortar snots and other debris during construction
- Ensure that the damp proof course is correctly positioned.
- This detail cannot be used if a checked reveal is proposed.