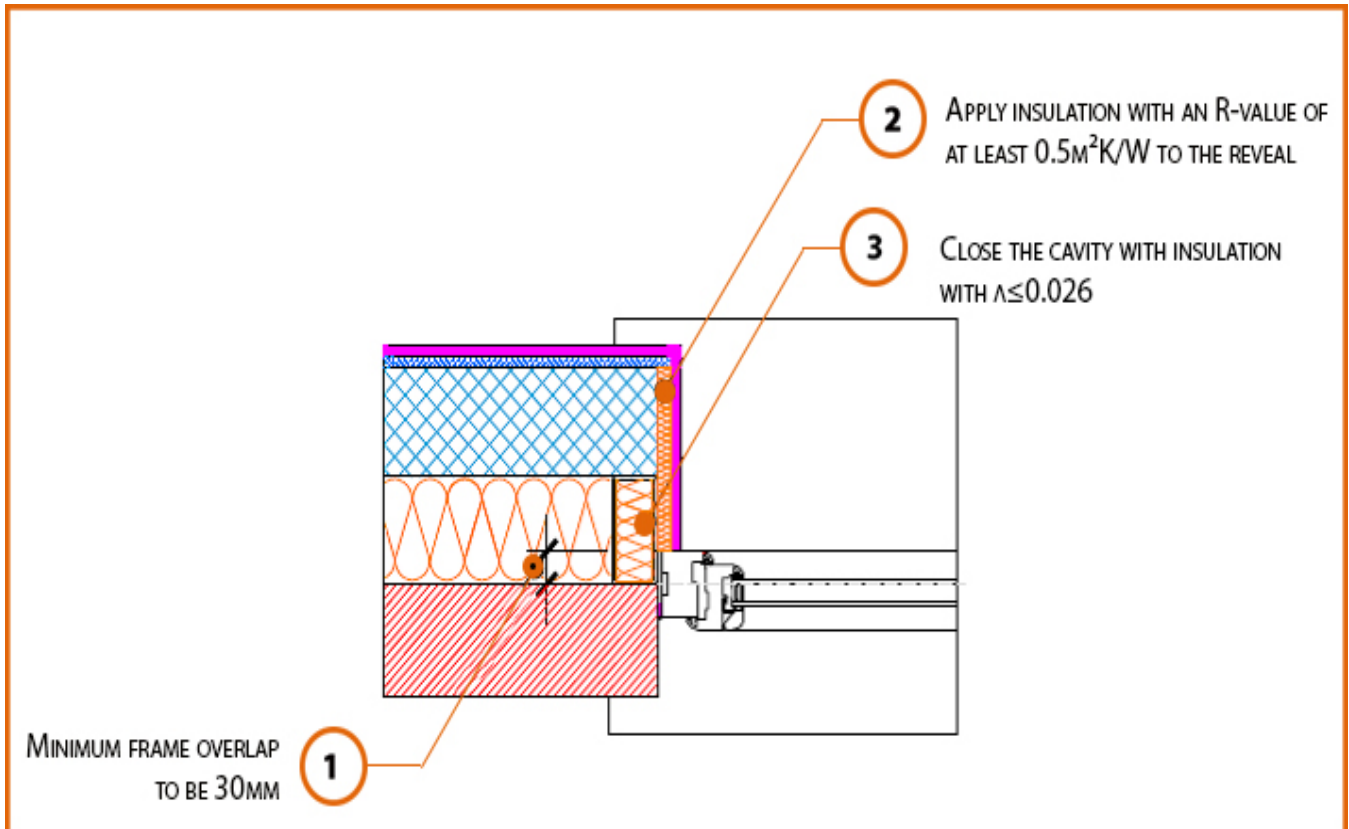


LABC Registered Construction Details Masonry



Registration Number: E4MCFF3



Build Up

External Masonry Cavity Wall

Masonry Outer Leaf

Dense Concrete Block $\lambda \leq 1.33\text{ W/mK}$

Full Fill Insulation

Window Jamb



Calculated ψ -values

| Cavity Insulation | Inner leaf blockwork | |
|-----------------------|--|---------|
| | Dense Concrete Block $\lambda \leq 1.33$ W/mK | |
| | ψ -value W/mK | f-value |
| 100mm $\lambda=0.037$ | 0.008 | 0.928 |
| 100mm $\lambda=0.032$ | 0.011 | 0.929 |
| 150mm $\lambda=0.037$ | 0.015 | 0.922 |
| 150mm $\lambda=0.032$ | 0.016 | 0.923 |

Points to Watch

- A flexible sealant should be used between all interfaces of the internal air barrier and the window / door frame members.
- Cavity should be closed with a proprietary cavity closer or block of insulation.
- Ensure the cavity closer is in contact with the insulation within the cavity and the window / door frame.
- Ensure cavities are kept clean of mortar snots and other debris during construction
- Ensure that the damp proof course is correctly positioned.
- This detail cannot be used if a checked reveal is proposed.

