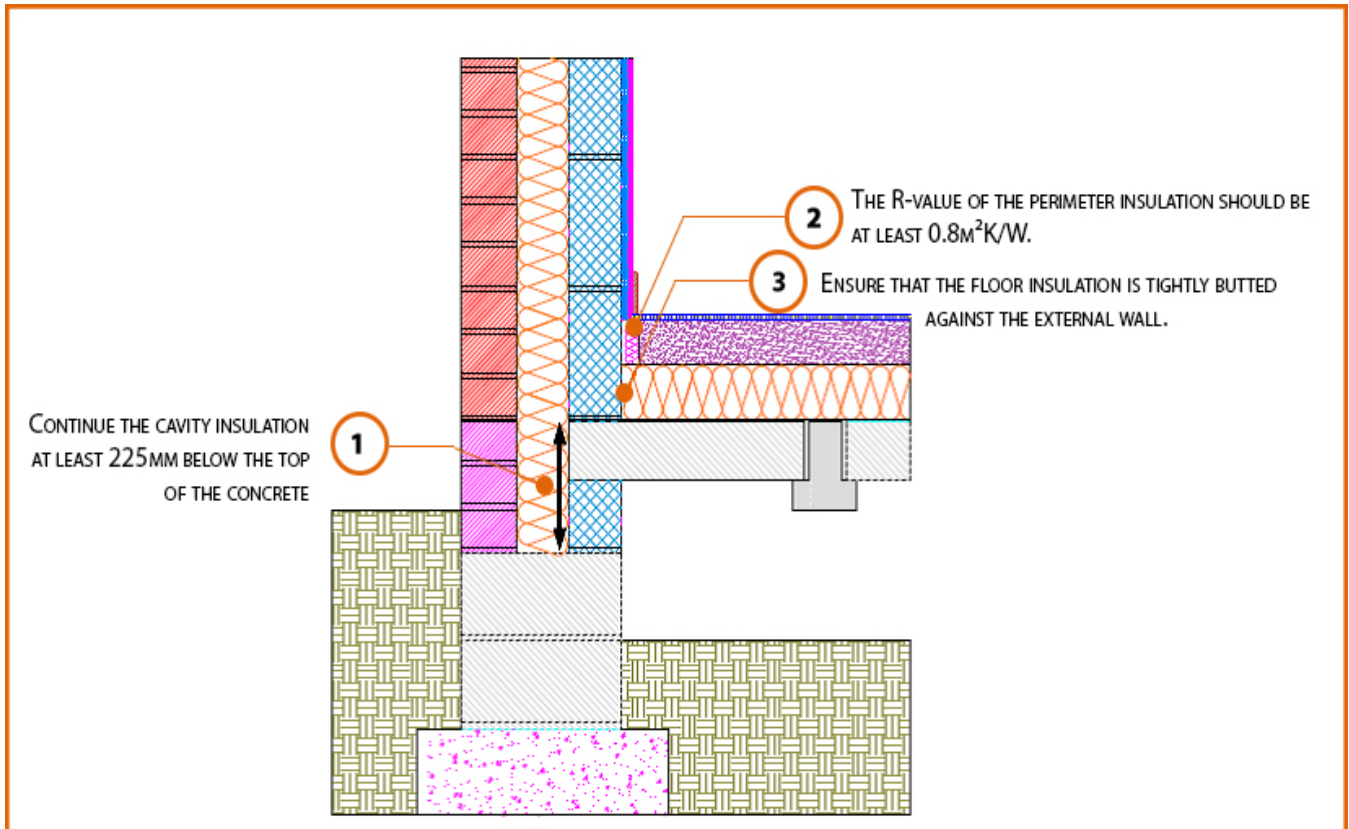


Registration Number: E5MCFF10



Build Up

External Masonry Cavity Wall

Masonry Outer Leaf ($\lambda = 0.77$)

Ultra Lightweight Concrete Block $\lambda \leq 0.28 \text{ W/mK}$

Beam and Block Floor

Dense Floor Block

150mm Insulation Below Screed (0.022W/Mk)

Calculated ψ -values

Cavity Insulation	Inner leaf blockwork
	Ultra Lightweight Concrete Block $\lambda \leq 0.28$ W/mK
	ψ -value W/mK
100mm $\lambda=0.037$	0.065
100mm $\lambda=0.032$	0.065
150mm $\lambda=0.037$	0.066
150mm $\lambda=0.032$	0.065

Points to Watch

- Ensure cavities are kept clean of mortar snots and other debris during construction
- Damp proof membrane / air barrier should be lapped to damp proof course and plaster stop bead.
- Any service penetrations through the damp proof membrane / air barrier should be suitably sealed.
- Sub floor ventilation to be in accordance with manufacturers recommendations. A cavity barrier type sleeve should be used through the cavity.
- The wall insulation installed must be considered fit for purpose below the wall dpc in relation to water absorption.