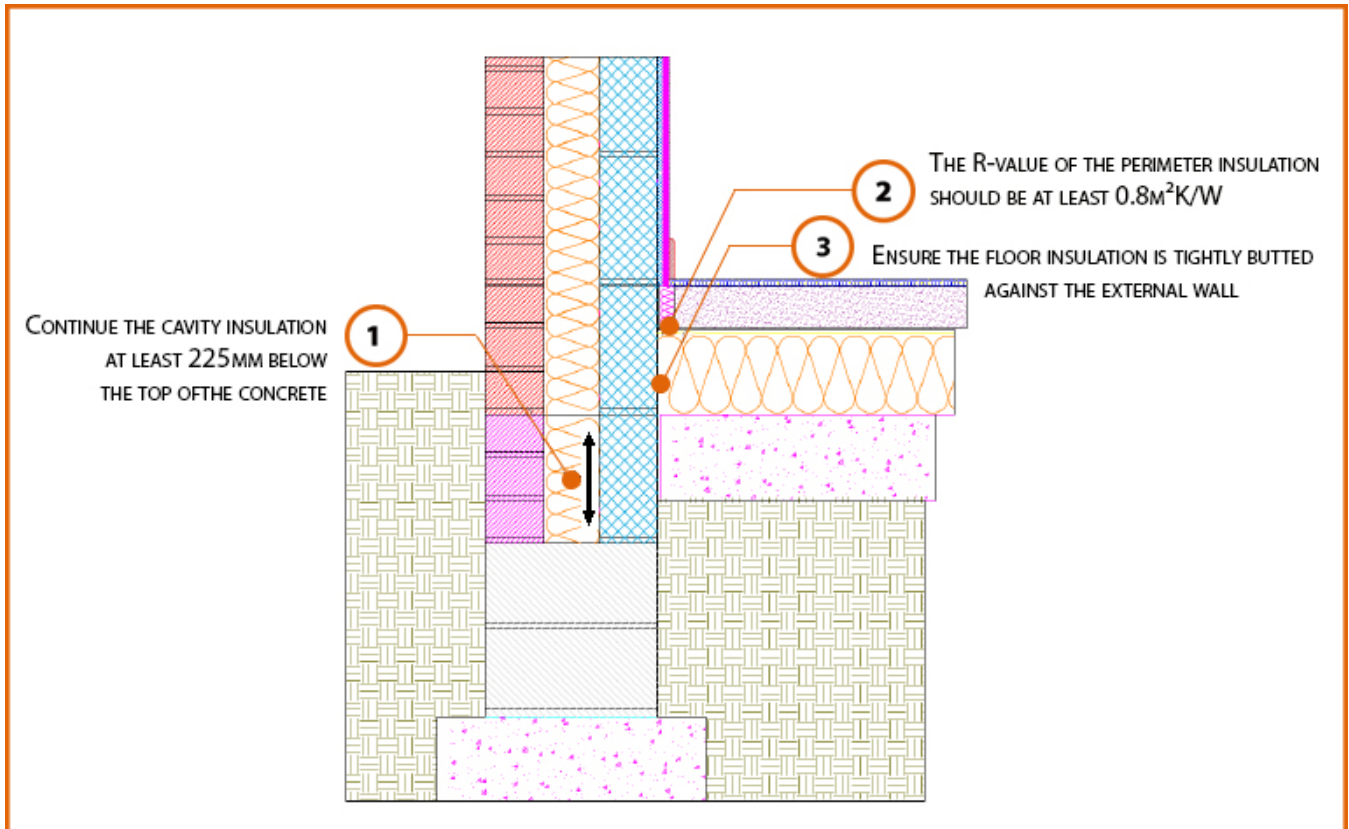


# LABC Registered Construction Details

## Masonry



Registration Number: E5MCFF14



### Build Up

External Masonry Cavity Wall

Masonry Outer Leaf ( $\lambda = 0.77$ )

Lightweight Concrete Block  $\lambda \leq 0.60 \text{ W/mK}$

Full Fill Insulation

Ground Floor – 100mm Slab

100mm Insulation ( $0.022\text{W/Mk}$ ) Below 75mm Screed



## Calculated $\psi$ -values

| Cavity Insulation     | Inner leaf blockwork                                |
|-----------------------|---|
|                       | Lightweight Concrete Block $\lambda \leq 0.60$ W/mK |
|                       | $\psi$ -value W/mK                                  |
| 100mm $\lambda=0.037$ | 0.097   |
| 100mm $\lambda=0.032$ | 0.097   |
| 150mm $\lambda=0.037$ | 0.097   |
| 150mm $\lambda=0.032$ | 0.097   |

## Points to Watch

- Ensure cavities are kept clean of mortar snots and other debris during construction
- Damp proof membrane / air barrier should be lapped to damp proof course and plaster stop bead.
- Any service penetrations through the damp proof membrane / air barrier should be suitably sealed.
- The wall insulation installed must be considered fit for purpose below the wall dpc in relation to water absorption.