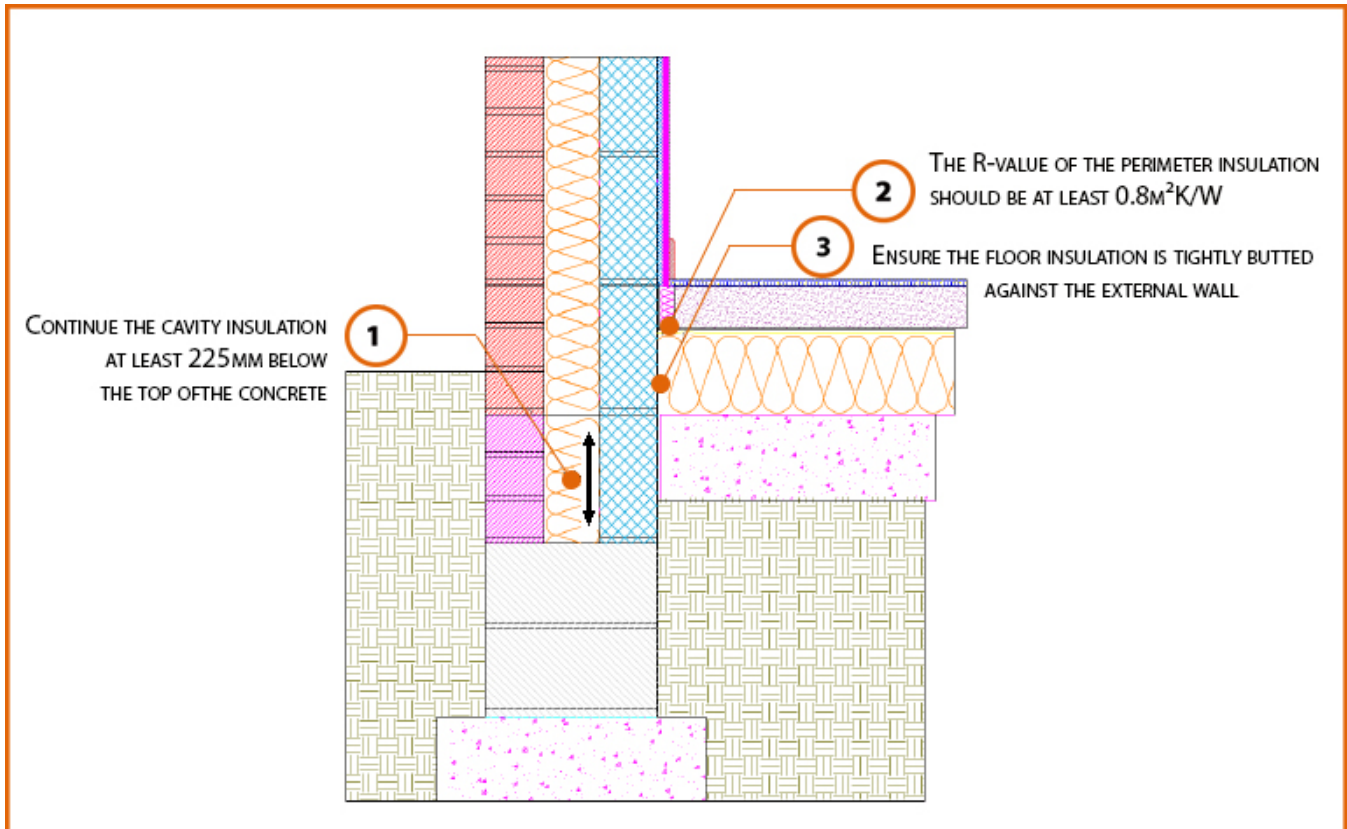


LABC Registered Construction Details Masonry



Registration Number: E5MCFF15



Build Up

External Masonry Cavity Wall

Masonry Outer Leaf ($\lambda = 0.77$)

Dense Concrete Block $\lambda \leq 1.33 \text{ W/mK}$

Full Fill Insulation

Ground Floor – 100mm Slab

100mm Insulation (0.022 W/mK) Below 75mm Screed



Calculated ψ -values

	Inner leaf blockwork
	Dense Concrete Block $\lambda \leq 1.33$ W/mK
Cavity Insulation	ψ -value W/mK
100mm $\lambda=0.037$	0.159
100mm $\lambda=0.032$	0.160
150mm $\lambda=0.037$	0.162
150mm $\lambda=0.032$	0.164

Points to Watch

- Ensure cavities are kept clean of mortar snots and other debris during construction
- Damp proof membrane / air barrier should be lapped to damp proof course and plaster stop bead.
- Any service penetrations through the damp proof membrane / air barrier should be suitably sealed.
- The wall insulation installed must be considered fit for purpose below the wall dpc in relation to water absorption.