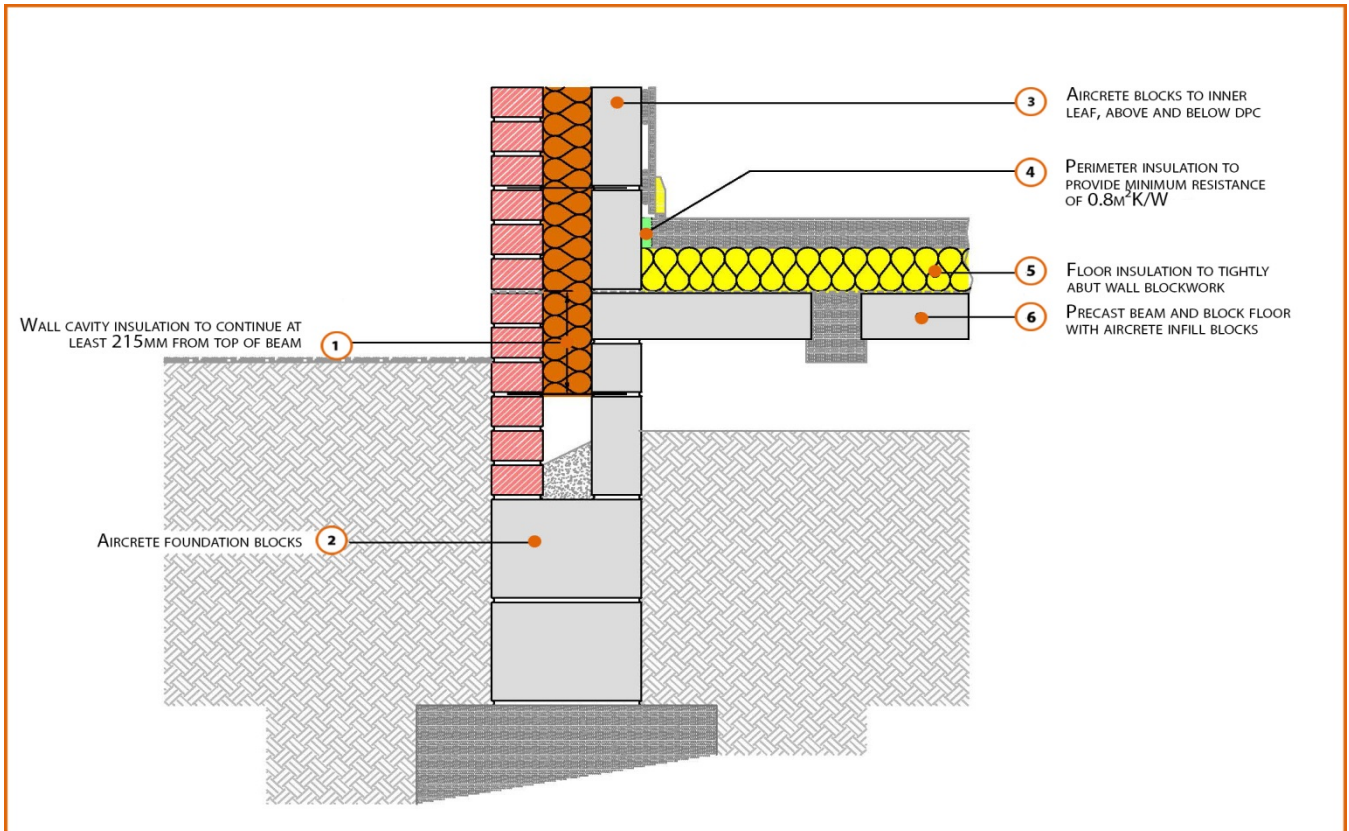


# LABC Registered Construction Details

## Masonry



Registration Number: E5MCFF16



### Build Up

External Masonry Cavity Wall

Masonry Outer Leaf ( $\lambda = 0.77$ )

100mm Aircrete Block Inner Leaf ( $\lambda = 0.11$  W/mK)

Full Fill Insulation

150mm Beam and Aircrete Block Infill

100mm Insulation Above Slab (0.022W/mK)

75mm Screed



## Calculated $\psi$ -values

	Inner leaf blockwork
	Aircrete Block $\lambda = 0.11$ W/mK
Cavity Insulation	$\psi$ -value W/mK
100mm $\lambda=0.037$	0.043
150mm $\lambda=0.037$	0.042
100mm $\lambda=0.032$	0.042
150mm $\lambda=0.032$	0.041

## Points to Watch

- Ensure cavities are kept clean of mortar snots and other debris during construction
- Damp proof membrane / air barrier should be lapped to damp proof course and plaster stop bead.
- Any service penetrations through the damp proof membrane / air barrier should be suitably sealed.
- Sub floor ventilation to be in accordance with manufacturers recommendations. A cavity barrier type sleeve should be used through the cavity.
- The wall insulation installed must be considered fit for purpose below the wall dpc in relation to water absorption.