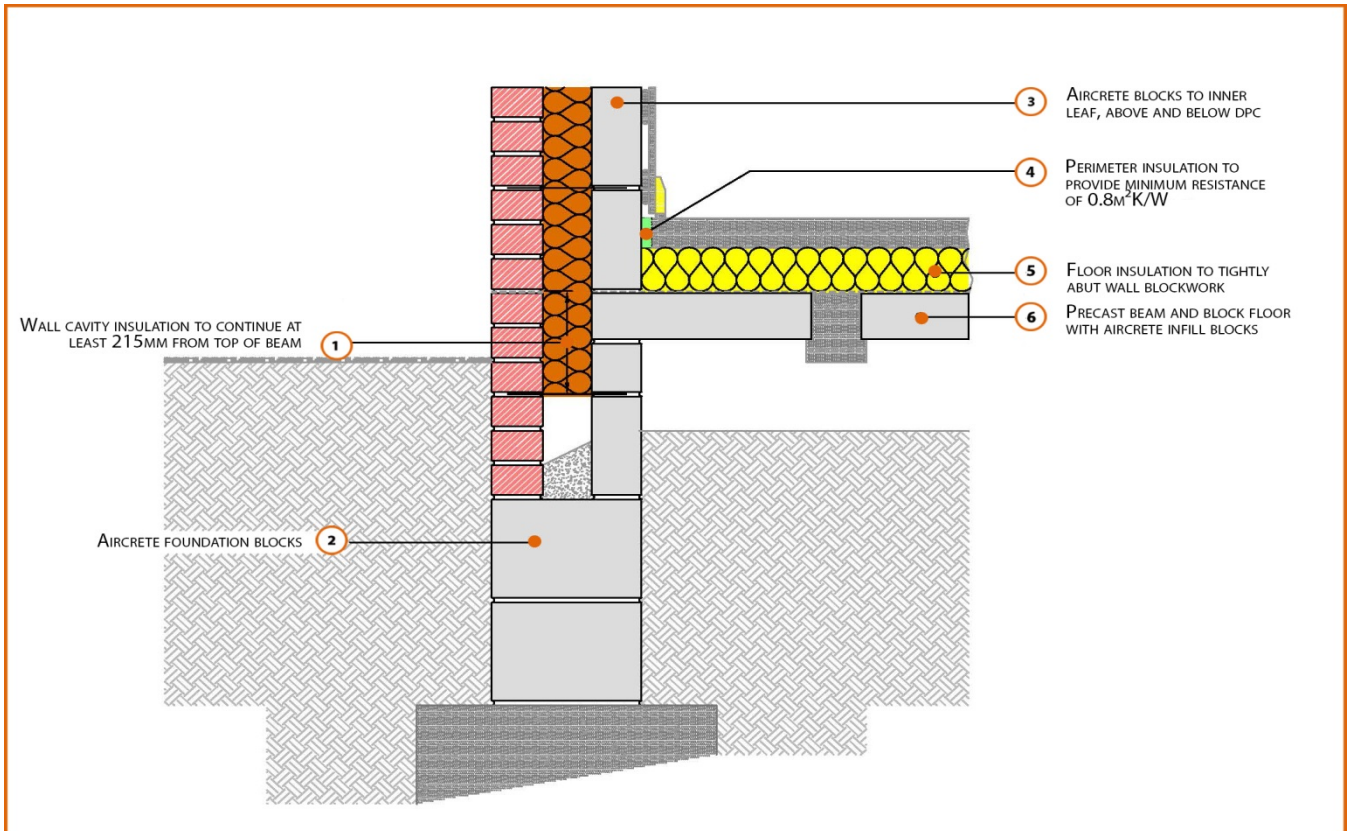


# LABC Registered Construction Details

## Masonry



Registration Number: E5MCFF17



### Build Up

External Masonry Cavity Wall

Masonry Outer Leaf ( $\lambda = 0.77$ )

100mm Aircrete Block Inner Leaf ( $\lambda = 0.15$  W/mK)

Full Fill Insulation

150mm Beam and Aircrete Block Infill

100mm Insulation Above Slab (0.022W/mK)

75mm Screed



## Calculated $\psi$ -values

Cavity Insulation	Inner leaf blockwork
	Aircrete Block $\lambda = 0.15$ W/mK
	$\psi$ -value W/mK
100mm $\lambda=0.037$	0.050
150mm $\lambda=0.037$	0.049
100mm $\lambda=0.032$	0.049
150mm $\lambda=0.032$	0.048

## Points to Watch

- Ensure cavities are kept clean of mortar snots and other debris during construction
- Damp proof membrane / air barrier should be lapped to damp proof course and plaster stop bead.
- Any service penetrations through the damp proof membrane / air barrier should be suitably sealed.
- Sub floor ventilation to be in accordance with manufacturers recommendations. A cavity barrier type sleeve should be used through the cavity.
- The wall insulation installed must be considered fit for purpose below the wall dpc in relation to water absorption.