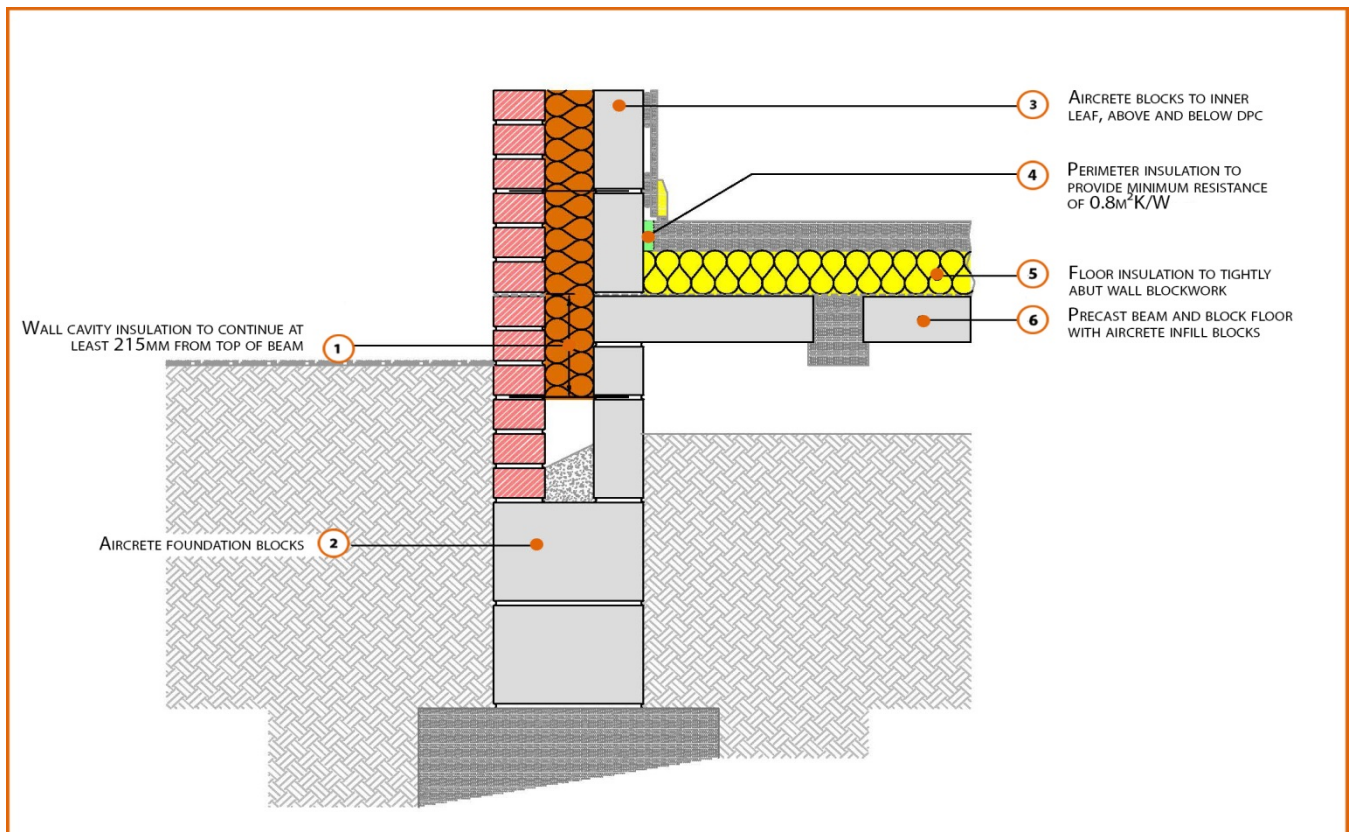


# LABC Registered Construction Details Masonry



Registration Number: E5MCFF18



## Build Up

External Masonry Cavity Wall

Masonry Outer Leaf ( $\lambda = 0.77$ )

100mm Aircrete Block Inner Leaf ( $\lambda = 0.19 \text{ W/mK}$ )

Full Fill Insulation

150mm Beam and Aircrete Block Infill

100mm Insulation Above Slab ( $0.022 \text{ W/mK}$ )

75mm Screed



## Calculated $\psi$ -values

|                       | Inner leaf blockwork                         |
|-----------------------|--|
|                       | Aircrete Block $\lambda = 0.19 \text{ W/mK}$ |
| Cavity Insulation     | $\psi$ -value $\text{W/mK}$                  |
| 100mm $\lambda=0.037$ | 0.064  |
| 150mm $\lambda=0.037$ | 0.063  |
| 100mm $\lambda=0.032$ | 0.062  |
| 150mm $\lambda=0.032$ | 0.062  |

## Points to Watch

- Ensure cavities are kept clean of mortar snots and other debris during construction
- Damp proof membrane / air barrier should be lapped to damp proof course and plaster stop bead.
- Any service penetrations through the damp proof membrane / air barrier should be suitably sealed.
- Sub floor ventilation to be in accordance with manufacturers recommendations. A cavity barrier type sleeve should be used through the cavity.
- The wall insulation installed must be considered fit for purpose below the wall dpc in relation to water absorption.