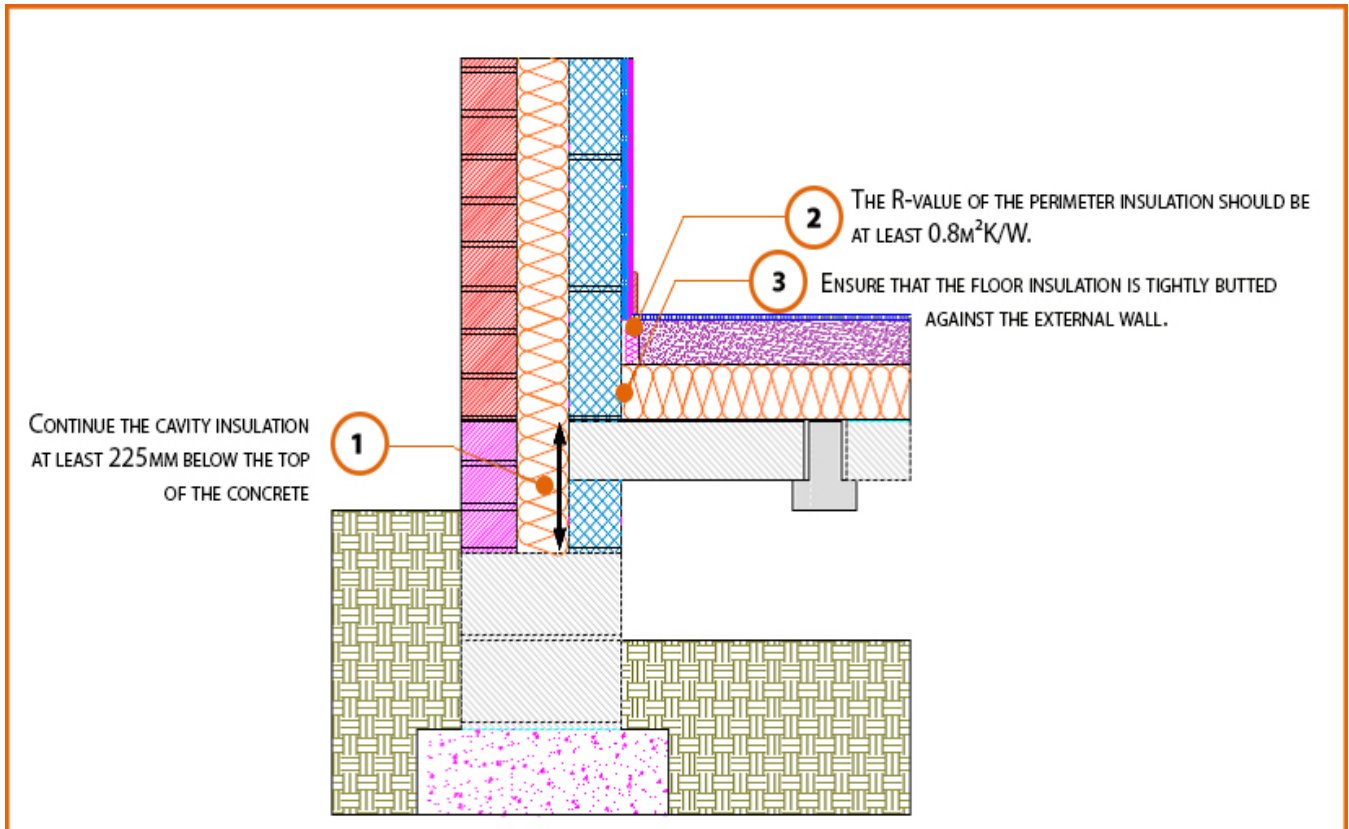


## Registration Number: E5MCFF1



### Build Up

External Masonry Cavity Wall

Masonry Outer Leaf ( $\lambda = 0.77$ )

Ultra Lightweight Concrete Block  $\lambda \leq 0.28 \text{ W/mK}$

Beam and Block Floor

Lightweight Floor Block

100mm Insulation Below Screed ( $0.022\text{W/Mk}$ )

## Calculated $\psi$ -values

Cavity Insulation	Inner leaf blockwork
	Ultra Lightweight Concrete Block $\lambda \leq 0.28$ W/mK
	$\psi$ -value W/mK
100mm $\lambda=0.037$	0.056
100mm $\lambda=0.032$	0.056
150mm $\lambda=0.037$	0.057
150mm $\lambda=0.032$	0.057

## Points to Watch

- Ensure cavities are kept clean of mortar snots and other debris during construction
- Damp proof membrane / air barrier should be lapped to damp proof course and plaster stop bead.
- Any service penetrations through the damp proof membrane / air barrier should be suitably sealed.
- Sub floor ventilation to be in accordance with manufacturers recommendations. A cavity barrier type sleeve should be used through the cavity.
- The wall insulation installed must be considered fit for purpose below the wall dpc in relation to water absorption.