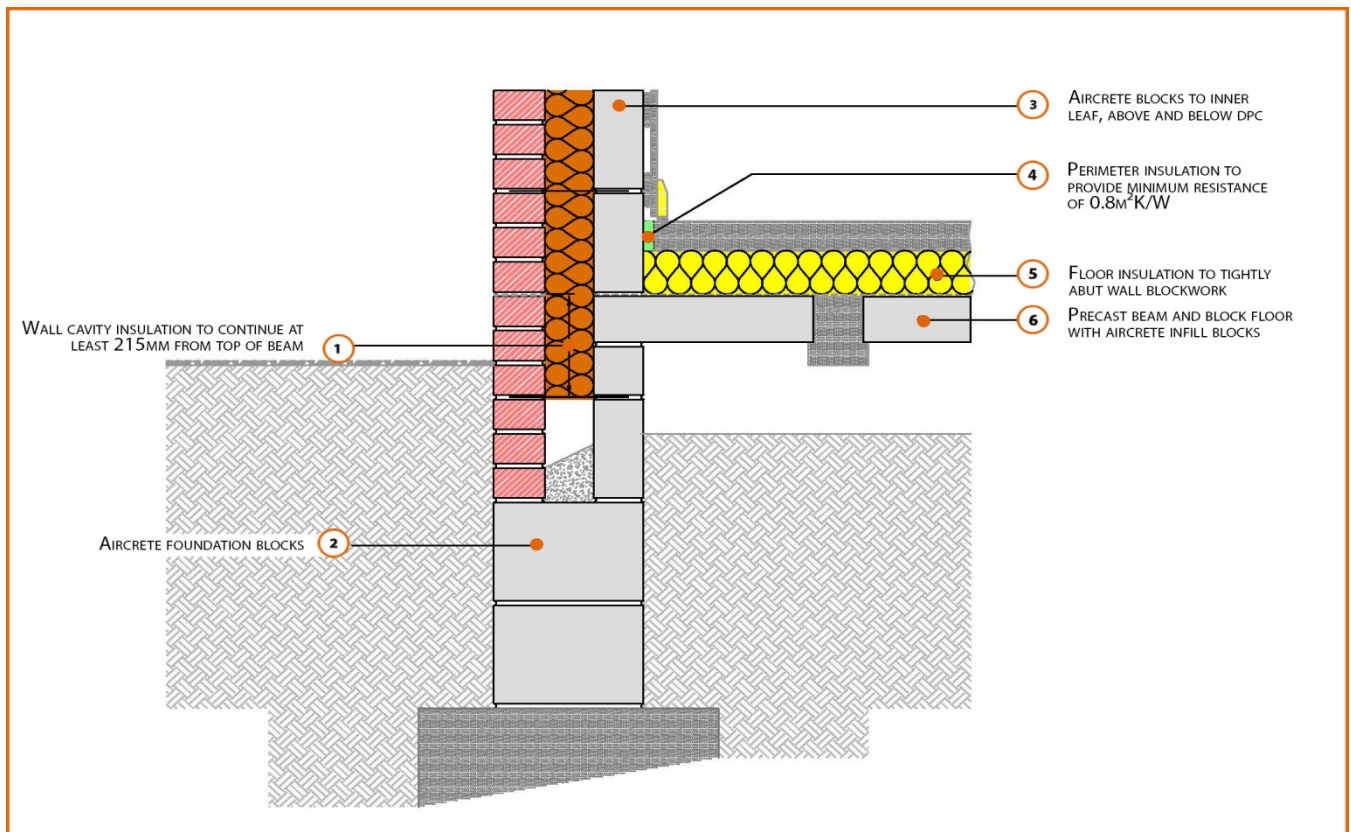


LABC Registered Construction Details

Masonry



Registration Number: E5MCFF21



Build Up

External Masonry Cavity Wall

Masonry Outer Leaf ($\lambda = 0.77$)

100mm Aircrete Block Inner Leaf ($\lambda = 0.19 \text{ W/mK}$)

Full Fill Insulation

150mm Beam and Aircrete Block Infill

150mm Insulation Above Slab (0.022W/mK)

75mm Screed



Calculated ψ -values

	Inner leaf blockwork
	Aircrete Block $\lambda = 0.19$ W/mK
Cavity Insulation	ψ -value W/mK
100mm $\lambda=0.037$	0.060
150mm $\lambda=0.037$	0.058
100mm $\lambda=0.032$	0.058
150mm $\lambda=0.032$	0.057

Points to Watch

- Ensure cavities are kept clean of mortar snots and other debris during construction
- Damp proof membrane / air barrier should be lapped to damp proof course and plaster stop bead.
- Any service penetrations through the damp proof membrane / air barrier should be suitably sealed.
- Sub floor ventilation to be in accordance with manufacturers recommendations. A cavity barrier type sleeve should be used through the cavity.
- The wall insulation installed must be considered fit for purpose below the wall dpc in relation to water absorption.