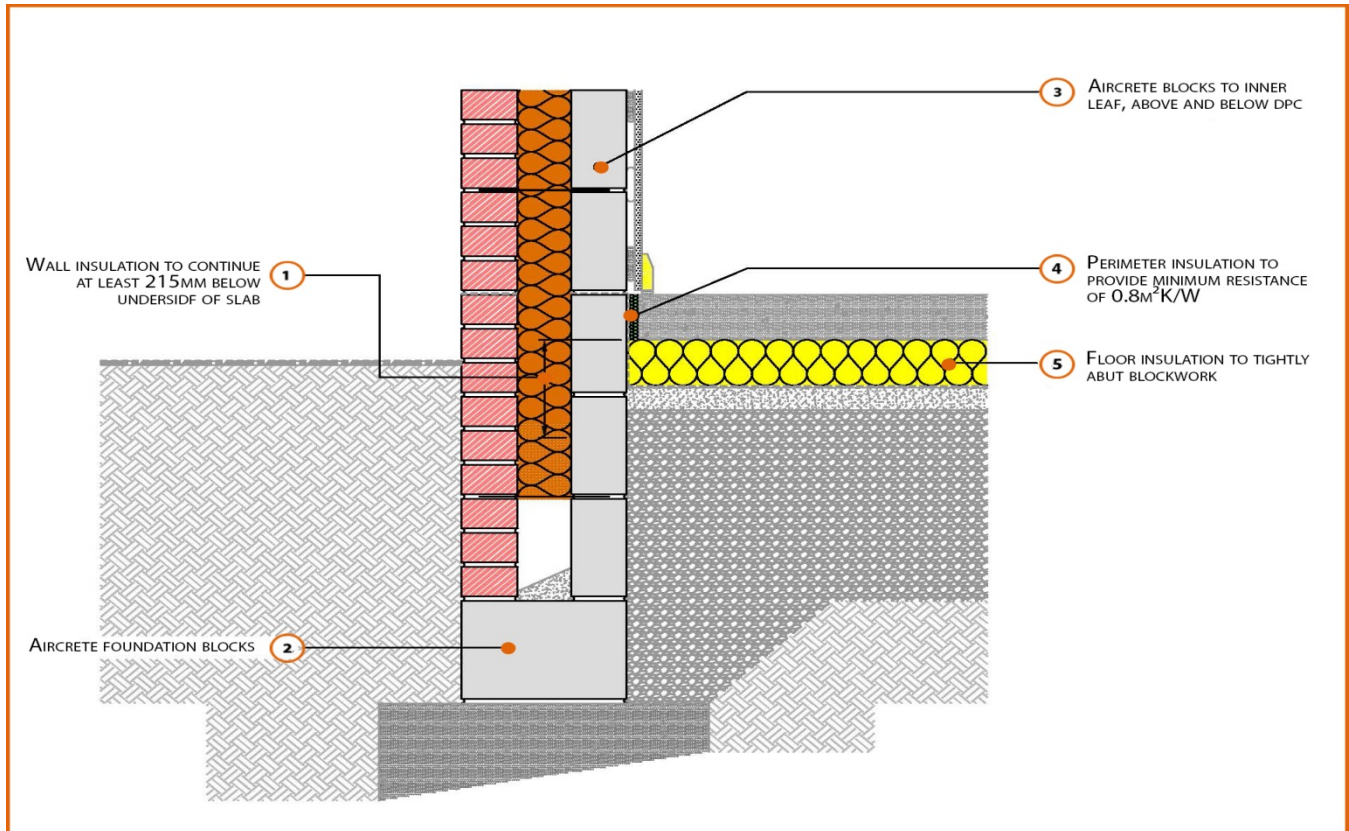


# LABC Registered Construction Details Masonry



Registration Number: E5MCFF22



## Build Up

External Masonry Cavity Wall

Masonry Outer Leaf ( $\lambda = 0.77$ )

100mm Aircrete Block Inner Leaf ( $\lambda = 0.11 \text{ W/mK}$ )

Full Fill Insulation

In Situ Ground Bearing Concrete Floor

100mm Insulation Below Slab ( $0.022 \text{ W/mK}$ )



## Calculated $\psi$ -values

	Inner leaf blockwork
	Aircrete Block $\lambda = 0.11 \text{ W/mK}$
Cavity Insulation	$\psi$ -value $\text{W/mK}$
100mm $\lambda=0.037$	0.080
150mm $\lambda=0.037$	0.070
100mm $\lambda=0.032$	0.077
150mm $\lambda=0.032$	0.068

## Points to Watch

- Ensure cavities are kept clean of mortar snots and other debris during construction
- Damp proof membrane / air barrier should be lapped to damp proof course and plaster stop bead.
- Any service penetrations through the damp proof membrane / air barrier should be suitably sealed.
- The wall insulation installed must be considered fit for purpose below the wall dpc in relation to water absorption.