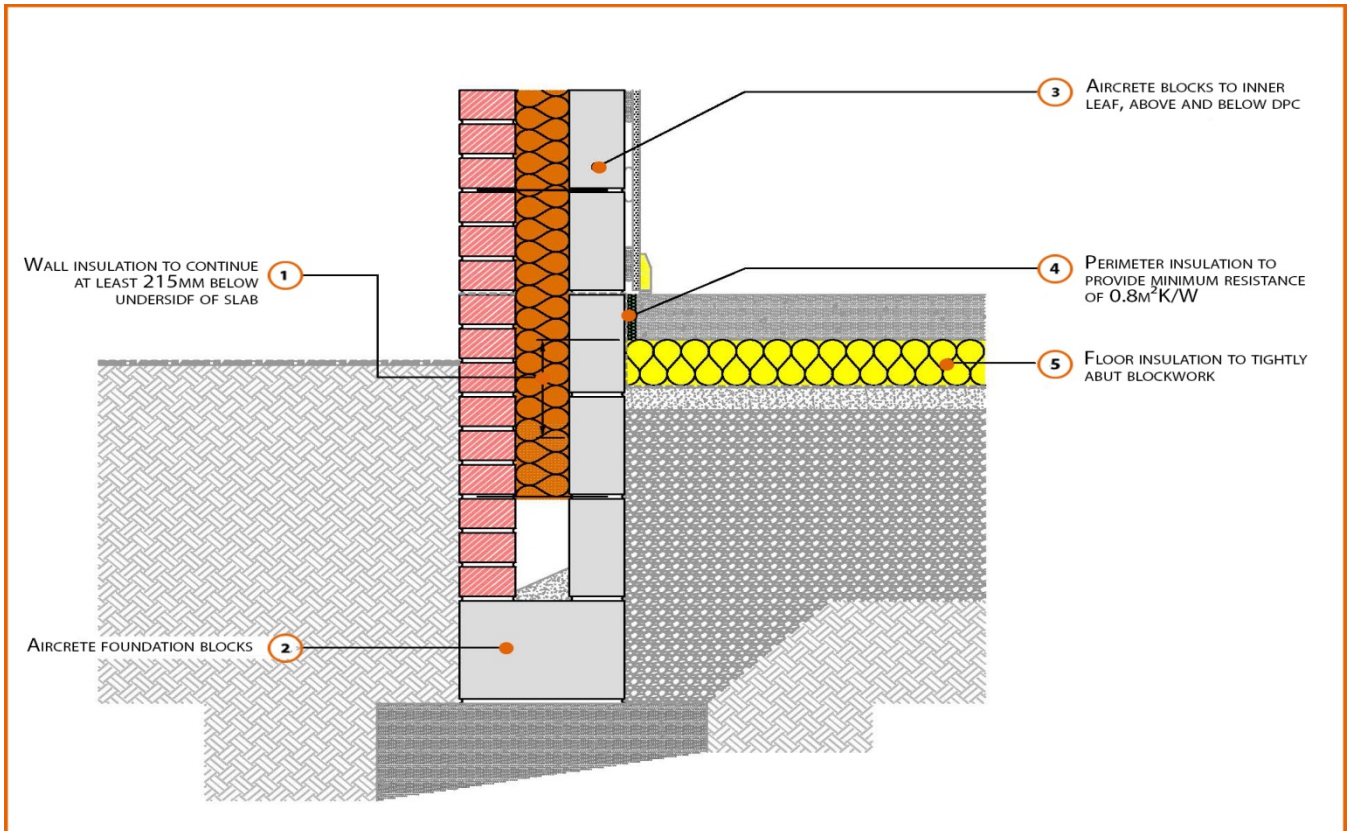


# LABC Registered Construction Details

## Masonry



Registration Number: E5MCFF24



### Build Up

External Masonry Cavity Wall

Masonry Outer Leaf ( $\lambda = 0.77$ )

100mm Aircrete Block Inner Leaf ( $\lambda = 0.19 \text{ W/mK}$ )

Full Fill Insulation

In Situ Ground Bearing Concrete Floor

100mm Insulation Below Slab ( $0.022 \text{ W/mK}$ )



## Calculated $\psi$ -values

Cavity Insulation	Inner leaf blockwork
	Aircrete Block $\lambda = 0.19$ W/mK
	$\psi$ -value W/mK
100mm $\lambda=0.037$	0.095
150mm $\lambda=0.037$	0.086
100mm $\lambda=0.032$	0.092
150mm $\lambda=0.032$	0.083

## Points to Watch

- Ensure cavities are kept clean of mortar snots and other debris during construction
- Damp proof membrane / air barrier should be lapped to damp proof course and plaster stop bead.
- Any service penetrations through the damp proof membrane / air barrier should be suitably sealed.
- The wall insulation installed must be considered fit for purpose below the wall dpc in relation to water absorption.