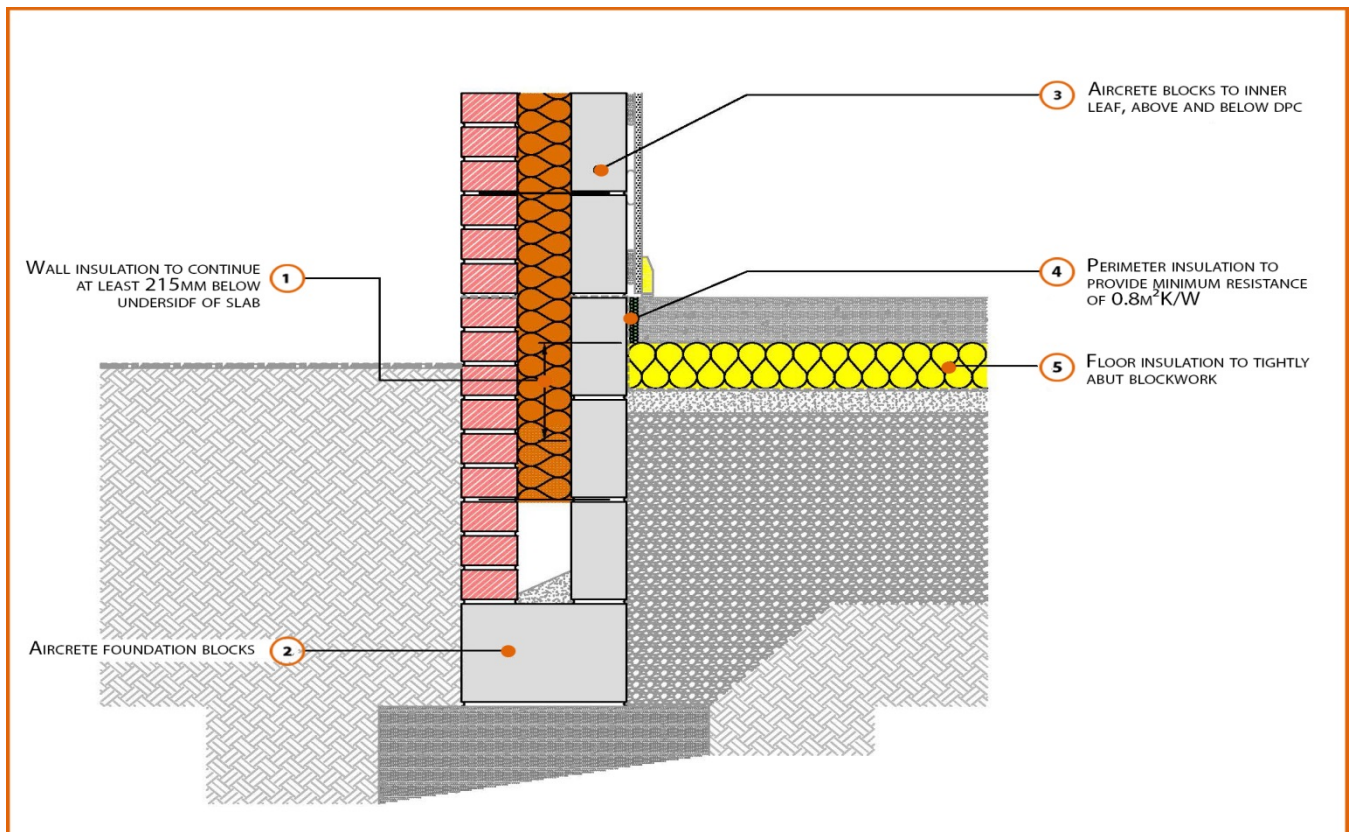


Registration Number: E5MCFF25



Build Up

External Masonry Cavity Wall

Masonry Outer Leaf ($\lambda = 0.77$)

100mm Aircrete Block Inner Leaf ($\lambda = 0.11$ W/mK)

Full Fill Insulation

In Situ Ground Bearing Concrete Floor

150mm Insulation Below Slab (0.022W/mK)

Calculated ψ -values

Cavity Insulation	Inner leaf blockwork
	Aircrete Block $\lambda = 0.11$ W/mK
	ψ -value W/mK
100mm $\lambda=0.037$	0.078
150mm $\lambda=0.037$	0.069
100mm $\lambda=0.032$	0.075
150mm $\lambda=0.032$	0.067

Points to Watch

- Ensure cavities are kept clean of mortar snots and other debris during construction
- Damp proof membrane / air barrier should be lapped to damp proof course and plaster stop bead.
- Any service penetrations through the damp proof membrane / air barrier should be suitably sealed.
- The wall insulation installed must be considered fit for purpose below the wall dpc in relation to water absorption.