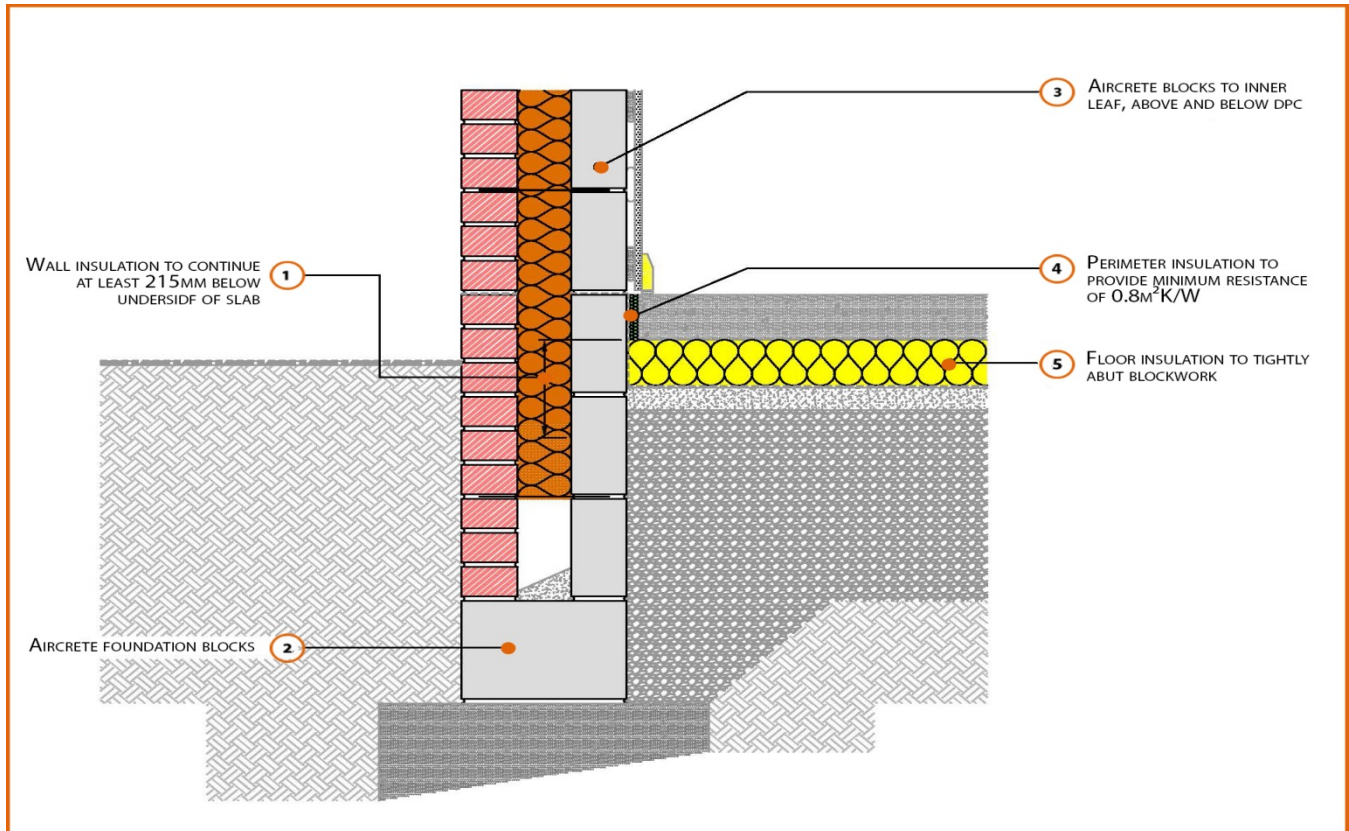


LABC Registered Construction Details Masonry



Registration Number: E5MCFF27



Build Up

External Masonry Cavity Wall

Masonry Outer Leaf ($\lambda = 0.77$)

100mm Aircrete Block Inner Leaf ($\lambda = 0.19 \text{ W/mK}$)

Full Fill Insulation

In Situ Ground Bearing Concrete Floor

150mm Insulation Below Slab (0.022 W/mK)



Calculated ψ -values

	Inner leaf blockwork
	Aircrete Block $\lambda = 0.19 \text{ W/mK}$
Cavity Insulation	ψ -value W/mK
100mm $\lambda=0.037$	0.094
150mm $\lambda=0.037$	0.086
100mm $\lambda=0.032$	0.091
150mm $\lambda=0.032$	0.083

Points to Watch

- Ensure cavities are kept clean of mortar snots and other debris during construction
- Damp proof membrane / air barrier should be lapped to damp proof course and plaster stop bead.
- Any service penetrations through the damp proof membrane / air barrier should be suitably sealed.
- The wall insulation installed must be considered fit for purpose below the wall dpc in relation to water absorption.