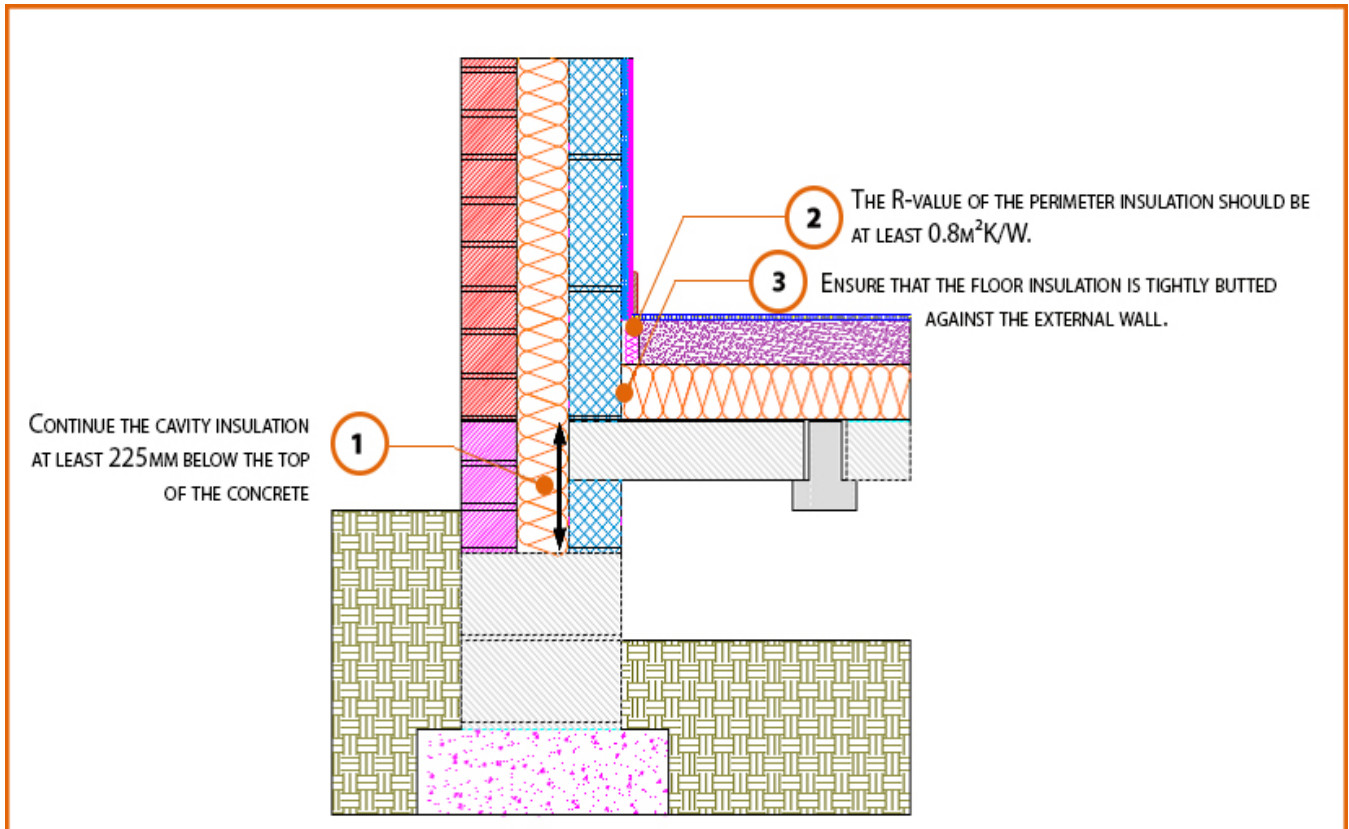


## Registration Number: E5MCFF2



### Build Up

External Masonry Cavity Wall

Masonry Outer Leaf ( $\lambda = 0.77$ )

Lightweight Concrete Block  $\lambda \leq 0.60$  W/mK

Beam and Block Floor

Lightweight Floor Block

100mm Insulation Below Screed (0.022W/Mk)

## Calculated $\psi$ -values

Cavity Insulation	Inner leaf blockwork
	Lightweight Concrete Block $\lambda \leq 0.60$ W/mK
	$\psi$ -value W/mK
100mm $\lambda=0.037$	0.091
100mm $\lambda=0.032$	0.092
150mm $\lambda=0.037$	0.094
150mm $\lambda=0.032$	0.094

## Points to Watch

- Ensure cavities are kept clean of mortar snots and other debris during construction
- Damp proof membrane / air barrier should be lapped to damp proof course and plaster stop bead.
- Any service penetrations through the damp proof membrane / air barrier should be suitably sealed.
- Sub floor ventilation to be in accordance with manufacturers recommendations. A cavity barrier type sleeve should be used through the cavity.
- The wall insulation installed must be considered fit for purpose below the wall dpc in relation to water absorption.