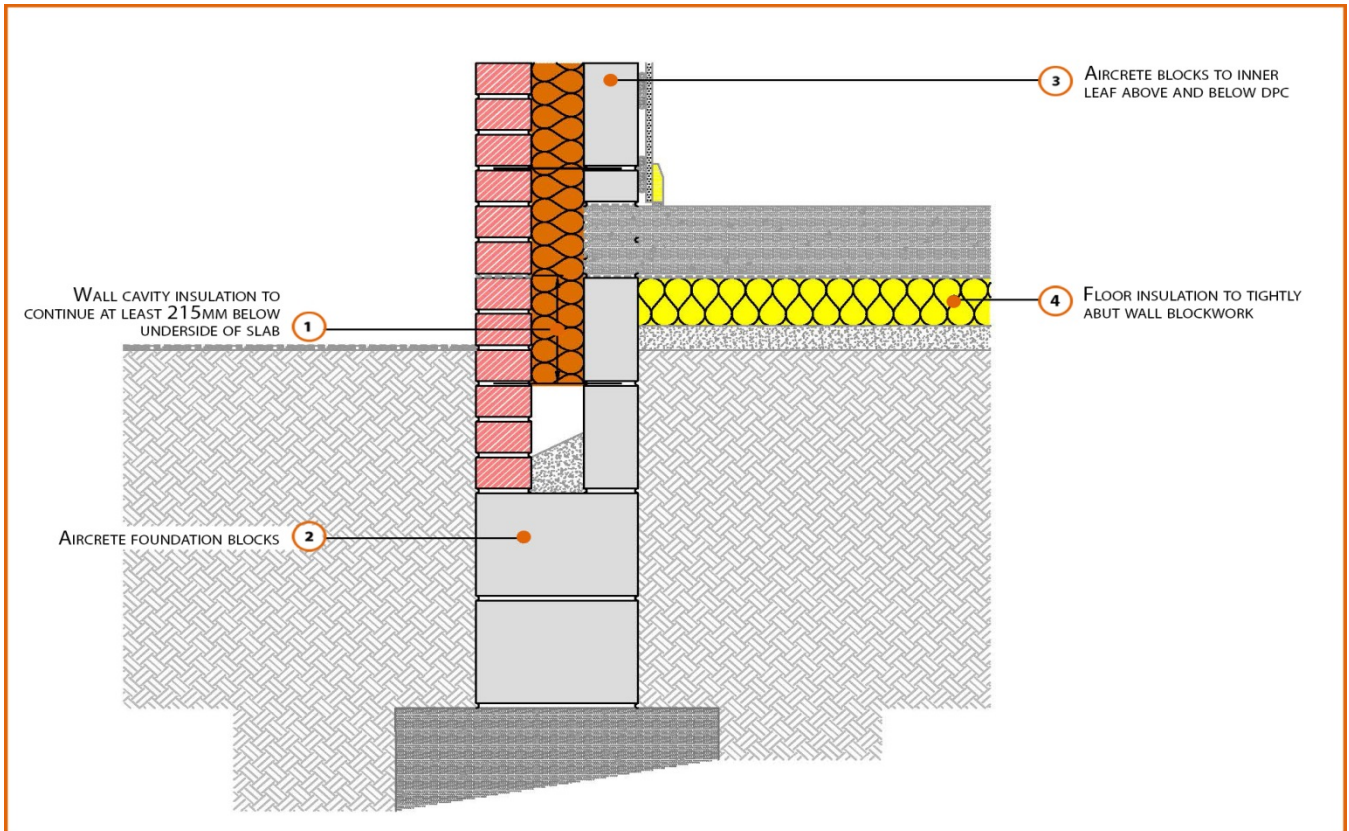


LABC Registered Construction Details

Masonry



Registration Number: E5MCFF30



Build Up

External Masonry Cavity Wall

Masonry Outer Leaf ($\lambda = 0.77$)

100mm Aircrete Block Inner Leaf ($\lambda = 0.19 \text{ W/mK}$)

Full Fill Insulation

150mm Cast In-Situ Suspended Slab

100mm Insulation Below Slab (0.022 W/mK)



Calculated ψ -values

Cavity Insulation	Inner leaf blockwork
	Aircrete Block $\lambda = 0.19$ W/mK
	ψ -value W/mK
100mm $\lambda=0.037$	0.154
150mm $\lambda=0.037$	0.135
100mm $\lambda=0.032$	0.147
150mm $\lambda=0.032$	0.130

Points to Watch

- Ensure cavities are kept clean of mortar snots and other debris during construction
- Damp proof membrane / air barrier should be lapped to damp proof course and plaster stop bead.
- Any service penetrations through the damp proof membrane / air barrier should be suitably sealed.
- The wall insulation installed must be considered fit for purpose below the wall dpc in relation to water absorption.