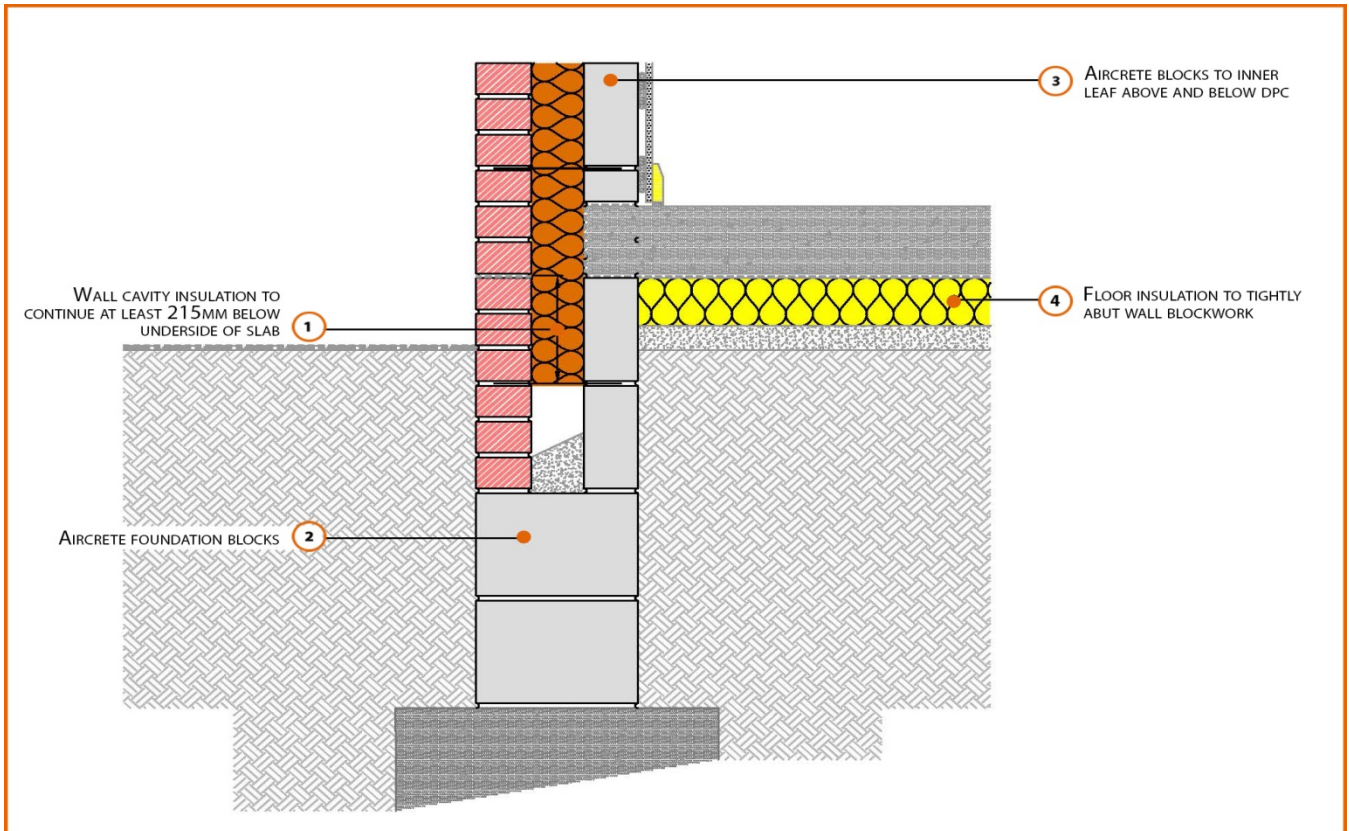


# LABC Registered Construction Details

## Masonry



Registration Number: E5MCFF32



### Build Up

External Masonry Cavity Wall

Masonry Outer Leaf ( $\lambda = 0.77$ )

100mm Aircrete Block Inner Leaf ( $\lambda = 0.15 \text{ W/mK}$ )

Full Fill Insulation

150mm Cast In-Situ Suspended Slab

150mm Insulation Below Slab ( $0.022 \text{ W/mK}$ )



## Calculated $\psi$ -values

| Cavity Insulation     | Inner leaf blockwork                 |
|-----------------------|--------------------------------------|
|                       | Aircrete Block $\lambda = 0.15$ W/mK |
|                       | $\psi$ -value W/mK                   |
| 100mm $\lambda=0.037$ | 0.137                                |
| 150mm $\lambda=0.037$ | 0.118                                |
| 100mm $\lambda=0.032$ | 0.130                                |
| 150mm $\lambda=0.032$ | 0.113                                |

## Points to Watch

- Ensure cavities are kept clean of mortar snots and other debris during construction
- Damp proof membrane / air barrier should be lapped to damp proof course and plaster stop bead.
- Any service penetrations through the damp proof membrane / air barrier should be suitably sealed.
- The wall insulation installed must be considered fit for purpose below the wall dpc in relation to water absorption.