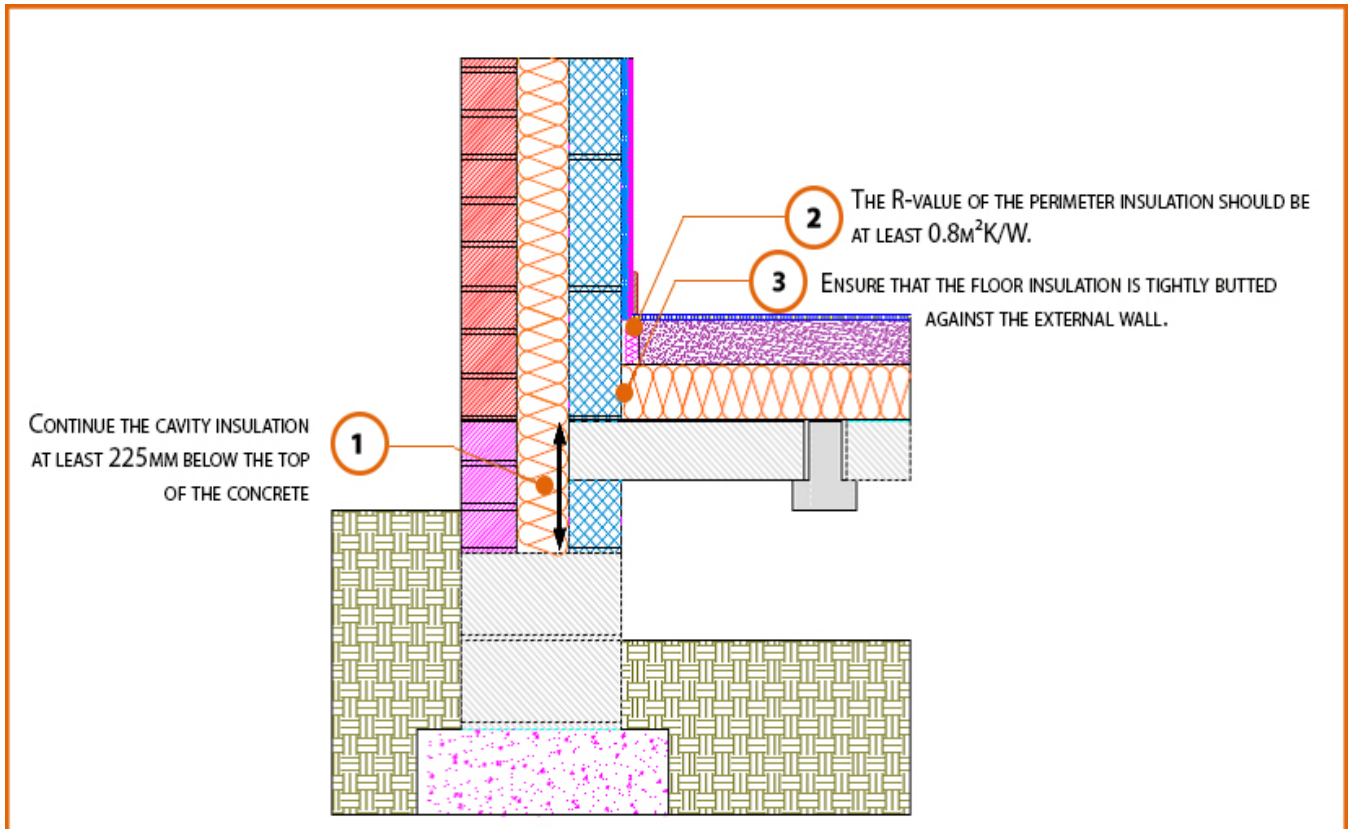


### Registration Number: E5MCFF5



#### Build Up

External Masonry Cavity Wall

Masonry Outer Leaf ( $\lambda = 0.77$ )

Lightweight Concrete Block  $\lambda \leq 0.60 \text{ W/mK}$

Beam and Block Floor

Dense Floor Block

100mm Insulation Below Screed ( $0.022\text{W/Mk}$ )

## Calculated $\psi$ -values

Cavity Insulation	Inner leaf blockwork
	Lightweight Concrete Block $\lambda \leq 0.60$ W/mK
	$\psi$ -value W/mK
100mm $\lambda=0.037$	0.096
100mm $\lambda=0.032$	0.098
150mm $\lambda=0.037$	0.100
150mm $\lambda=0.032$	0.101

## Points to Watch

- Ensure cavities are kept clean of mortar snots and other debris during construction
- Damp proof membrane / air barrier should be lapped to damp proof course and plaster stop bead.
- Any service penetrations through the damp proof membrane / air barrier should be suitably sealed.
- Sub floor ventilation to be in accordance with manufacturers recommendations. A cavity barrier type sleeve should be used through the cavity.
- The wall insulation installed must be considered fit for purpose below the wall dpc in relation to water absorption.