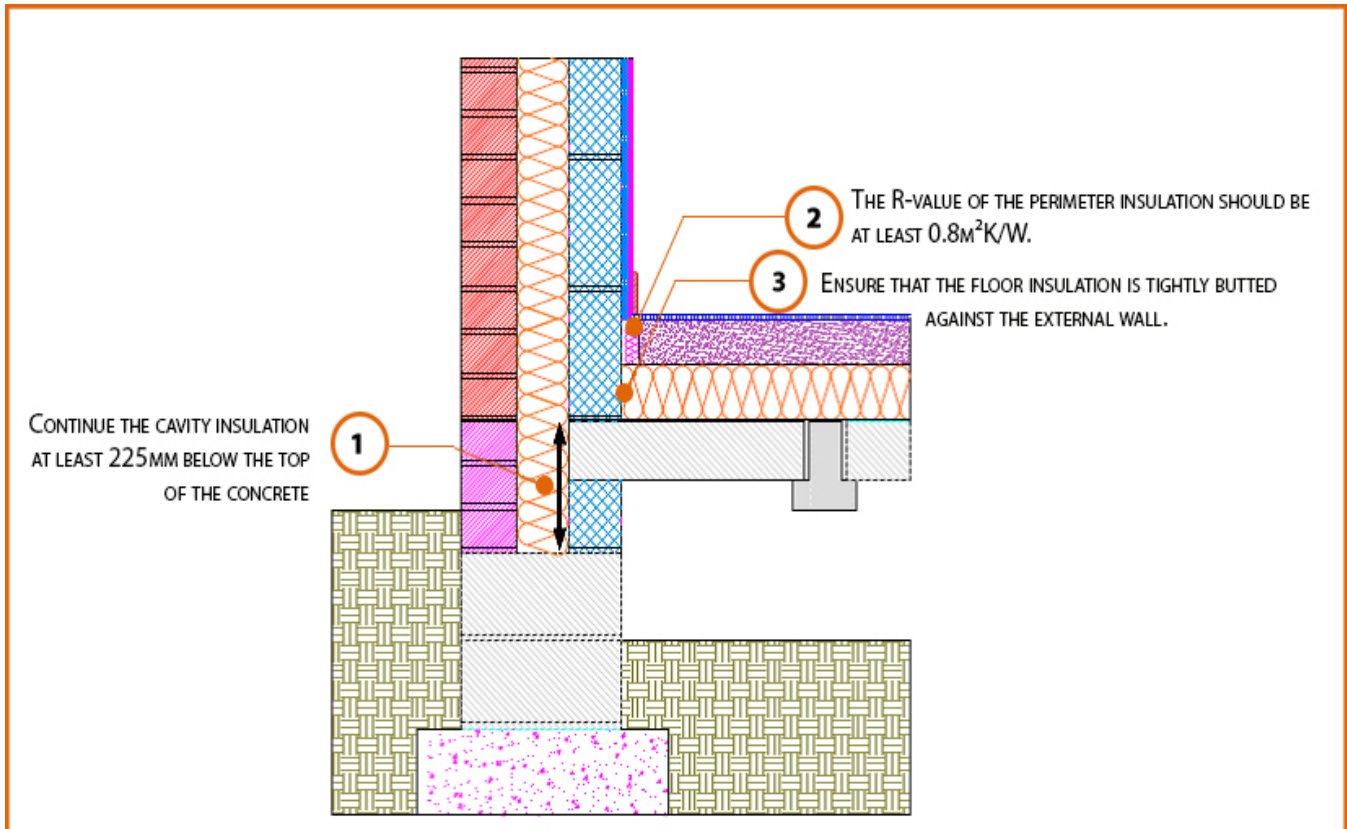


LABC Registered Construction Details Masonry



Registration Number: E5MCFF9



Build Up

External Masonry Cavity Wall

Masonry Outer Leaf ($\lambda = 0.77$)

Dense Concrete Block $\lambda \leq 1.33 \text{ W/mK}$

Beam and Block Floor

Lightweight Floor Block

150mm Insulation Below Screed (0.022W/Mk)



Calculated ψ -values

| | Inner leaf blockwork |
|-----------------------|--|
| | Dense Concrete Block $\lambda \leq 1.33$ W/mK |
| Cavity Insulation | ψ -value W/mK |
| 100mm $\lambda=0.037$ | 0.155 |
| 100mm $\lambda=0.032$ | 0.156 |
| 150mm $\lambda=0.037$ | 0.159 |
| 150mm $\lambda=0.032$ | 0.160 |

Points to Watch

- Ensure cavities are kept clean of mortar snots and other debris during construction
- Damp proof membrane / air barrier should be lapped to damp proof course and plaster stop bead.
- Any service penetrations through the damp proof membrane / air barrier should be suitably sealed.
- Sub floor ventilation to be in accordance with manufacturers recommendations. A cavity barrier type sleeve should be used through the cavity.
- The wall insulation installed must be considered fit for purpose below the wall dpc in relation to water absorption.